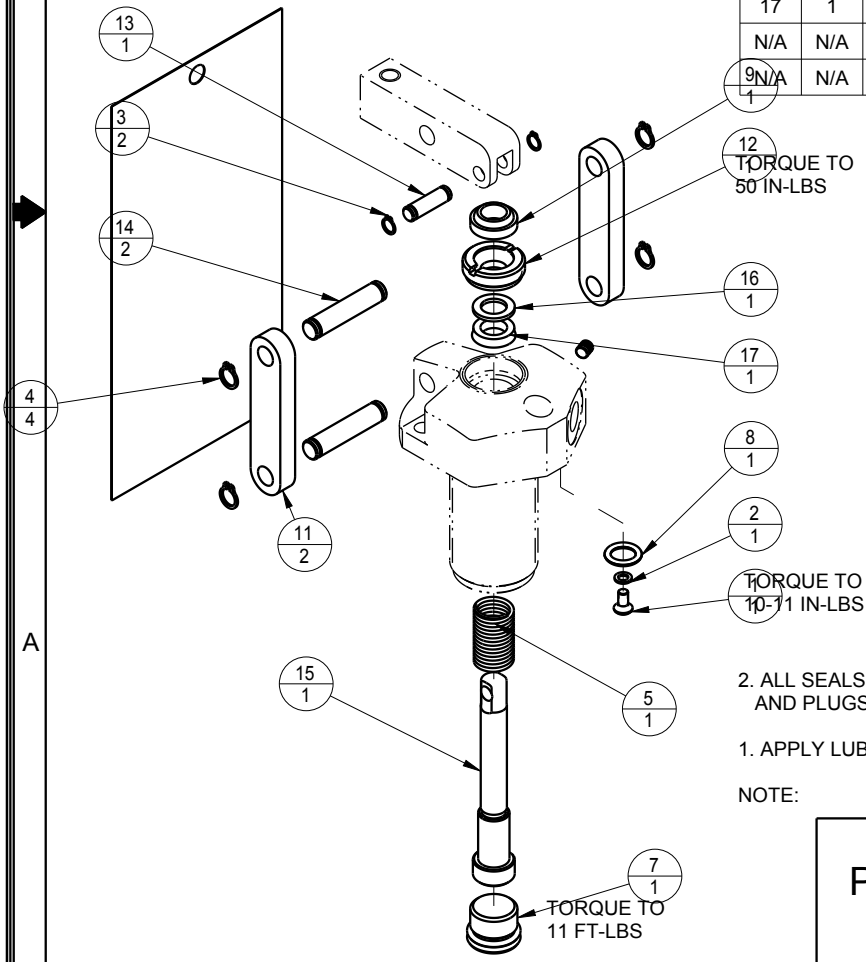



MODEL NO.			MODEL NAME
16610400			ASSY, LC, SA, 350
NO.	QTY	PART NO.	DESCRIPTION
1	1	21500019	SCREW, CAP, BTNH, M3 X 6, ALY
2	1	21500200	WASHER
3	2	23050020	RING, RTNG, EXT, 0.188
4	4	23050021	RING, RTNG, EXT, 0.250
5	1	23350048	SPRING, COMPRESSION
6	1	27412006	PLUG, SEALING, 4mm
7	1	30670008	PLUG, SAE 6, FKM
8	1	39051025	O-RING, (-011)
9	1	39053025	WIPER, SNAP-IN, (5/16)
10	1	67040065	TAG, LINK ASSY, LC
11	2	81600021	LINK, LC, 450 lb
12	1	81600036	RETAINER, LC, 450
13	1	81600076	PIN, LC, SHORT, 450
14	2	81600081	PIN, LC, LONG, 450
15	1	81600112	PLUNGER, LC, SA, 350/1.5 KN
16	1	39F54005	BU RING, (-109)
17	1	39V52031	SEAL, BEVEL, 5/16 x 3/32 x 1/2
N/A	N/A	60160011	KIT, SEAL, LC, SA, 350
N/A	N/A	6V160011	KIT, SEAL, LC, SA, 350, FKM



2. ALL SEALS, BU RINGS, RETAINING RINGS, O-RINGS, AND PLUGS ARE INCLUDED IN THE SEAL KIT.
 1. APPLY LUBRICANT TO ALL SEALS PRIOR TO ASSEMBLY.

NOTE:

PARTS LIST	 VEKTEK, INC. 1334 E. SIXTH AVE. P.O. BOX 625 EMPORIA, KS. 66801 U.S.A.	
	ASSEMBLIES AFFECTED	PARTS LIST, LC, SA, 350
16610400	SIZE A	PL1606
		REV B

B	1725	RELEASE	JDW	6-26-07
REV	IN ACCORDANCE WITH ECN	EFFECTIVE DATE	REVISED BY	DATE
DRW BY: K. ROEMER	DRAWING STATUS: Released			
DATE: 06-23-06	PRODUCTION APPROVED FOR RELEASED STATUS ONLY			

SHEET 1 OF 1