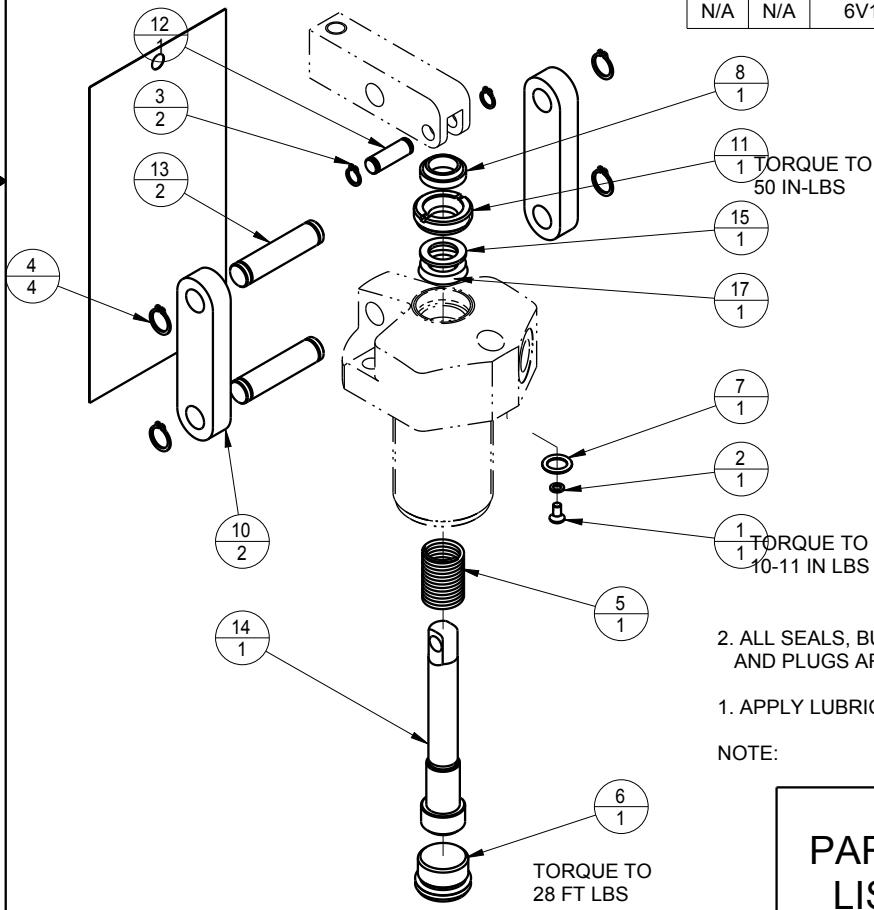



MODEL NO.			MODEL NAME
16610600			ASSY, LC, SA, 700
NO.	QTY	PART NO.	DESCRIPTION
1	1	21500019	SCREW, CAP, BTNH, M3 X 6, ALY
2	1	21500200	WASHER
3	2	23050021	RING, RTNG, EXT, 0.250
4	4	23050022	RING, RTNG, EXT, 0.375
5	1	23350049	SPRING, COMPRESSION
6	1	30670002	PLUG, SAE 8, FKM
7	1	39051025	O-RING, (-011)
8	1	39053026	WIPER, SNAP-IN, (7/16)
9	1	67040065	TAG, LINK ASSY, LC
10	2	81600022	LINK, LC, 1100 lb
11	1	81600037	RETAINER, LC, 1100
12	1	81600077	PIN, LC, SHORT, 1100
13	2	81600082	PIN, LC, LONG, 1100
14	1	81600113	PLUNGER, LC, SA, 700/3 KN
15	1	39F54006	BU RING, (-205)
17	1	39V52032	SEAL, BEVEL, 7/16 x 1/8 x 11/16
N/A	N/A	60160012	KIT, SEAL, LC, SA, 700
N/A	N/A	6V160012	KIT, SEAL, LC, SA, 700, FKM



2. ALL SEALS, BU RINGS, RETAINING RINGS, O-RINGS, AND PLUGS ARE INCLUDED IN THE SEAL KIT.

1. APPLY LUBRICANT TO ALL SEALS PRIOR TO ASSEMBLY.

NOTE:

<b>PARTS LIST</b>		
	<small>VEKTEK, INC. 1334 E. SIXTH AVE. P.O. BOX 625 EMPORIA, KS. 66801 U.S.A.</small>	
ASSEMBLIES AFFECTED	PARTS LIST, LC, SA, 700	
16610600	SIZE <b>A</b>	REV <b>B</b>
<b>PL1607</b>		

B	1725	RELEASE	JDW	6-26-07
REV	IN ACCORDANCE WITH ECN	EFFECTIVE DATE	REVISED BY	DATE
DRW BY: K. ROEMER	DRAWING STATUS: <b>Released</b>			
DATE: 07/30/04	PRODUCTION APPROVED FOR RELEASED STATUS ONLY			