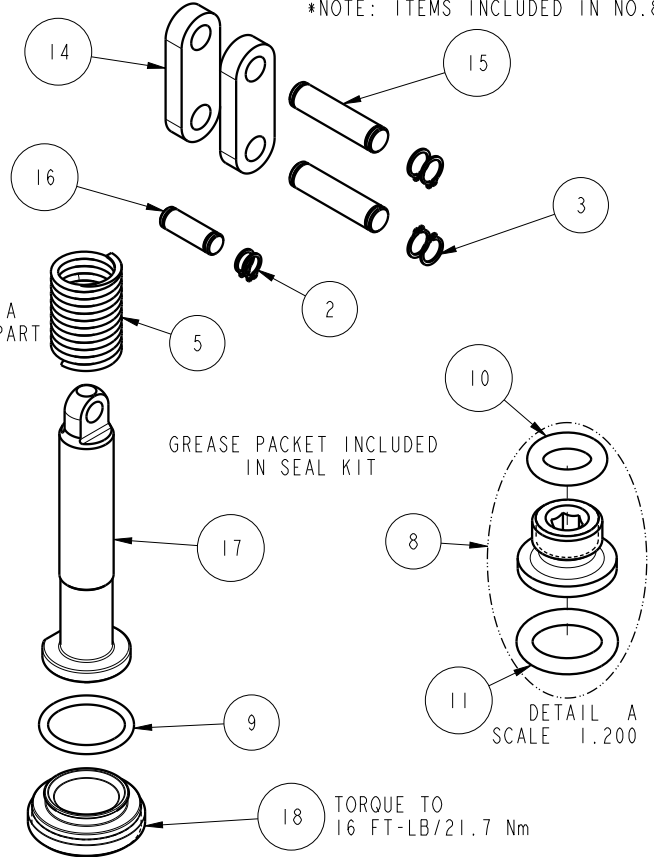
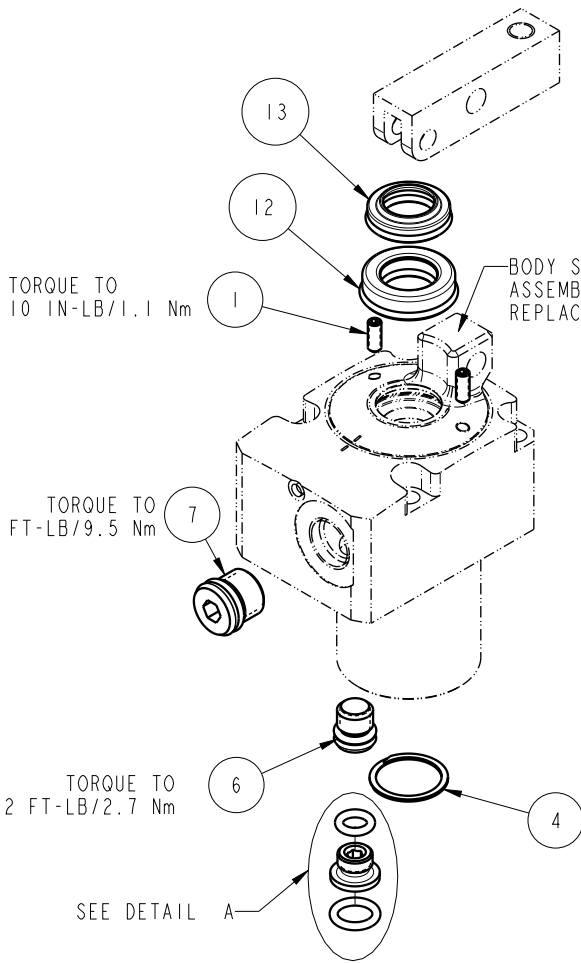


NO	QTY	PART NO	DESCRIPTION	STD SEAL KIT
1	2	21500316	SCREW, SET, CUP PT, M3 X .5 X 8	
2	2	23050031	RING, RTNG, EXT, 0.197	X
3	4	23050032	RING, RTNG, EXT, 0.236	X
4	1	23050052	RETAINING RING, SPIRAL, INTL	X
5	1	23350128	SPRING, COMPRESSION	
6	1	30601122	PLUG, SOCH, SAE 2	
7	1	30601144	PLUG, SOCH, SAE 4	
8	1	30871120	ASSY, ADAPTER, SC, TF, MM	X
9	1	39000064	O-RING, (17mm x 2)	X
10	1	39050036	O-RING, (-009)	X*
11	1	39050042	O-RING, (-011)	X*
12	1	39052064	SEAL, ROD, RSB, 12, 85A, AU	X
13	1	39053040	SEAL, WIPER, SNAP IN, WED, 12, 94A, AU	X
14	2	81600145	LINK, LC, 7MP α , 25B	
15	2	81600150	PIN, LINK, LC, 7MP α , 25B	
16	1	81600155	PIN, PLUNGER, LC, 7MP α , 25B	
17	1	81600260	PLUNGER, LC, TL360, SA, 600/2.73kN	
18	1	81600270	CAP, LC, TL360, 600/2.73kN	
N/A	N/A	60160100	KIT, SEAL, ASSY, LC, TL360, SA, 6001b	NOTED

*NOTE: ITEMS INCLUDED IN NO. 8



PARTS LIST



VEKTEK, INC.
1334 E. SIXTH AVE. P.O. BOX 625
EMPORIA, KS. 66801 U.S.A.

ASSEMBLIES AFFECTED
16-3112-00

PARTS LIST, ASSY, LC, TL360, SA, 6001b

ROTARY LUG

SIZE
A PL1614

REV
C

C	5201	RELEASE	ALS	11/10/23
REV	IN ACCORDANCE WITH ECN	EFFECTIVE DATE	REVISED BY	DATE
DRW BY:	BCD	DRAWING STATUS: Released		
DATE:	7/20/16	PRODUCTION APPROVED FOR RELEASED STATUS ONLY		