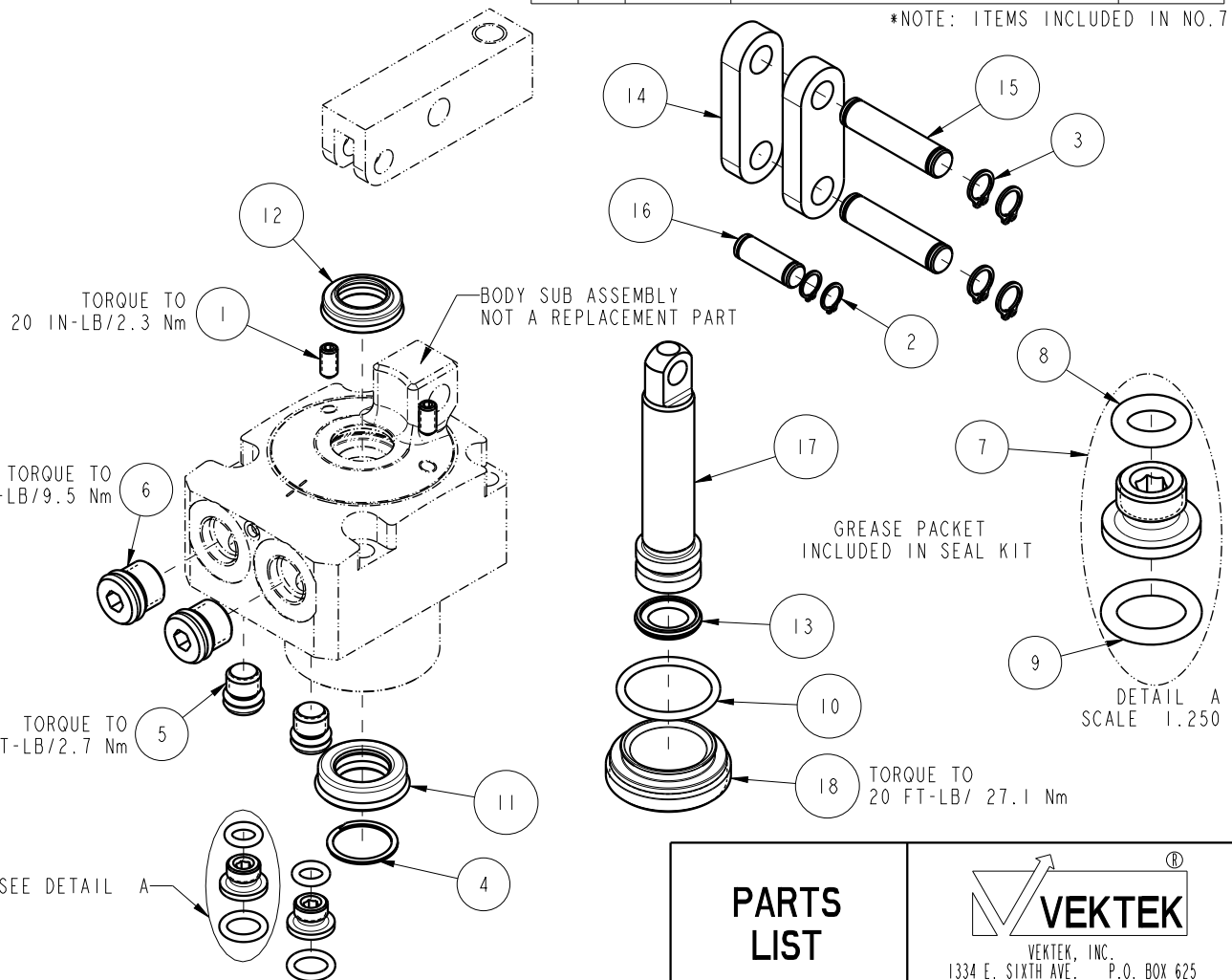


NO	QTY	PART NO	DESCRIPTION	STD SEAL KIT
1	2	21500317	SCREW, SET, CUP PT, M4 X .7 X 8	
2	2	23050032	RING, RTNG, EXT, 0.236	X
3	4	23050033	RING, RTNG, EXT, 0.276	X
4	1	23050050	RETAINING RING, SPIRAL, INTL	X
5	2	30601122	PLUG, SOCH, SAE 2	
6	2	30601144	PLUG, SOCH, SAE 4	
7	2	30871120	ASSY, ADAPTER, SC, TF, MM	X
8	2	39050036	O-RING, (-009)	X*
9	2	39050042	O-RING, (-011)	X*
10	1	39051149	O-RING, (20mm X 2)	X
11	1	39052059	SEAL, ROD, RSD, 12, 85A, AU	X
12	1	39053040	SEAL, WIPER, SNAP IN, WED, 12, 94A, AU	X
13	1	39056031	SEAL, CAP, PISTON, 15, 94A, AU	X
14	2	81600146	LINK, LC, 7MPa, 32B	
15	2	81600151	PIN, LINK, LC, 7MPa, 32B	
16	1	81600156	PIN, PLUNGER, LC, 7MPa, 32B	
17	1	81600251	PLUNGER, LC, TL360, DA, 1000/4.36kN	
18	1	81600271	CAP, LC, TL360, 1000/4.36kN	
N/A	N/A	60160201	KIT, SEAL, ASSY, LC, TL360, DA, 10001b	NOTED

*NOTE: ITEMS INCLUDED IN NO. 7



PARTS LIST		
	VEKTEK, INC. 1334 E. SIXTH AVE. P.O. BOX 625 EMPORIA, KS. 66801 U.S.A.	
ASSEMBLIES AFFECTED	PARTS LIST, ASSY, LC, TL360, DA, 10001b	
16-3215-00	ROTARY LUG	
SIZE A	PL1620	REV C

C	5103	RELEASE	ALS	5/24/23
REV	IN ACCORDANCE WITH ECN	EFFECTIVE DATE	REVISED BY	DATE
DRW BY: BCD	DRAWING STATUS: Released PRODUCTION APPROVED FOR RELEASED STATUS ONLY			
DATE: 07-15-16				

SHEET 1 OF 1