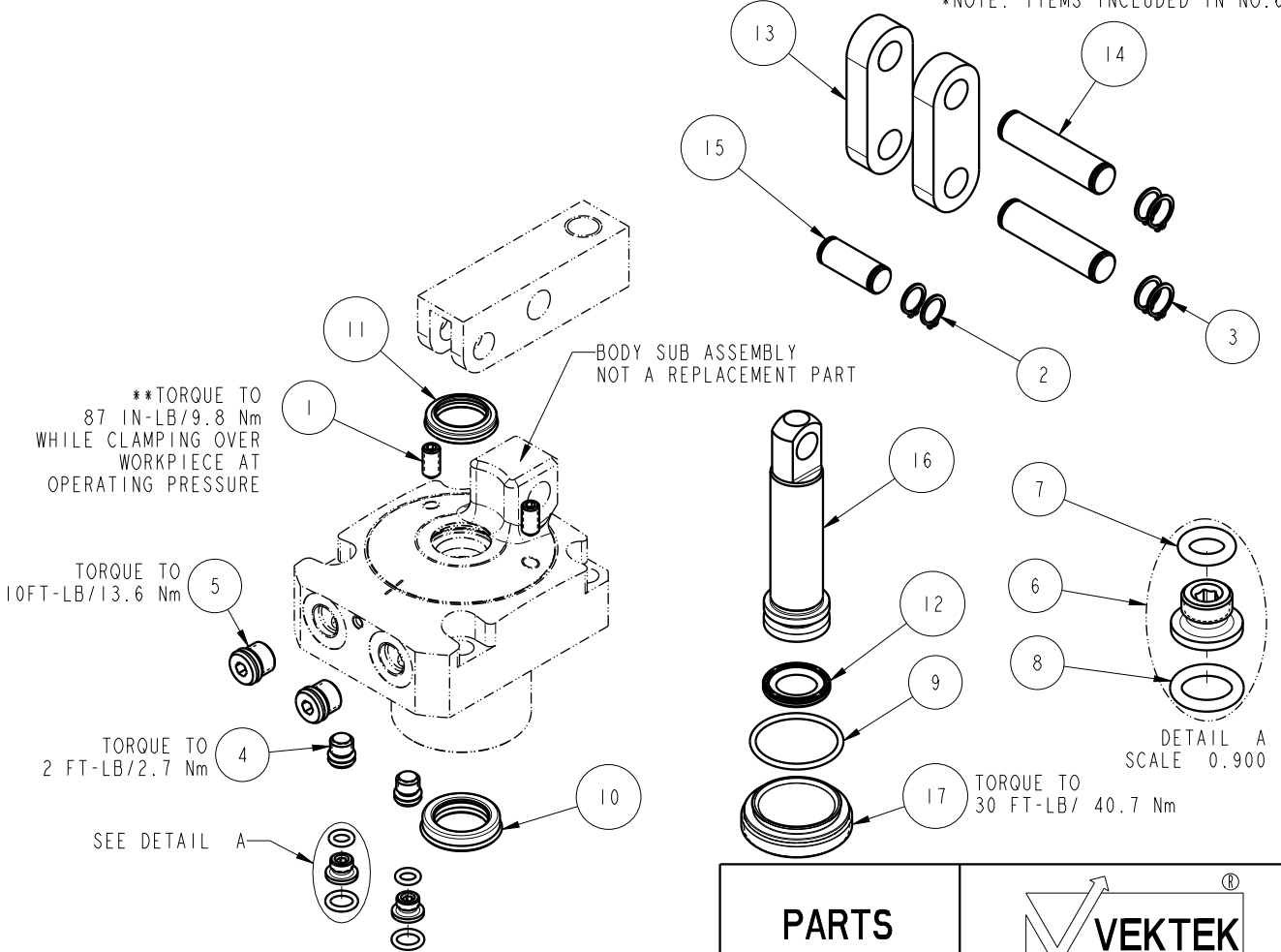


| NO  | QTY | PART NO  | DESCRIPTION                            | STD SEAL KIT |
|-----|-----|----------|----------------------------------------|--------------|
| 1   | 2   | 21500319 | SCREW, SET, CUP PT, M6 X 1 X 12        |              |
| 2   | 2   | 23050036 | RING, RTNG, EXT, 0.394                 | X            |
| 3   | 4   | 23050037 | RING, RTNG, EXT, 0.438                 | X            |
| 4   | 2   | 30601122 | PLUG, SOCH, SAE 2                      |              |
| 5   | 2   | 30601144 | PLUG, SOCH, SAE 4                      |              |
| 6   | 2   | 30871120 | ASSY, ADAPTER, SC, TF, MM              | X            |
| 7   | 2   | 39050036 | O-RING, (-009)                         | X*           |
| 8   | 2   | 39050042 | O-RING, (-011)                         | X*           |
| 9   | 1   | 39051151 | O-RING, (28mm X 2)                     | X            |
| 10  | 1   | 39052061 | SEAL, ROD, RSD, 18, 85A, AU            | X            |
| 11  | 1   | 39053042 | SEAL, WIPER, SNAP IN, WED, 18, 94A, AU | X            |
| 12  | 1   | 39056033 | SEAL, CAP, PISTON, 22.5, 94A, AU       | X            |
| 13  | 2   | 81600148 | LINK, LC, 7MPa, 50B                    |              |
| 14  | 2   | 81600153 | PIN, LINK, LC, 7MPa, 50B               |              |
| 15  | 1   | 81600158 | PIN, PLUNGER, LC, 7MPa, 50B            |              |
| 16  | 1   | 81600253 | PLUNGER, LC, TL360, DA, 2400/10.4kN    |              |
| 17  | 1   | 81600273 | CAP, LC, TL360, 2400/10.4kN            |              |
| N/A | N/A | 60160203 | KIT, SEAL, ASSY, LC, TL360, DA, 24001b | NOTED        |

\*NOTE: ITEMS INCLUDED IN NO. 6



\*\*NOTE: LINK CLAMP 16-3222-00 REVISIONS C OR EARLIER USE SET SCREW 21440045

|                                   |                                                                              |          |
|-----------------------------------|------------------------------------------------------------------------------|----------|
| <b>PARTS LIST</b>                 |                                                                              |          |
|                                   | VEKTEK, INC.<br>1334 E. SIXTH AVE. P.O. BOX 625<br>EMPORIA, KS. 66801 U.S.A. |          |
| ASSEMBLIES AFFECTED<br>16-3222-00 | PARTS LIST, ASSY, LC, TL360, DA, 24001b                                      |          |
|                                   | ROTARY LUG                                                                   |          |
| SIZE<br>A                         | PL1622                                                                       | REV<br>C |

|         |                        |                                              |            |         |
|---------|------------------------|----------------------------------------------|------------|---------|
| C       | 5081                   | RELEASE                                      | ALS        | 4/20/23 |
| REV     | IN ACCORDANCE WITH ECN | EFFECTIVE DATE                               | REVISED BY | DATE    |
| DRW BY: | BCD                    | <b>DRAWING STATUS: Released</b>              |            |         |
| DATE:   | 07-15-16               | PRODUCTION APPROVED FOR RELEASED STATUS ONLY |            |         |