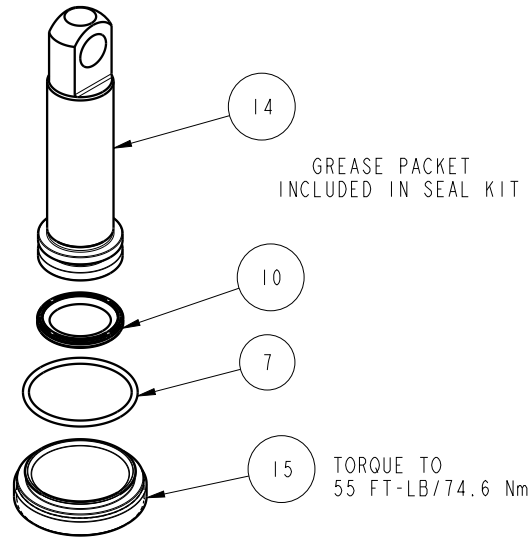
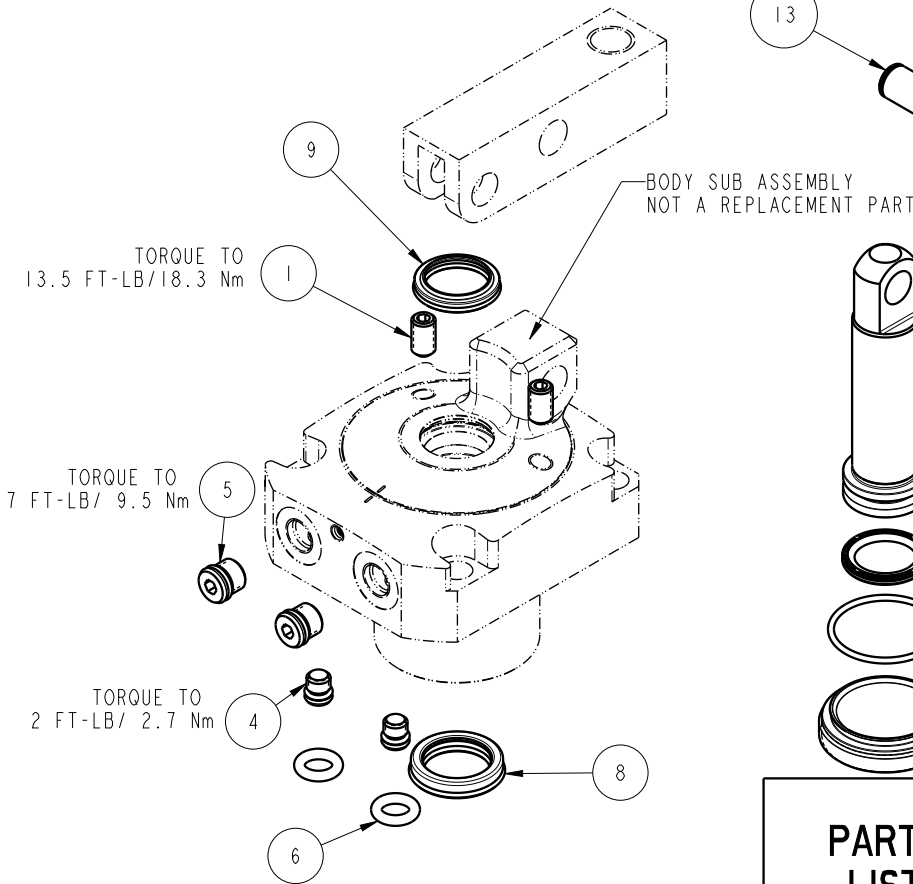
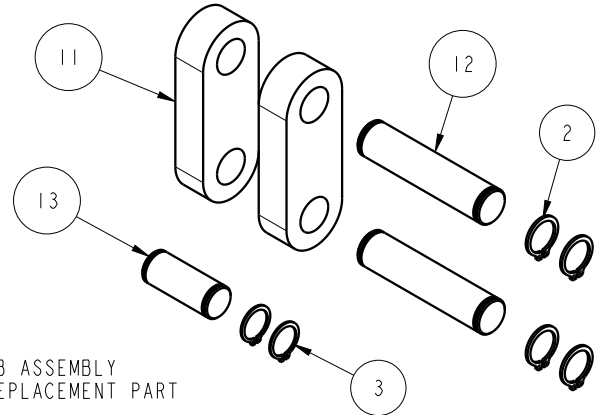


NO	QTY	PART NO	DESCRIPTION	STD SEAL KIT
1	2	21500320	SCREW, SET, CUP PT, M8 X 1.25 X 14	
2	4	23050023	RING, RTNG, EXT, 0.500	X
3	2	23050038	RING, RTNG, EXT, 0.469	X
4	2	30601122	PLUG, SOCH, SAE 2	
5	2	30601144	PLUG, SOCH, SAE 4	
6	2	39000050	O-RING, (-204)	X
7	1	39051152	O-RING, (34mm X 2)	X
8	1	39052062	SEAL, ROD, RSD, 22, 85A, AU	X
9	1	39053043	SEAL, WIPER, SNAP IN, WED, 22, 94A, AU	X
10	1	39056034	SEAL, CAP, PISTON, 28, 94A, AU	X
11	2	81600149	LINK, LC, 7MPa, 63B	
12	2	81600154	PIN, LINK, LC, 7MPa, 63B	
13	1	81600159	PIN, PLUNGER, LC, 7MPa, 63B	
14	1	81600254	PLUNGER, LC, TL360, DA, 3600/15.9kN	
15	1	81600274	CAP, LC, TL360, 3600/15.9kN	
N/A	N/A	60160204	KIT, SEAL, ASSY, LC, TL360, DA, 36001b	NOTED



PARTS LIST



VEKTEK, INC.
1334 E. SIXTH AVE. P.O. BOX 625
EMPORIA, KS. 66801 U.S.A.

B	5178	RELEASE	ALS	3/16/23
REV	IN ACCORDANCE WITH ECN	EFFECTIVE DATE	REVISED BY	DATE
DRW BY:	BCD	DRAWING STATUS: Released		
DATE:	07-15-16	PRODUCTION APPROVED FOR RELEASED STATUS ONLY		

ASSEMBLIES AFFECTED

16-3228-00

PARTS LIST, ASSY, LC, TL360, DA, 36001b

ROTARY LUG

SIZE
A

PL1623

REV
B

FORM FEG035_PL_ASIZE, REV. B

SHEET 1 OF 1