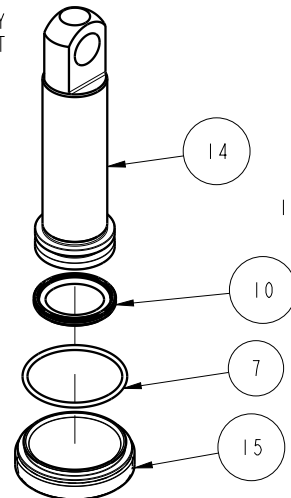
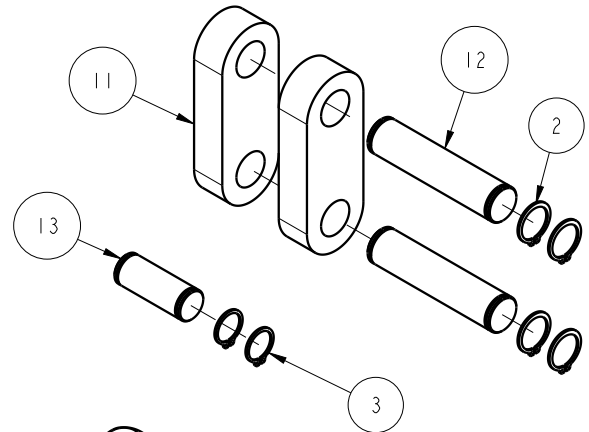


NO	QTY	PART NO	DESCRIPTION	STD SEAL KIT
1	2	21440047	SHSS, CUP POINT, 3/8-24 X 5/8	
2	4	23050024	RING, RTNG, EXT, 0.625	X
3	2	23050048	RING, RTNG, EXT, 0.551	X
4	2	30601122	PLUG, SOCH, SAE 2	
5	2	30601144	PLUG, SOCH, SAE 4	
6	2	39000050	O-RING, (-204)	X
7	1	39051153	O-RING, (38mm X 2)	X
8	1	39052063	SEAL, ROD, RSD, 26, 85A, AU	X
9	1	39053044	SEAL, WIPER, SNAP IN, WED, 26, 94A, AU	X
10	1	39056012	SEAL, CAP, PISTON, 32, 94A, AU	X
11	2	81600171	LINK, LC, TL360, 5000/22.3kN	
12	2	81600172	PIN, LINK, LC, TL360, 5000/22.3kN	
13	1	81600173	PIN, PLUNGER, LC, TL360, 5000/22.3kN	
14	1	81600255	PLUNGER, LC, TL360, DA, 5000/22.3kN	
15	1	81600275	CAP, LC, TL360, 5000/22.3kN	
N/A	N/A	60160205	KIT, SEAL, ASSY, LC, TL360, DA, 50001b	NOTED



TORQUE TO 24 FT-LB/ 33 Nm WHILE CLAMPING OVER WORKPIECE AT OPERATING PRESSURE

BODY SUB ASSEMBLY NOT A REPLACEMENT PART

TORQUE TO 7 FT-LB/ 9.5 Nm

GREASE PACKET INCLUDED IN SEAL KIT

TORQUE TO 2 FT-LB/ 2.7 Nm

TORQUE TO 75 FT-LB/ 101.7 Nm

### PARTS LIST



VEKTEK, INC.  
1334 E. SIXTH AVE. P.O. BOX 625  
EMPORIA, KS. 66801 U.S.A.

ASSEMBLIES AFFECTED  
16-3232-00

PARTS LIST, ASSY, LC, TL360, DA, 50001b

ROTARY LUG

SIZE A PL1624

REV A

A	3076	RELEASE	BCD	08/22/16
REV	IN ACCORDANCE WITH ECN	EFFECTIVE DATE	REVISED BY	DATE
DRW BY:	BCD	<b>DRAWING STATUS: Released</b>		
DATE:	07-15-16	PRODUCTION APPROVED FOR RELEASED STATUS ONLY		