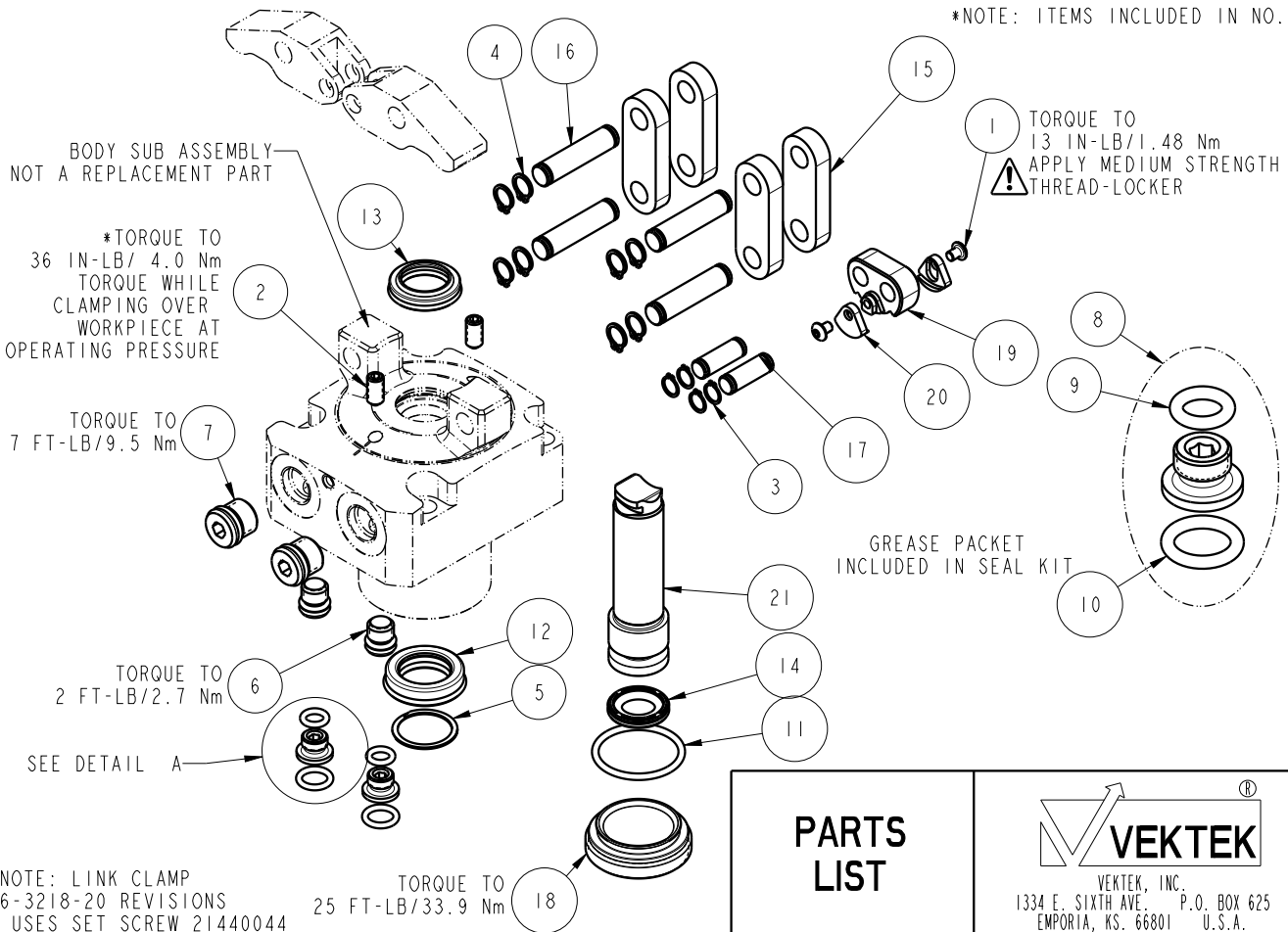


NO	QTY	PART NO	DESCRIPTION	STD SEAL KIT
1	2	21500051	SCREW, CAP, BTNH, M3 X 4, SSTL	
2	2	21500318	SCREW, SET, CUP PT, M5 X .8 X 10	
3	4	23050032	RING, RTNG, EXT, 0.236	X
4	8	23050033	RING, RTNG, EXT, 0.276	X
5	1	23050051	RETAINING RING, SPIRAL, INTL	X
6	2	30601122	PLUG, SOCH, SAE 2	
7	2	30601144	PLUG, SOCH, SAE 4	
8	2	30871120	ASSY, ADAPTER, SC, TF, MM	X
9	2	39050036	O-RING, (-009)	X*
10	2	39050042	O-RING, (-011)	X*
11	1	39051150	O-RING, (24mm X 2)	X
12	1	39052060	SEAL, ROD, RSD, 15, 85A, AU	X
13	1	39053041	SEAL, WIPER, SNAP IN, WED, 15, 94A, AU	X
14	1	39056032	SEAL, CAP, PISTON, 18, 94A, AU	X
15	4	81600146	LINK, LC, 7MPa, 32B	
16	4	81600151	PIN, LINK, LC, 7MPa, 32B	
17	2	81600156	PIN, PLUNGER, LC, 7MPa, 32B	
18	1	81600272	CAP, LC, TL360, 1400/6.22kN	
19	1	81600281	PIVOT, TL360-TWIN, 1700 LB	
20	2	81600284	COVER, PIVOT, TL360-TWIN, 1700 LB	
21	1	81600293	PLUNGER, TL360-TWIN, 1700 LB	
N/A	N/A	60160207	KIT, SEAL, ASSY, LC, TL360-TWIN, DA, 1700LB	NOTED

\*NOTE: ITEMS INCLUDED IN NO.8



\*NOTE: LINK CLAMP  
16-3218-20 REVISIONS  
A USES SET SCREW 21440044

### PARTS LIST



VEKTEK, INC.  
1334 E. SIXTH AVE. P.O. BOX 625  
EMPORIA, KS. 66801 U.S.A.

ASSEMBLIES AFFECTED  
16-3218-20

PARTS LIST, ASSY, LC, TL360-TWIN, DA, 1700lb

ROTARY LUG

SIZE  
A

PL1627

REV  
B

B	5051	RELEASE	ALS	2/28/23
REV	IN ACCORDANCE WITH ECN	EFFECTIVE DATE	REVISED BY	DATE
DRW BY:	A. THOMSEN	DRAWING STATUS: <b>Released</b>		
DATE:	05-MAY-2020	PRODUCTION APPROVED FOR RELEASED STATUS ONLY		

FORM FEG035\_PL\_ASIZE, REV. B

SHEET 1 OF 1