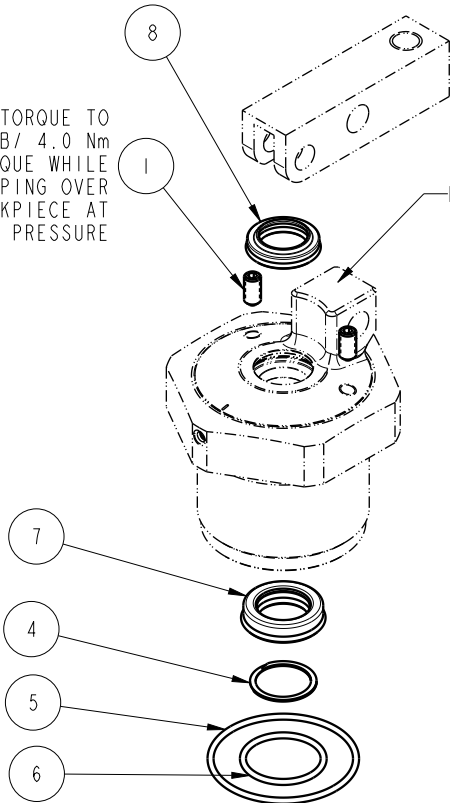
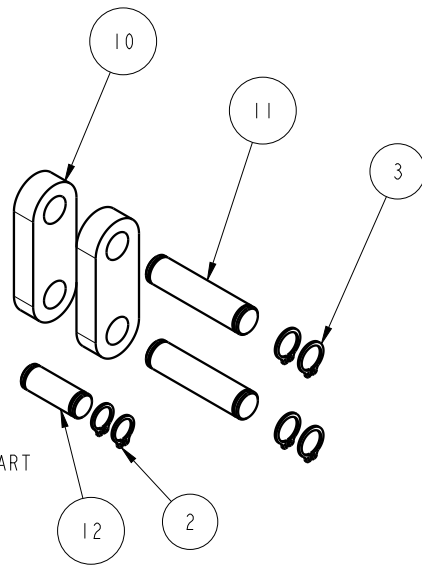


NO	QTY	PART NO	DESCRIPTION	STD SEAL KIT
1	2	21500318	SCREW, SET, CUP PT, M5 X .8 X 10	
2	2	23050034	RING, RTNG, EXT, 0.312	X
3	4	23050035	RING, RTNG, EXT, 0.354	X
4	1	23050051	RETAINING RING, SPIRAL, INTL	X
5	1	39001021	O-RING, (-030)	X
6	1	39050033	O-RING, (-020)	X
7	1	39052060	SEAL, ROD, RSD, 15, 85A, AU	X
8	1	39053041	SEAL, WIPER, SNAP IN, WED, 15, 94A, AU	X
9	1	39056032	SEAL, CAP, PISTON, 18, 94A, AU	X
10	2	81600147	LINK, LC, 7MPa, 40B	
11	2	81600152	PIN, LINK, LC, 7MPa, 40B	
12	1	81600157	PIN, PLUNGER, LC, 7MPa, 40B	
13	1	81600252	PLUNGER, LC, TL360, DA, 1400/6.22kN	
N/A	N/A	60160210	KIT, SEAL, ASSY, LC, CM, TL360, DA, 14001b	NOTED

TORQUE TO
36 IN-LB/ 4.0 Nm
TORQUE WHILE
CLAMPING OVER
WORKPIECE AT
OPERATING PRESSURE



BODY SUB ASSEMBLY
NOT A REPLACEMENT PART



GREASE PACKET
INCLUDED IN SEAL KIT

PARTS LIST



VEKTEK, INC.
1334 E. SIXTH AVE. P.O. BOX 625
EMPORIA, KS. 66801 U.S.A.

ASSEMBLIES AFFECTED
16-4218-00

PARTS LIST, ASSY, LC, CM, TL360, DA, 14001b

ROTARY LUG

SIZE
A PL1630

REV
B

B	5217	RELEASE	ALS	12/11/23
REV	IN ACCORDANCE WITH ECN	EFFECTIVE DATE	REVISED BY	DATE
DRW BY:	A. THOMSEN	DRAWING STATUS: Released		
DATE:	05-MAY-2020	PRODUCTION APPROVED FOR RELEASED STATUS ONLY		

FORM FEG035_PL_ASIZE, REV. B

SHEET 1 OF 1