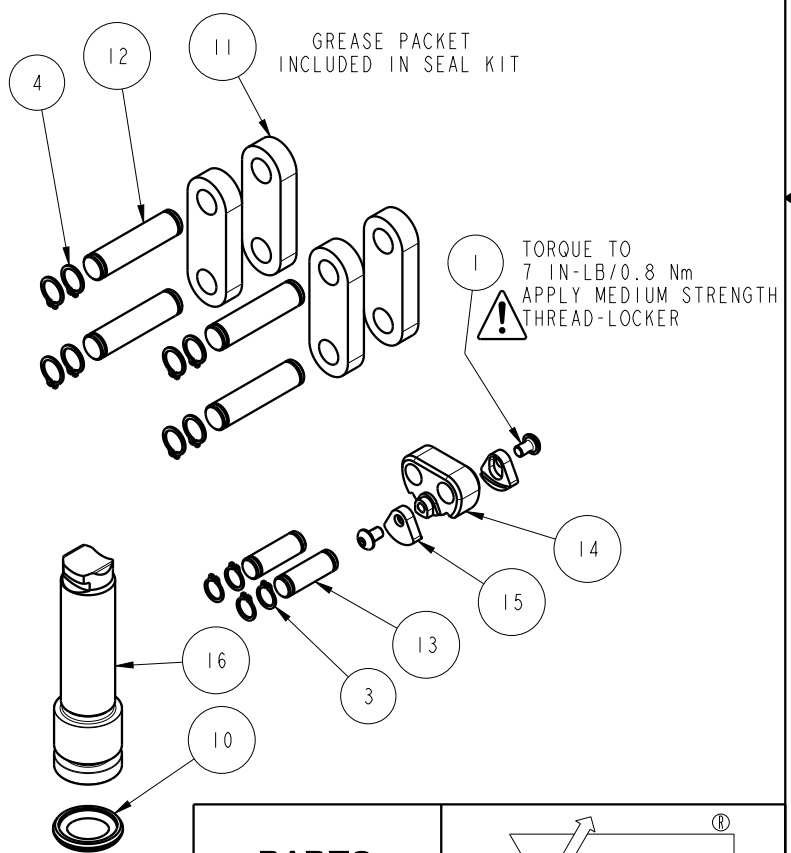
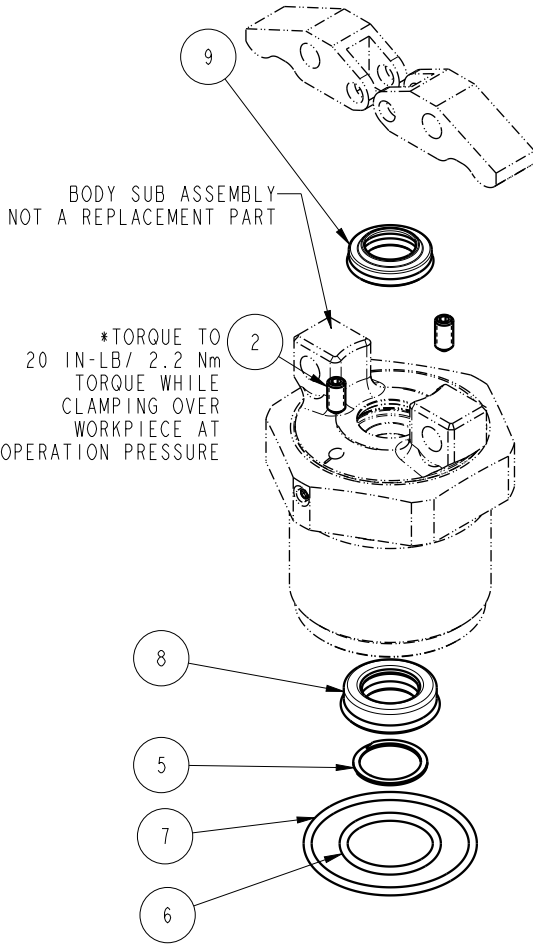


NO	QTY	PART NO	DESCRIPTION	STD SEAL KIT
1	2	21500061	SCREW, CAP, BTNH, M2.5 X 4, SSTL	
2	2	21500317	SCREW, SET, CUP PT, M4 X .7 X 8	
3	4	23050031	RING, RTNG, EXT, 0.197	X
4	8	23050032	RING, RTNG, EXT, 0.236	X
5	1	23050050	RETAINING RING, SPIRAL, INTL	X
6	1	39000021	O-RING, (-018)	X
7	1	39001051	O-RING, (-028)	X
8	1	39052059	SEAL, ROD, RSD, 12, 85A, AU	X
9	1	39053040	SEAL, WIPER, SNAP IN, WED, 12, 94A, AU	X
10	1	39056031	SEAL, CAP, PISTON, 15, 94A, AU	X
11	4	81600145	LINK, LC, 7MPa, 25B	
12	4	81600150	PIN, LINK, LC, 7MPa, 25B	
13	2	81600155	PIN, PLUNGER, LC, 7MPa, 25B	
14	1	81600280	PIVOT, TL360-TWIN, 1100 LB	
15	2	81600283	COVER, PIVOT, TL360-TWIN, 1100 LB	
16	1	81600292	PLUNGER, TL360-TWIN, 1100 LB	
N/A	N/A	60160212	KIT, SEAL, ASSY, LC, CM, TL360, DA, 11001b	NOTED

*NOTE: LINK CLAMP
16-4215-20 REVISIONS
A USES SET SCREW 21440043



PARTS LIST



VEKTEK, INC.
1334 E. SIXTH AVE. P.O. BOX 625
EMPORIA, KS. 66801 U.S.A.

ASSEMBLIES AFFECTED
16-4215-20

PARTS LIST, ASSY, LC, CM, TL360, DA, 11001b

ROTARY LUG

SIZE
A PL1632

REV
B

B	5051	RELEASE	ALS	2/28/23
REV	IN ACCORDANCE WITH ECN	EFFECTIVE DATE	REVISED BY	DATE
DRW BY:	A. THOMSEN	DRAWING STATUS: Released		
DATE:	05-MAY-2020	PRODUCTION APPROVED FOR RELEASED STATUS ONLY		

FORM FEG035_PL_ASIZE, REV. B

SHEET 1 OF 1