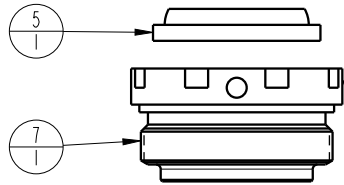
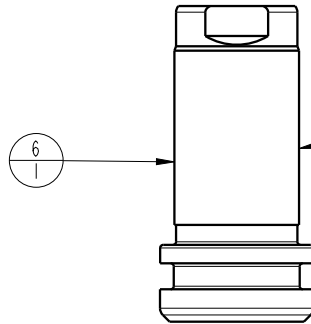


LUBRICATE ALL SEALS WITH CLEAN HYDRAULIC OIL PRIOR TO ASSEMBLY. DO NOT USE SILICONE BASED LUBRICANTS.

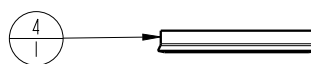


TIGHTEN TO 55 FT-LBS TORQUE
USE VEKTEK TORQUE TOOL
NEW STYLE TORQUE TOOL AT200103 (8 PT)
OLD STYLE TORQUE TOOL AT200101 (2 PT)

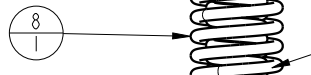


PISTON KIT INCLUDES PISTON AND RETAINING RING 23050012

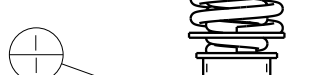
INSTALL WITH LIPS DOWN



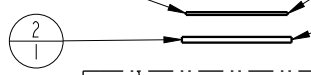
SPRING PAK
REMOVAL - INSERT 1/8" INTERNAL HEX WRENCH THRU SAE 4 PORT INTO SPRING PAK RETAINER AND ROTATE CLOCKWISE AS VIEWED FROM BOTTOM. (REINSTALL - REVERSE ABOVE PROCEDURE)



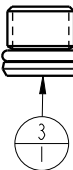
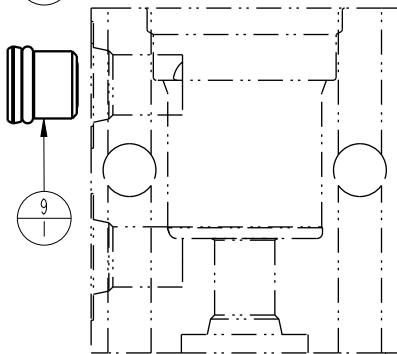
SPRING KIT 61200110
INCLUDES
SPRING PAC 92060001 AND BOTH RETAINING RINGS 23002002 & 23050012



RETAINING RING, 23002002 (NARROW GROOVE)
OLD STYLE



RETAINING RING, 23050012 (WIDE GROOVE)
CURRENT STYLE, CIRCA 08/01/2003



BODY,
NOT A REPLACEMENT PART

TIGHTEN SAE 4 SOCH PLUG AND SAE 4 BREATHER ASSEMBLY TO 7 FT-LBS TORQUE

N/A	N/A	61200110	KIT, SPRING	N/A	N/A	NOTED
N/A	N/A	6V200110	KIT, SEAL, FKM	N/A	NOTED	N/A
N/A	N/A	60200110	KIT, SEAL, STANDARD	NOTED	N/A	N/A
9	1	92090001	ASSY, BREATHER, SAE #4			
8	1	92060001	SPRING PAK,CYL,3900,0.5 STRK			X
7	1	82031002	GLAND,CYL, 3900 & 17.8 KN			
6	1	62201004	Kit,Piston, Ring&Tag,3900,0.5 STRK			
5	1	39011018	WIPER,SNAP-IN, (13/16)	X	39012008	
4	1	39010014	SEAL, BEVEL, 13/16 x 3/32 x 1	X	39012001	
3	1	30601144	PLUG, SOCH, SAE 4			
2	1	23050012	SNAP RING, INTERNAL			X
1	1	23002002	SNAP RING, INTERNAL			X
No.	QTY	PART No.	DESCRIPTION	Standard Seal Kit	FKM Seal Kit	Spring Kit

PARTS LIST



VEKTEK, INC.
1334 E. SIXTH AVE. P.O. BOX 625
EMPORIA, KS. 66801 U.S.A.

ASSEMBLIES AFFECTED

20111000

20111000F

PARTS LIST, ASSY,CYL,BB,3900,0.5 STRK,SA

SIZE
A

PL2051

REV
H

SHEET 1 OF 1

H	4701	RELEASE	RLK	6/16/22
REV	IN ACCORDANCE WITH ECN	EFFECTIVE DATE	REVISED BY	DATE
DRW BY:	JACOB	DRAWING STATUS: Released		
DATE:	08/06/90	PRODUCTION APPROVED FOR RELEASED STATUS ONLY		

FORM FEG035_PL_ASIZE, REV. B