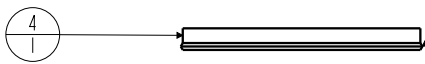
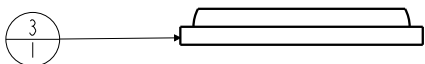
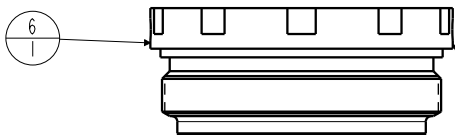


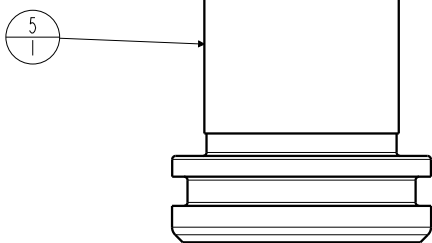
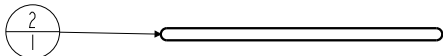
LUBRICATE ALL SEALS WITH CLEAN HYDRAULIC OIL PRIOR TO ASSEMBLY. DO NOT USE SILICONE BASED LUBRICANTS.



INSTALL LIPS DOWN

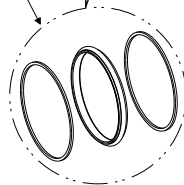


TIGHTEN TO 55 FT-LBS TORQUE
USE VEKTEK TORQUE TOOL
NEW STYLE TORQUE TOOL AT200151, 10 POINTED TOOL (CIRCA 2018)
OLD STYLE TORQUE TOOL AT200150, 2 POINTED SPANNER HOLE TOOL

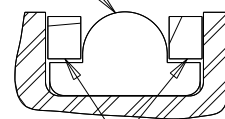


T-SEAL
INSTALLATION INFO

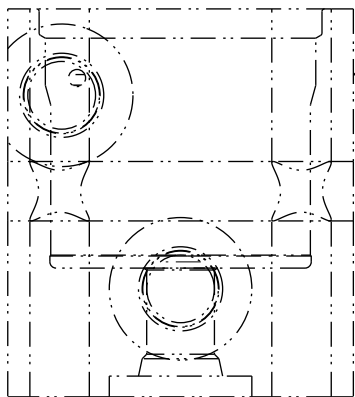
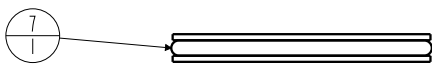
3 piece seal
Assemble with T-seal
between backup rings.



T-seal



Backup-ring



BODY,
NOT A REPLACEMENT PART



TIGHTEN TO
84 IN-LBS
TORQUE

No.	QTY	PART No.	DESCRIPTION	Std. Seal Kit	FKM Seal Kit
N/A	N/A	6V200214	SEAL KIT, FKM		NOTED
N/A	N/A	60200215	SEAL KIT, STANDARD	NOTED	
7	1	39H11031	SEAL, T, (1 5/16X5/32X1 1/2)	X	39V11031
6	1	82031501	GLAND, CYL, 8800 & 39.9 KN		
5	1	82011504	PISTON, CYL, 8800, .5 STRK		
4	1	39011048	SEAL, LL, (1-1/8 X 1/8 X 1/8 X 1-3/8)	X	39012007
3	1	39011019	WIPER, SNAP-IN, (1-1/8)	X	39050020
2	1	39001013	O-RING, (-029)	X	39012014
1	1	30601144	PLUG, SOCH, SAE 4		

PARTS LIST



VEKTEK, INC.
1334 E. SIXTH AVE. P.O. BOX 625
EMPORIA, KS. 66801 U.S.A.

(WEIGHT 2.92 LBS)

ASSEMBLIES AFFECTED
20121500
20121500F

PARTS LIST, ASSY, CYL, BB, 8800, .5 STRK, DA

SIZE
A PL2063

REV
G

SHEET 1 OF 1

G	4312	RELEASE	JDW	04/18/21
REV	IN ACCORDANCE WITH ECN	EFFECTIVE DATE	REVISED BY	DATE
DRW BY:	JACOB	DRAWING STATUS: Released		
DATE:	08/06/90	PRODUCTION APPROVED FOR RELEASED STATUS ONLY		

FORM FEG035_PL_ASIZE, REV. B