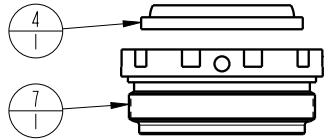
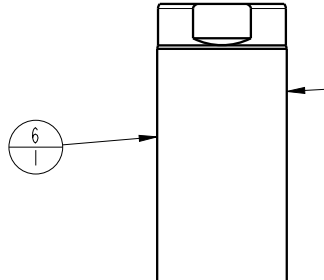


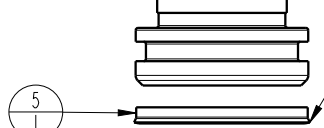
LUBRICATE ALL SEALS WITH CLEAN HYDRAULIC OIL PRIOR TO ASSEMBLY.
DO NOT USE SILICONE BASED LUBRICANTS.



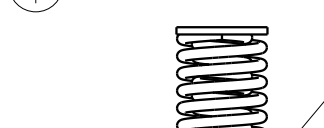
TIGHTEN TO 55 FT-LBS TORQUE
USE VEKTEK TORQUE TOOL
NEW STYLE TORQUE TOOL AT200151, 10 POINTED TOOL (CIRCA 2018)
OLD STYLE TORQUE TOOL AT200150, 2 POINTED SPANNER HOLE TOOL



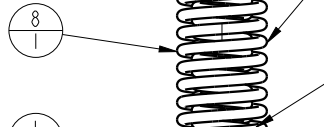
PISTON KIT INCLUDES PISTON AND RETAINING RING 23050013



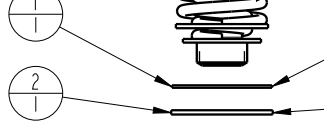
INSTALL WITH LIPS DOWN



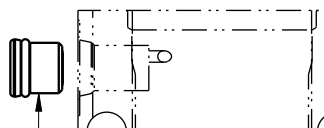
SPRING PAK REMOVAL - INSERT 1/8" INTERNAL HEX WRENCH THRU SAE 4 PORT INTO SPRING PAK RETAINER AND ROTATE CLOCKWISE AS VIEWED FROM BOTTOM. (REINSTALL- REVERSE ABOVE PROCEDURE)



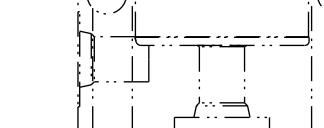
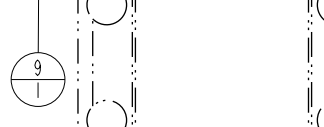
SPRING KIT 61201315 INCLUDES SPRING PAC 92060004 AND BOTH RETAINING RINGS 23002003 & 23050013



RETAINING RING, 23002003 (NARROW GROOVE) OLD STYLE



RETAINING RING, 23050013 (WIDE GROOVE) CURRENT STYLE, CIRCA 08/01/2003



BODY, NOT A REPLACEMENT PART

TIGHTEN SAE 4 SOCH PLUG AND SAE 4 BREATHER ASSEMBLY TO 7 FT-LBS TORQUE

N/A	N/A	61201315	KIT, SPRING	N/A	N/A	NOTED
N/A	N/A	6V200115	KIT, SEAL, FKM	N/A	NOTED	N/A
N/A	N/A	60200115	KIT, SEAL, STANDARD	NOTED	N/A	N/A
9	I	92090001	ASSY, BREATHER, SAE #4			
8	I	92060008	SPRING PAK, CYL, 8800, 1.5 STRK			X
7	I	82031501	GLAND, CYL, 8800 & 39.9 KN			
6	I	62201507	Kit, Piston, Ring & Tag, 8800, 1.5 STRK			
5	I	39011028	SEAL, BEVEL, 1-5/16 X 3/32 X 1-1/2	X	39012015	
4	I	39011019	WIPER, SNAP-IN, (1-1/8)	X	39050020	
3	I	30601144	PLUG, SOCH, SAE 4			
2	I	23050013	SNAP RING, INTERNAL			X
1	I	23002003	SNAP RING, INTERNAL			X
No.	QTY	PART No.	DESCRIPTION	Standard Seal Kit	FKM Seal Kit	Spring Kit

PARTS LIST



VEKTEK, INC.
1334 E. SIXTH AVE. P.O. BOX 625
EMPORIA, KS. 66801 U.S.A.

ASSEMBLIES AFFECTED

PARTS LIST, ASSY, CYL, BB, 8800, 1.5 STRK, SA

20111504

20111504F

SIZE
A

PL2089

REV
F

SHEET 1 OF 1

F	4249	RELEASE	JDW	08/06/20
REV	IN ACCORDANCE WITH ECN	EFFECTIVE DATE	REVISED BY	DATE
DRW BY:	JACOB	DRAWING STATUS: Released		
DATE:	06/24/96	PRODUCTION APPROVED FOR RELEASED STATUS ONLY		

FORM FEG035_PL_ASIZE, REV. B