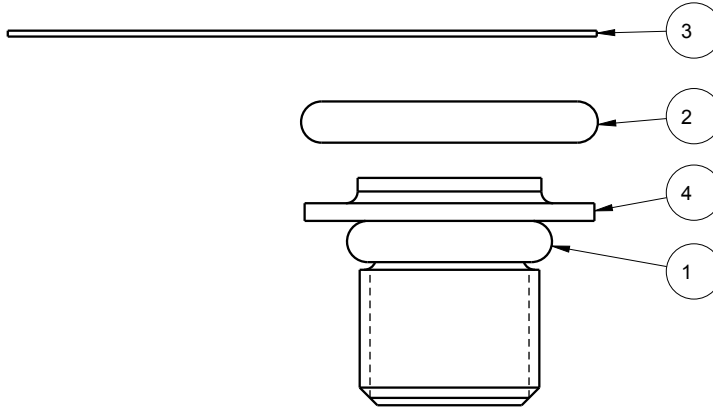


APPLY LUBRICANT TO ALL SEALS PRIOR TO INSTALLATION.
DO NOT USE SILICONE TYPE LUBRICANTS.

WARNING

DO NOT OVER TORQUE ADAPTER 30871123.
TORQUE IS NOT TO EXCEED 60 IN-LBS



N/A	N/A	6V308000	KIT, SEAL, FKM		
N/A	N/A	60308000	KIT, SEAL, STANDARD		
4	1	83070012	BODY, ADAPTER, RU, MM, SAE 2		
3	1	67000145	TAG, WARNING, ADAPTER, RU		
2	1	39050043	O-RING, (-012)	X	39V51044
1	1	39050036	O-RING, (-009)	X	39051024
No.	QTY	PART No.	DESCRIPTION	Included in Std. Seal Kit	Included in FKM Seal Kit

PARTS LIST



VEKTEK, INC.
1334 E. SIXTH AVE. P.O. BOX 625
EMPORIA, KS. 66801 U.S.A.

A	3383	RELEASE	JDW	12/15/17
REV	IN ACCORDANCE WITH ECN	EFFECTIVE DATE	REVISED BY	DATE
DRW BY: JDW	DRAWING STATUS: Released			
DATE: 12/15/17	PRODUCTION APPROVED FOR RELEASED STATUS ONLY			

ASSEMBLIES AFFECTED
30-8711-23
30-8711-23F

PARTS LIST, ASSY, ADAPTER, RU, MM, SAE 2

SIZE
A **PL3002**

REV
A

SHEET 1 OF 1

FORM FEG035_PL_ASIZE, REV. B