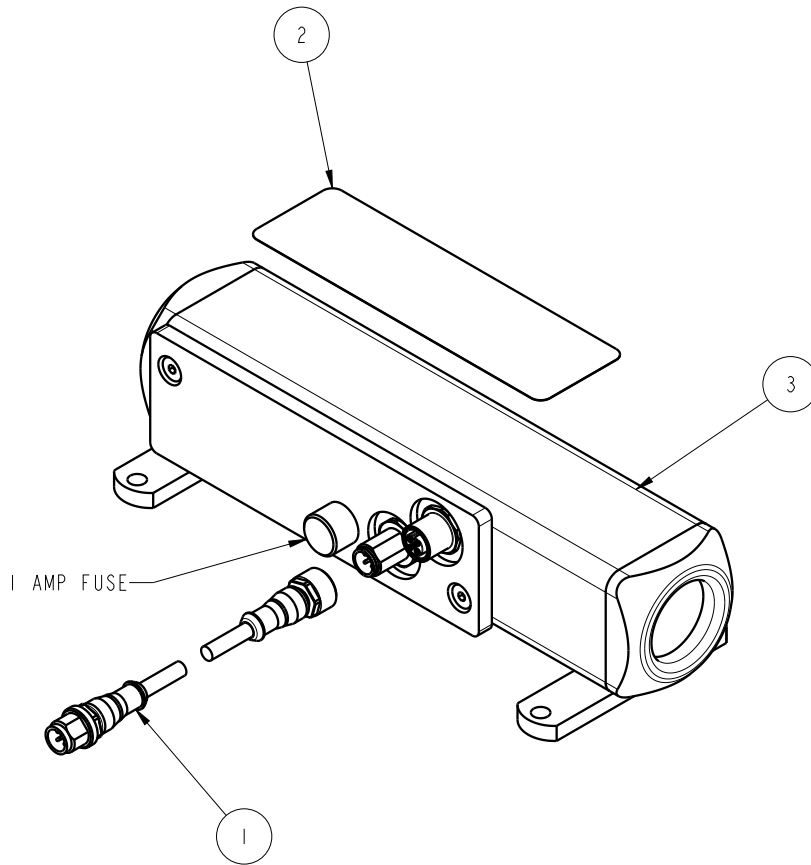


PARTS LIST, CONTROL, 2-HAND, NTD, 24VDC I/O

NO	QTY	PART NO	DESCRIPTION
N/A	N/A	95595015	ASSY, CONTROL, 2-HAND, NTD, 24VDC I/O
1	1	27742203	CABLE, M12 MALE, M12 FEMALE, 5 POLE, 5M
2	1	67040018	LABEL, WORKHOLDING EQUIPMENT
3	1	95595014	CONTROL, 2-HAND, NTD, 24VDC I/O
4	1	1S5503	INSTR SHEET, CONTROL, 2-HAND, NTD



Vekttek, Inc. 1334 East Sixth Ave. P.O. Box 625 Emporia, Ks. 66801 U.S.A.	Instruction Sheet	IS	5503	
		REV:	B	
		ECN:	4108	
		DRAWN BY/DATE:	N. PETERS	3/4/20
		APPR/DATE:	G. YOTZ	07/25/17
Mounting/Operating Instructions: 2-Hand, No-Tie-Down, Control				

Mounting Instructions

1. This control must be installed by qualified personnel in electro/mechanical systems and safety.
2. This control should be hard mounted using (4) ¼”, #10, or M6 fasteners at least 18” (450mm) from any possible hazards. See page 2 of instructions.
3. All connections to the control are via the external M12 male connector and M12 female receptacle. No internal wiring is required.
4. First, disconnect power to pump.
5. Disconnect the pendant from the pump I/O block M12 female port.
6. Connect the control unit to the pump I/O block M12 female port via the M12 male connector of the control cable.
- 7.
8. Reconnect the pendant to the control unit via M12 female receptacle.
9. Insure the pendant is switched to the off or safe position before reconnecting power to the pump.

Operating Instructions

1. The pump must be powered up and switched on to allow it to build system pressure.
2. Switch the pendant to the desired position (Clamp, off, or Unclamp).
3. Press each button on the 2-hand control unit simultaneously and hold until all clamps or cylinders move to the desired position and system pressure is reached. Release each button.
4. After machine cycle is complete, switch the pendant to the desired position (Clamp, Off, or Unclamp).
5. Press each button on the 2-hand control unit simultaneously and hold until all clamps or cylinders move to the desired position and system pressure is reached. Release each button.
6. **DO NOT** attempt to defeat the 2-hand no-tie down control unit by permanently holding the buttons in by means other than human interface. The control unit will be deactivated when powered off and will no longer function properly.
7. If any instructions are not clear, contact Vekttek at 1-800-992-0236.

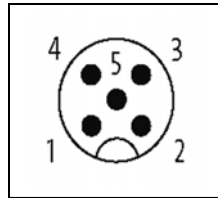
Vekttek, Inc. 1334 East Sixth Ave. P.O. Box 625 Emporia, Ks. 66801 U.S.A.	Instruction Sheet	IS	5503	
		REV:	B	
		ECN:	4108	
		DRAWN BY/DATE:	N. PETERS	3/4/20
		APPR/DATE:	G. YOTZ	07/25/17
Mounting/Operating Instructions: 2-Hand, No-Tie-Down, Control				

Specifications

- 24VDC Input / 24VDC Output
- Push buttons are Normally Open Contacts. Contacts will close when buttons are pushed simultaneously allowing continuity of +24VDC from the pendant switch through the control unit to the pump.

3. Control cable wiring is as follows:

- PIN 1: POWER (+24VDC)
- PIN 2: SOLENOID B CONTROL (0VDC)
- PIN 3: UNUSED (0VDC)
- PIN 4: SOLENOID A CONTROL (0VDC)
- PIN 5: GROUND



Mounting and Electrical Connections

