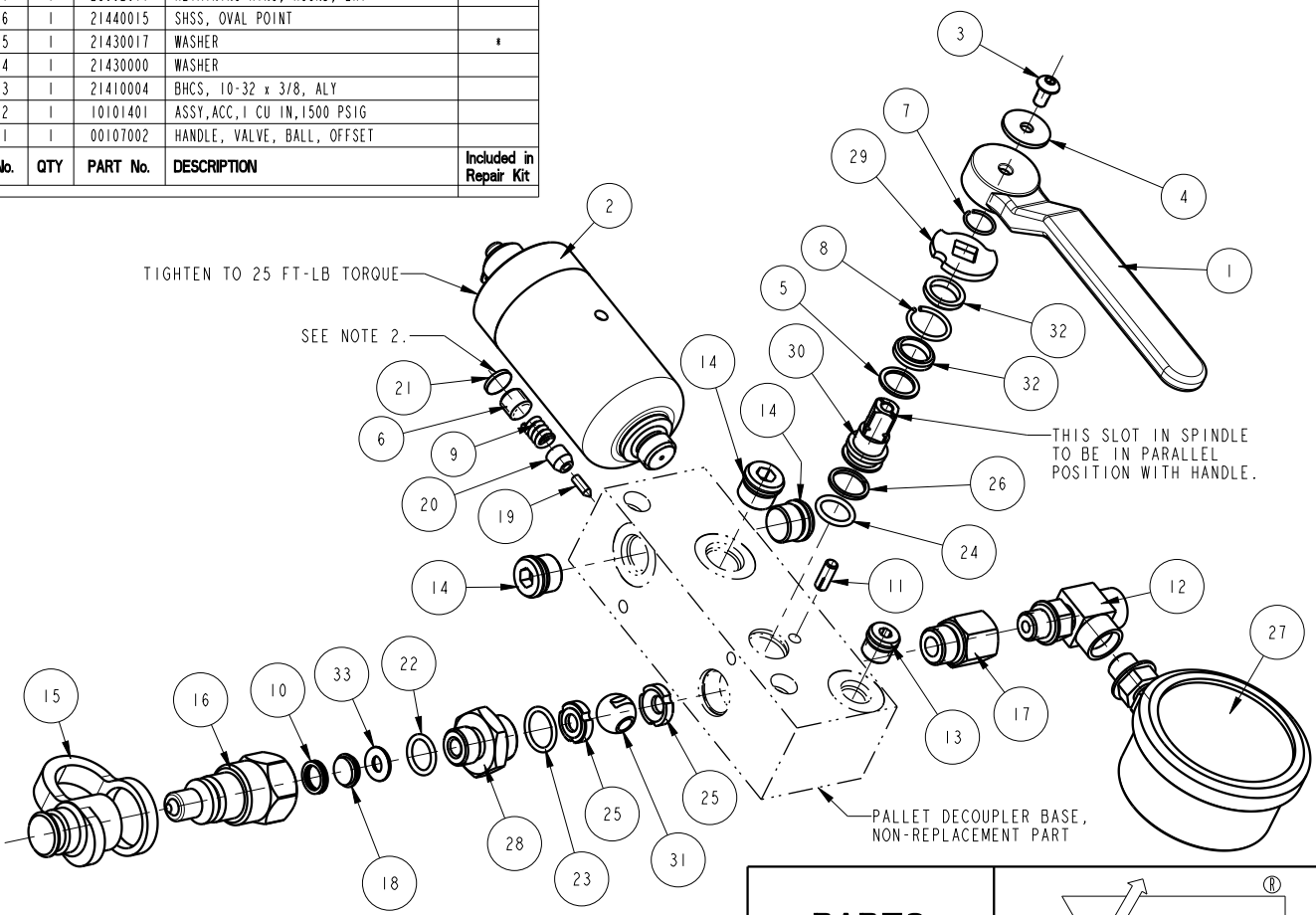



No.	QTY	PART No.	DESCRIPTION	Included in Repair Kit
N/A	N/A	62560000	KIT, REPAIR, PALLET DECOUPLER	
33	1	39V00068	O-RING, (-202)	*
32	2	87010193	SPACER, SPINDLE, STEEL, VALVE, BALL	*
31	1	87010192	BALL, CONTROL, DIRECTIONAL	*
30	1	87010191	SPINDLE, CONTROL, VALVE, BALL	*
29	1	87010190	WASHER, LIMIT, VALVE, BALL	
28	1	85670000	ADAPTOR, DECOUPLER, PALLET	
27	1	72212162	GAUGE, PRESS, HYDR, 10000 PSI	
26	1	39010042	BU RING, (-014)	*
25	2	39010040	SEAL, VALVE, BALL	*
24	1	39000037	O-RING, (-906)	*
23	1	39000035	O-RING, (-015)	*
22	1	39000026	O-RING, (-906)	*
21	1	35349089	EXPANSION PLUG	*
20	1	35349057	GUIDE, RELEASE	
19	1	35349056	ROD, RELEASE	*
18	1	31050001	FILTER SCREEN, SAE 6, 178 MICRON	*
17	1	30801264	REDUCER, MALE SAE 6 - FEM SAE 4	
16	1	30772766	COUPLING, OD, SAE 6, MALE	
15	1	30719706	COVER, DUST, OD, SAE 6	
14	3	30601166	PLUG, SOCH, SAE 6	
13	1	30601144	PLUG, SOCH, SAE 4	
12	1	30231244	TEE, RUN, SAE 4 FEM - SAE 4 MALE	
11	1	23521018	PIN, GROOVE, TYPE H, 3/16, 1/2 LONG	
10	1	23355004	SPRING, WIRE, FLAT, CREST-TO-CREST	*
9	1	23350057	SPRING, COMPRESSION	
8	1	23012008	RETAINING RING, ROUND, INTL	*
7	1	23002011	RETAINING RING, ROUND, EXT	*
6	1	21440015	SHSS, OVAL POINT	
5	1	21430017	WASHER	*
4	1	21430000	WASHER	
3	1	21410004	BHCS, 10-32 x 3/8, ALY	
2	1	10101401	ASSY, ACC, 1 CU IN, 1500 PSIG	
1	1	00107002	HANDLE, VALVE, BALL, OFFSET	

NOTE:
 1. APPLY LUBRICANT TO ALL SEALS PRIOR TO INSTALLATION. DO NOT USE SILICON TYPE LUBRICANTS.
 2. SET THE OVER-PRESSURE RELIEF VALVE AT 6,000 PSIG AND THEN INSTALL THE EXPANSION PLUG.



PARTS LIST	 VEKTEK, INC. 1334 E. SIXTH AVE. P.O. BOX 625 EMPORIA, KS. 66801 U.S.A.	
	PARTS LIST, ASSY, PD, HORZ, 1500 PSI	
ASSEMBLIES AFFECTED	56-0002-03	
SIZE	A	REV K
FORM FEG035_PL_ASIZE, REV. B		

K	2805	RELEASE	JDW	03/04/15
REV	IN ACCORDANCE WITH ECN	EFFECTIVE DATE	REVISED BY	DATE
DRW BY:	BUSH	DRAWING STATUS: Released		
DATE:	9-16-97	PRODUCTION APPROVED FOR RELEASED STATUS ONLY		