

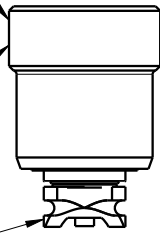
NOTE:

1. Seal Kit P/N: 60-5623-00
2. Face Seal P/N: 39-0562-30
3. Seal Mounting Tool P/N: AT-5603-00
4. Thread-In Mounting Tool P/N: AT-5613-00
5. Instructions are on IS5633

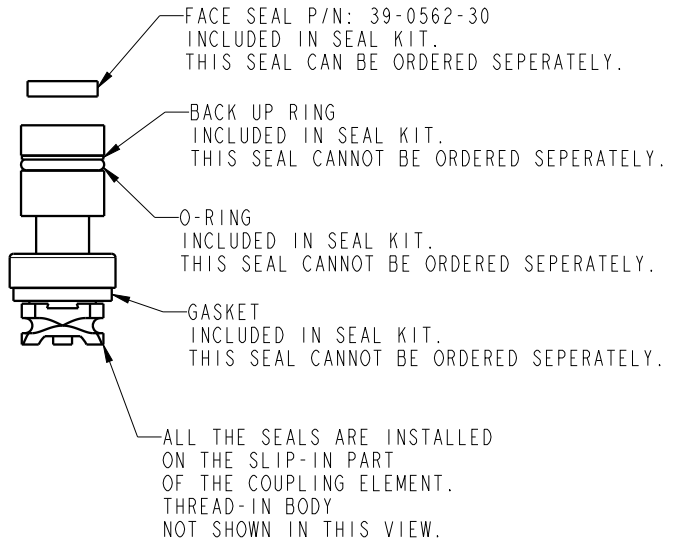
**COUPLING ELEMENT
THREAD-IN BODY
SHOWN WITH
SLIP-IN INSTALLED**

Torque to
11 lb*ft

SLIP-IN



SLIP-IN



**PARTS
LIST**



VEKTEK, INC.
1334 E. SIXTH AVE. P.O. BOX 625
EMPORIA, KS. 66801 U.S.A.

ASSEMBLIES AFFECTED

56-1023-00
56-2023-00

PARTS LIST, COUPLING ELEMENTS, DEPRESS, ND3

SIZE
A PL5635

REV
C

C	3840	RELEASE	JDW	05/28/19
REV	IN ACCORDANCE WITH ECN	EFFECTIVE DATE	REVISED BY	DATE
DRW BY:	Twa	DRAWING STATUS: Released		
DATE:	8/18/16	PRODUCTION APPROVED FOR RELEASED STATUS ONLY		

SHEET 1 OF 1

1

2

REPLACING THE FACE SEAL:

1. The Coupling Mechanisms (2) are designed so that the face seal (1) can be replaced without having to removed the Mechanism (2) from its cavity.
2. Using a scribe or a sharp pick, pull the old face seal (1) out from the pilot groove.
3. Insert the new face seal (1) into the tip of the Seal Mounting Tool (P/N: AT-5603-00).
4. Taking the Seal Mounting Tool (P/N: AT-5603-00) in your hand, press the face seal (1) until it's flush in the pilot groove, keeping the Seal Mounting Tool (P/N: AT-5603-00) axially aligned to the Mechanism (2).

B

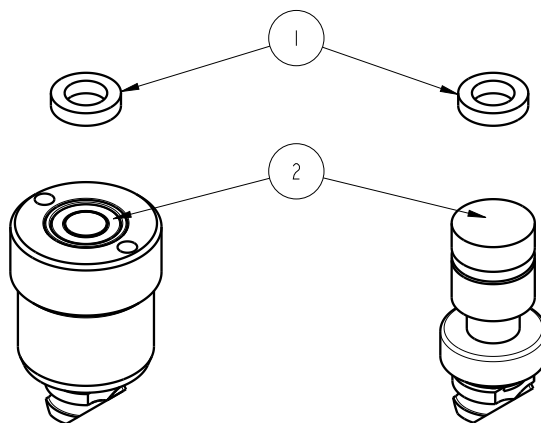
B

A

A

THREAD-IN

SLIP-IN



INSTALLATION INSTRUCTIONS



VEKTEK, INC.
 1334 E. SIXTH AVE. P.O. BOX 625
 EMPORIA, KS. 66801 U.S.A.

A	3077	RELEASE	TWA	8/19/16
REV	IN ACCORDANCE WITH ECN	EFFECTIVE DATE	REVISED BY	DATE
DRW BY:	TWA	DRAWING STATUS: Design		
DATE:	8/19/16	PRODUCTION APPROVED FOR RELEASED STATUS ONLY		

ASSEMBLIES AFFECTED	
56-1013-00	56-2013-00
56-1023-00	56-2023-00

INSTRUCTION SHEET, COUPLING ELEMENTS, ND3	
SIZE	IS5633
A	REV A

1

2

FORM FEG041-IS-ASIZE, REV. B

SHEET 1 OF 1