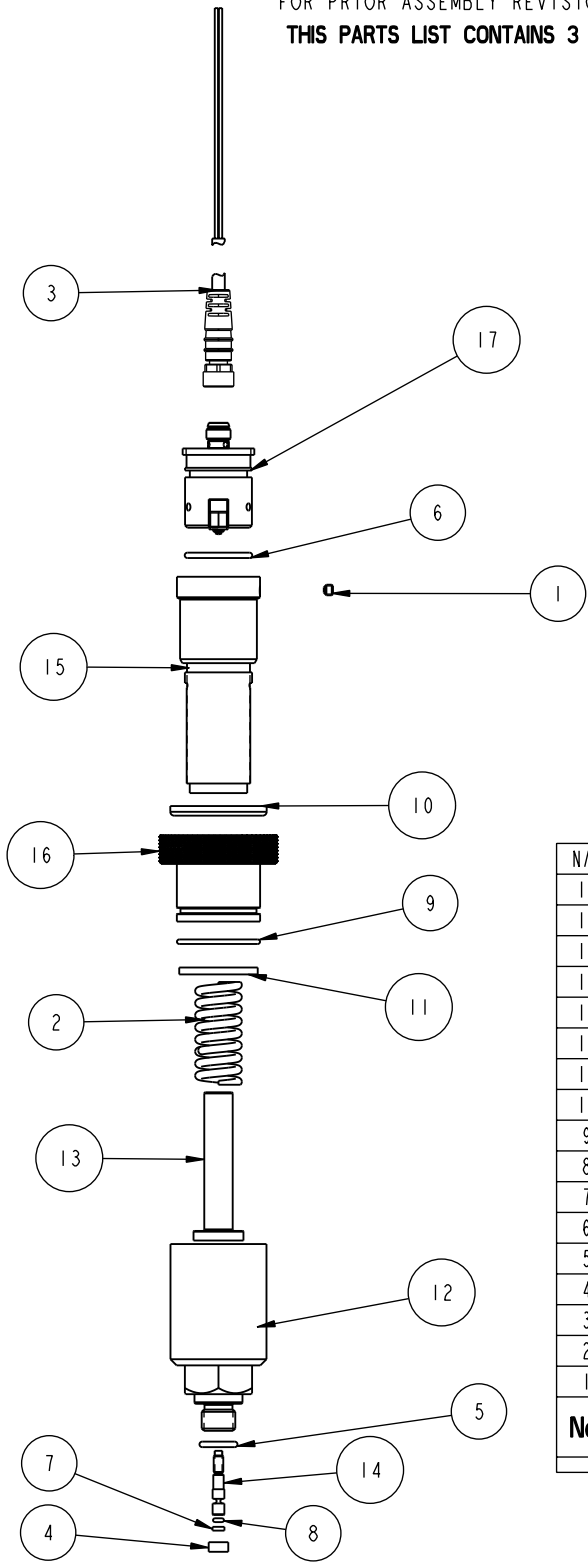


THIS PARTS LIST APPLIES TO ASSEMBLIES AT REVISION LEVEL M (AS OF 6-7-2011) AND LATER.
 FOR PRIOR ASSEMBLY REVISIONS REFERENCE SHEET 2 OF THIS PARTS LIST.
THIS PARTS LIST CONTAINS 3 SHEETS.

APPLY LUBRICANT TO ALL SEALS PRIOR TO INSTALLATION
 DO NOT USE SILICONE TYPE LUBRICANTS.



N/A	N/A	62707003	KIT, REPAIR, SWITCH, PRESS	
17	1	97075005	ASSY, SWITCH, PRESS, M8	X
16	1	87075010	ADJUSTER, SWITCH, PRESSURE, SEVERE	
15	1	87075007	COLLAR, SWITCH, PRESSURE	
14	1	87075006	PIN, STROKE, SWITCH, PRESSURE	
13	1	87075003	PLUNGER, SWITCH, PRESSURE	
12	1	87075002	BODY, SWITCH, PRESSURE	
11	1	87075001	SHIM, ENDED, DOUBLE	
10	1	39053003	WIPER,PRESS-IN,1", 85 FKM	
9	1	39051075	O-RING,24.5mm x 1.5,70 NBR	
8	1	39050053	O-RING,(-002),.042x.050,70 NBR	
7	1	39050052	SEAL, PIN, STROKE, SWITCH, PRESS	
6	1	39050026	O-RING,(-018),.739x.070,70 NBR	X
5	1	39000070	O-RING,(-904),.351x.072,90 AU	X
4	1	31091006	FILTER, BRONZE, SINTERED, .250, 150µ	
3	1	27642403	CORDSET, FEMALE, M8, 1M	
2	1	23350015	SPRING	
1	1	21440022	SHSS, CUP POINT	
No.	QTY	PART No.	DESCRIPTION	Included in Repair Kit

PARTS LIST



VEKTEK, INC.
 1334 E. SIXTH AVE. P.O. BOX 625
 EMPORIA, KS. 66801 U.S.A.

ASSEMBLIES AFFECTED
 70750075

PARTS LIST, ASSY, SWITCH, PRESS, IM CABLE

SIZE
 A PL7108

REV
 C

SHEET 1 OF 3

C	2294	RELEASE	DKC	6-24-11
REV	IN ACCORDANCE WITH ECN	EFFECTIVE DATE	REVISED BY	DATE
DRW BY:	DKC	DRAWING STATUS: Released		
DATE:	6-6-11	PRODUCTION APPROVED FOR RELEASED STATUS ONLY		

FORM FEG035_PL_ASIZE, REV. A

THIS PARTS LIST APPLIES TO ASSEMBLIES AT REVISION LEVEL E (AS OF 1-24-2002) THROUGH L (PRIOR TO 6-7-11). FOR PRIOR ASSEMBLY REVISIONS REFERENCE SHEET 3.

APPLY LUBRICANT TO ALL SEALS PRIOR TO INSTALLATION
DO NOT USE SILICONE TYPE LUBRICANTS.



NOTE: 97-0750-02 REPLACED BY 97-0750-05. ORDER 27-6424-03 CORDSET AND REPAIR KIT 62-7070-03 FOR REPLACEMENT.

No.	QTY	PART No.	DESCRIPTION	Included in Repair Kit
N/A	N/A	62707003	KIT, REPAIR, SWITCH, PRESS	
-	1	97075005	ASSY, SWITCH, PRESS, M8	X
15	1	97075002	ASSY, SWITCH, PRESSURE	
14	1	87075007	COLLAR, SWITCH, PRESSURE	
13	1	87075006	PIN, STROKE, SWITCH, PRESSURE	
12	1	87075005	ADJUSTER, SWITCH, PRESSURE	
11	1	87075003	PLUNGER, SWITCH, PRESSURE	
10	1	87075002	BODY, SWITCH, PRESSURE	
9	1	87075001	SHIM, ENDED, DOUBLE	
8	2	39050054	O-RING, .990 x .045, 90 AU	
7	1	39050053	O-RING, (-002), .042x.050, 70 NBR	
6	1	39050052	SEAL, PIN, STROKE, SWITCH, PRESS	
5	1	39050026	O-RING, (-018), .739x.070, 70 NBR	X
4	1	39000024	O-RING, (-904), .351x.072, 90 NBR	
3	1	31091006	FILTER, BRONZE, SINTERED, .250, 150µ	
2	1	23350015	SPRING	
1	1	21440022	SHSS, CUP POINT	



VEKTEK, INC.
1334 E. SIXTH AVE. P.O. BOX 625
EMPORIA, KS. 66801 U.S.A.

PARTS LIST, ASSY, SWITCH, PRESS, 36 IN CABLE

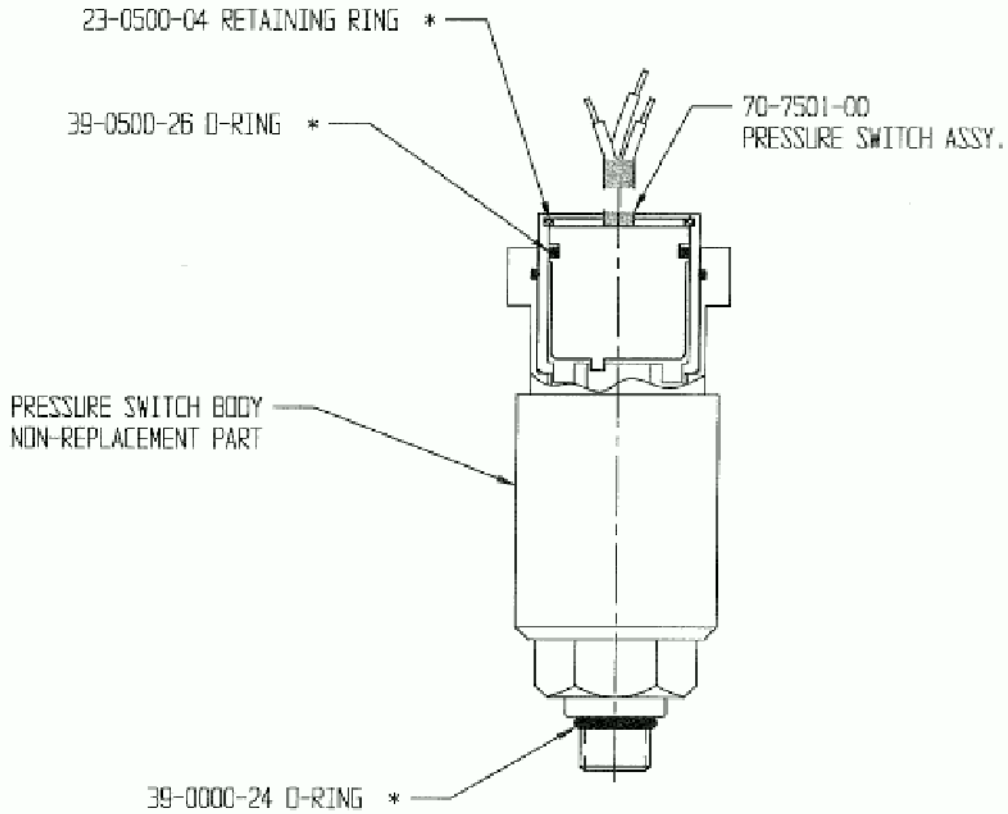
SIZE A PL7108

REV C

FORM FEG035_PL_ASIZE, REV. A

SHEET 2 OF 3

THIS PARTS LIST APPLIES TO ASSEMBLIES AT REVISION LEVEL D (PRIOR TO 1-24-2002) AND EARLIER.



APPLY LUBRICANT TO ALL SEALS PRIOR TO INSTALLATION
DO NOT USE SILICONE TYPE LUBRICANTS.

* INDICATED PARTS INCLUDED IN REPAIR KIT 62-7070-01.

 VEKTEK VEKTEK, INC. 1334 E. SIXTH AVE. P.O. BOX 625 EMPORIA, KS. 66801 U.S.A.		
PARTS LIST, ASSY, SWITCH, PRESS, IM CABLE		
SIZE A	PL7108	REV C
FORM FEG035_PL_ASIZE, REV. A		

SHEET 3 OF 3