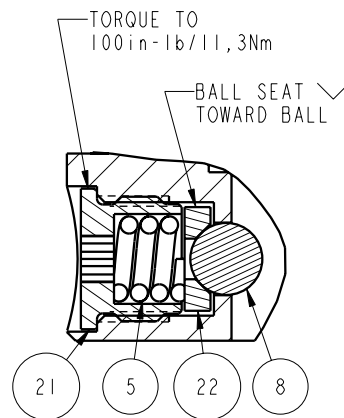
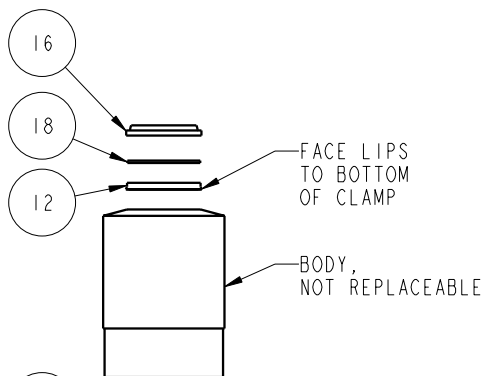
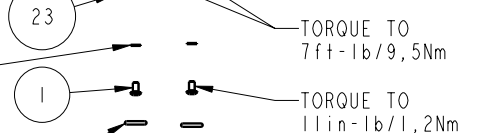
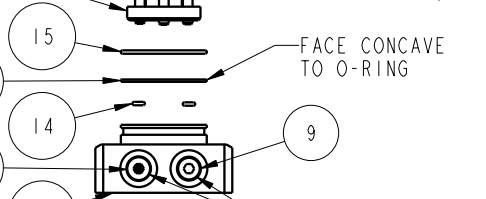
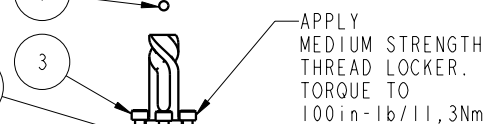
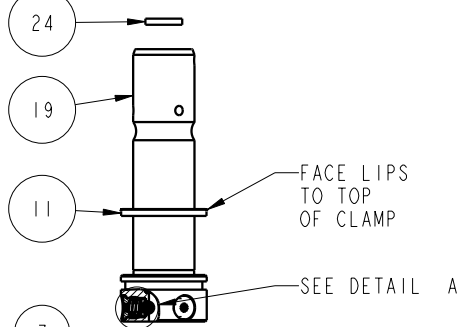
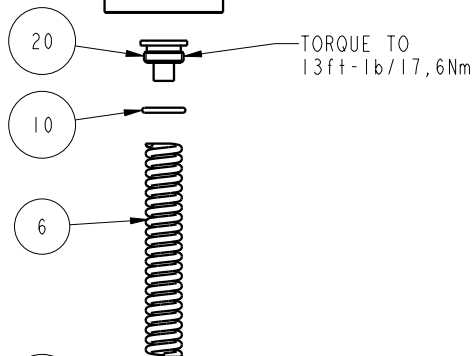


APPLY LUBRICANT TO ALL SEALS
PRIOR TO INSTALLATION.
DO NOT USE SILICONE TYPE LUBRICANTS.
FOR PROPER ARM MOUNTING SEE IS1505.



DETAIL A
SCALE 1.500



No.	QTY	PART No.	DESCRIPTION	Std. Seal Kit	FKM Seal Kit	Spring Kit
N/A	N/A	IS1505	INSTRUCTION SHEET, ARM INSTALLATION			
N/A	N/A	61704022	SPRING KIT			
N/A	N/A	6V711041	SEAL KIT, FKM			
N/A	N/A	60711041	SEAL KIT, STANDARD			
26	1	92090001	ASSY, BREATHER, SAE #4			
25	1	81591823	CAM, SC, LP, 5000/22KN, LH, TC			
24	1	81591302	DISK, Ø.75 X .12			X
23	1	81541808	BASE, SC, BF, LP, 5000			
22	3	81532108	SEAT, BALL, SC, LP, TC			
21	3	81532107	RETAINER, SC, LP, TC			
20	1	81531811	PLUG, SC, LP, 5000&22KN, SA, TC			
19	1	81511810	PLUNGER, SC, LP, 5000&22KN, SA, TC			
18	1	39054008	BU RING, (-218), HYTREL	X		X
17	1	39054007	BU RING, (-030), 90 NBR	X		39054021
16	1	39053005	WIPER, SNAP-IN, (-1/4), 90 FKM	X		X
15	1	39051042	O-RING, (-030), 1.814x.070, 90 HNBR	X		39051021
14	2	39051041	O-RING, (-006), .114x.070, 90 HNBR	X		39051041
13	2	39050042	O-RING, (-011), .301x.070, 90 AUD	X		39051025
12	1	39011060	SEAL, BEV, INSR, 1.25x.125x1.5, 85 HNBR	X		39052015
11	1	39011055	SEAL, BEV, 1-9/16x3/32x1-3/4, 85 AU	X		39052013
10	1	39000029	O-RING, (-115), .674x.103, 90 NBR	X	X	X
9	1	30601144	PLUG, SOCH, SAE 4			
8	3	23650004	BALL, TUNGSTEN-CARBIDE .250			
7	1	23600011	BALL, STEEL, ALLOY, .187			X
6	1	23350067	SPRING, COMP., .738X.142X5.3X3.24, 133			X
5	3	23350066	SPRING, COMP., .296X.06X.31X.21, 903			
4	2	21500200	WASHER, .124x.207x.024, COPPER			
3	3	21500031	SHCS, M5 x 0,8 x 14, ALY			
2	10	21500023	SHCS, M5 x .8-66 X 30MM			
1	2	21500019	SCREW, CAP, BTNH, M3 X 6, ALY			

PARTS LIST



VEKTEK, INC.
1334 E. SIXTH AVE. P.O. BOX 625
EMPORIA, KS. 66801 U.S.A.

ASSEMBLIES AFFECTED
14271801
14271801F

SIZE A
PL7162

REV B

SHEET 1 OF 1

FORM FEG035_PL_ASIZE, REV. B

B	2596	RELEASE	JDW	12/06/13
REV	IN ACCORDANCE WITH ECN	EFFECTIVE DATE	REVISED BY	DATE
DRW BY:	JDW	DRAWING STATUS: Released		
DATE:	6-17-11	PRODUCTION APPROVED FOR RELEASED STATUS ONLY		

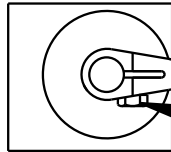
1 **2**

READ ALL INSTRUCTIONS BEFORE INSTALLING ARMS FAILURE TO FOLLOW INSTALLATION INSTRUCTIONS WILL VOID PRODUCT WARRANTY !

–Installing or Positioning of Low Profile Swing Clamp Arms–

**NOTE: If the arm is already installed on the plunger,
loosen the cap screw.**

**CAUTION: Never attempt to rotate the arm before loosening
the cap screw. This can damage the plunger rotating mechanism.**



- 1. Rotate the arm to the desired radial position.**
- 2. Tighten to the torque specification listed below.**

MODEL	TORQUE ft-lb	TORQUE N-m
5000lb & 22Kn	115 ft-lb	156 N-m
7500lb & 33Kn	225 ft-lb	305 N-m

**IT IS RECOMMEND THE CROSS BOLT
BE REPLACED IF THE ARM NEEDS
REMOVED AFTER IT HAS BEEN IN SERVICE.**

CROSS BOLT	CROSS BOLT	CROSS BOLT	CROSS BOLT
5000 & 22KN	5000 & 22KN	7500 & 33KN	7500 & 33KN
SHORT LONG DOUBLE	UPREACH	SHORT LONG DOUBLE	UPREACH
21-5000-24	21-5000-25	21-5000-28	21-5000-25

**Instruction
Sheet**



VEKTEK, INC.
1334 E. SIXTH AVE. P.O. BOX 625
EMPORIA, KS. 66801 U.S.A.

Arm Installation Instruction Sheet

Low Profile Swing Clamps

SIZE A	1S1505	REV C
-----------	--------	----------

FORM FEG041-IS-ASIZE, REV. B

C	2799	RELEASE	JDW	01/29/15
REV	IN ACCORDANCE WITH ECN	EFFECTIVE DATE	REVISED BY	DATE
DRAWING STATUS: Released		PRODUCTION APPROVED FOR RELEASED STATUS ONLY		

SHEET 1 OF 1