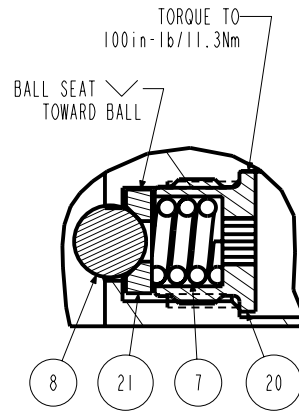
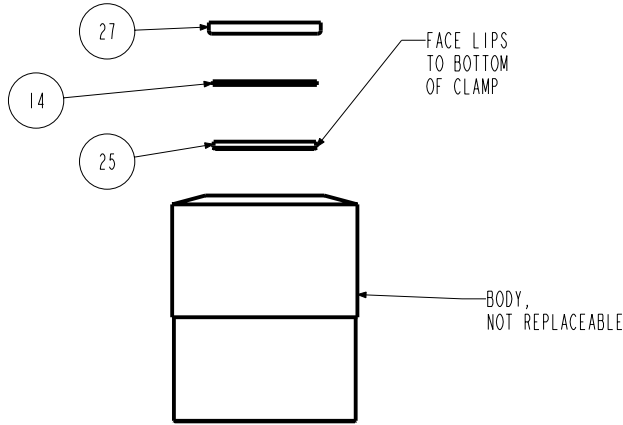
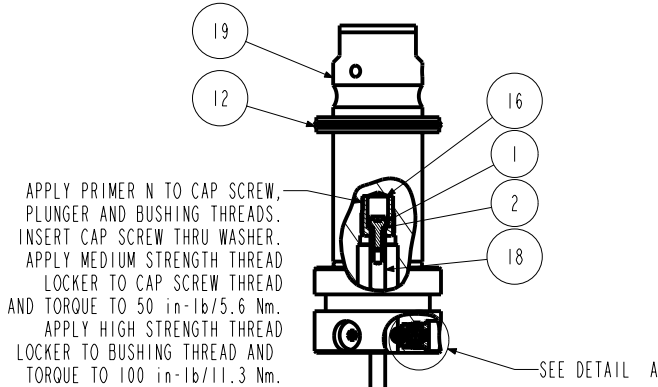


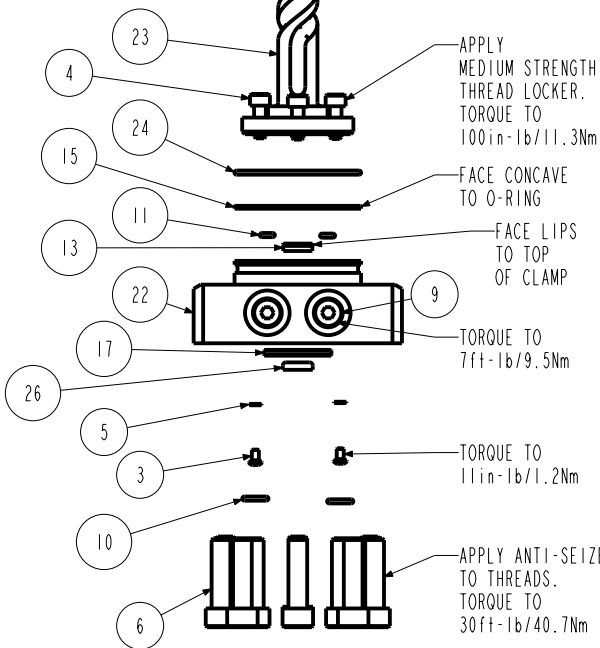
APPLY LUBRICANT TO ALL SEALS
PRIOR TO INSTALLATION.
DO NOT USE SILICONE TYPE LUBRICANTS.
FOR PROPER ARM MOUNTING SEE IS1505.



DETAIL A
SCALE 1.500



APPLY PRIMER N TO CAP SCREW,
PLUNGER AND BUSHING THREADS.
INSERT CAP SCREW THRU WASHER.
APPLY MEDIUM STRENGTH THREAD
LOCKER TO CAP SCREW THREAD
AND TORQUE TO 50 in-lb/5.6 Nm.
APPLY HIGH STRENGTH THREAD
LOCKER TO BUSHING THREAD AND
TORQUE TO 100 in-lb/11.3 Nm.



N/A	N/A	IS1505	INSTRUCTION SHEET, ARM INSTALLATION		
N/A	N/A	6V711050	SEAL KIT, FKM		
N/A	N/A	60711050	SEAL KIT, STANDARD		
27	1	39V11051	WIPER, PRESS-IN, (1-1/2)	X	X
26	1	39V10029	WIPER, PRESS-IN, (1/4)	X	X
25	1	39H52000	SEAL, U-CUP, 1-1/2 x 1/8 x 1-3/4	X	39V52000
24	1	39H51002	O-RING, (-033)	X	39V51002
23	1	81592131	CAM, SC, LP, 7500/33KN, RH, TC, PR		
22	1	81542113	BASE, SC, BF, LP, 7500, PR		
21	3	81532108	SEAT, BALL, SC, LP, TC		
20	3	81532107	RETAINER, SC, LP, TC		
19	1	81512121	PLUNGER, SC, LP, 7500/33KN, DA, TC, PR		
18	1	81500053	ROD, ACTUATOR, SC, LP, BF, 7500/33KN		
17	1	81500040	RING, LOCATOR, SC, LP, PR		
16	1	81500039	BUSHING, PLUNGER, PR, SC, LP		
15	1	39054017	BU RING, (-033)	X	39054023
14	1	39054016	BU RING, (1.5x.125x.063)	X	X
13	1	39052043	SEAL, LL, (1/4 X 1/8 X 1/8 X 1/2)	X	39V52043
12	1	39052030	SEAL, CROWN, 1-3/4x2-1/8x1/4	X	39V52030
11	2	39051041	O-RING, (-006)	X	39V51041
10	2	39050042	O-RING, (-011)	X	39051025
9	2	30601144	PLUG, SOCH, SAE 4		
8	3	23650004	BALL, TUNGSTEN-CARBIDE .250		
7	3	23350066	SPRING, COMPRESSION		
6	10	21500305	SHCS, M8 X 1.25-6G X 30MM		
5	2	21500200	WASHER		
4	3	21500031	SHCS, M5 X 0.8 X 14, ALY		
3	2	21500019	SCREW, CAP, BTNH, M3 X 6, ALY		
2	1	21430022	WASHER		
1	1	21410049	SCREW, CAP, SOCH, 8-32 X 3/8, ALY		
No.	QTY	PART No.	DESCRIPTION	Std. Seal Kit	FKM Seal Kit

PARTS LIST



VEKTEK, INC.
1334 E. SIXTH AVE. P.O. BOX 625
EMPORIA, KS. 66801 U.S.A.

ASSEMBLIES AFFECTED

14222100PR

14222100FPR

PARTS LIST, ASSY, SC, LP, TC, BF, 7500, DA, RH, PR

SIZE
A

PL7207

REV
A

A	2679	RELEASE	JDW	06/23/14
REV	IN ACCORDANCE WITH ECN	EFFECTIVE DATE	REVISED BY	DATE
DRW BY:	JDW	DRAWING STATUS: Released		
DATE:	10/16/13	PRODUCTION APPROVED FOR RELEASED STATUS ONLY		

