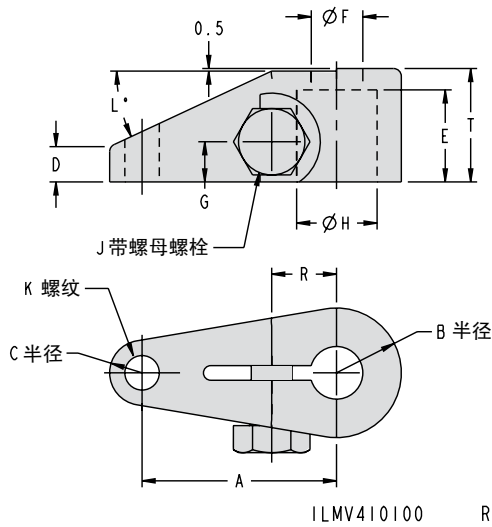


旋转缸旋臂

标准臂长度和抬升臂尺寸



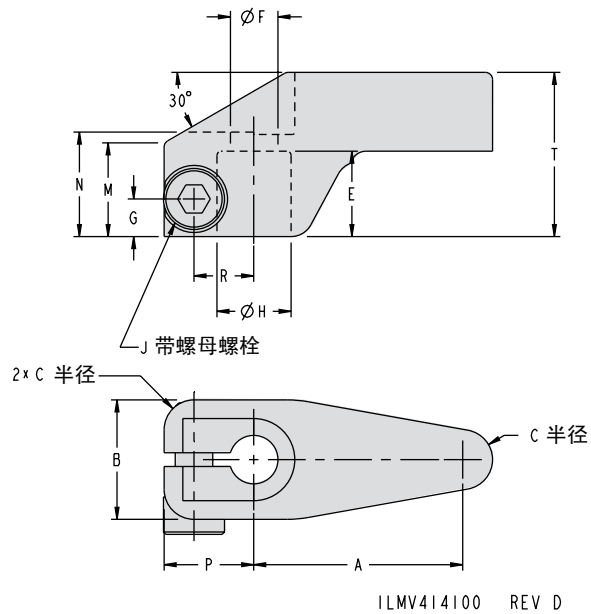
注：请参阅C-29 (TuffCam™ C-2) 页建议的时钟 特性螺纹孔位置。

标准旋臂尺寸

型号	缸夹紧力 (kN)	A	B	C	D	E	F	G	H	J	K	L	R	T
44-1011-00	2	27	9.5	4.5	6.5	12.5	7	7	11.13 - 11.18	M6 x 1.0	M6 x 1	22	9.5	16
44-1015-00	4.9	38	12.5	6.5	7.5	18	10.5	8	15.89 - 15.94	M8 x 1.25	M8 x 1.25	25	12.7	22
44-1022-00	11.5	51	17.5	9.5	12	25.5	13.5	9.5	22.24 - 22.29	M10 x 1.25	M10 x 1.5	25	16.6	32
44-1031-01	22	63.5	25.5	14.5	16	36.5	16.5	12.5	31.75 - 31.80	M16 x 1.5	M12 x 1.75	25	24.6	44.5

所有尺寸均毫米。

TuffCam™旋转缸时钟特性锥形孔位置细节在C-2页，标准旋转缸的在C-29页。



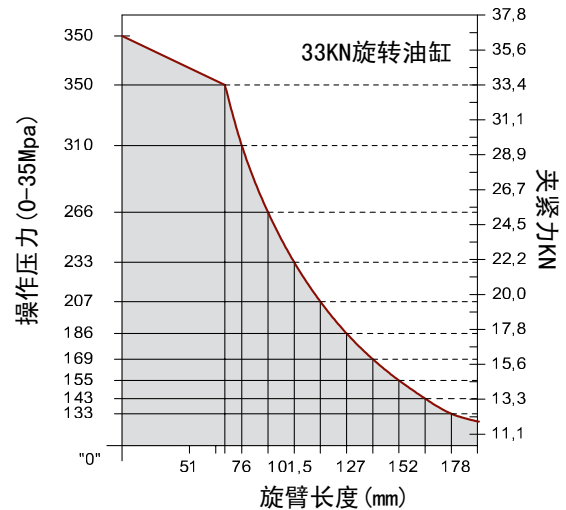
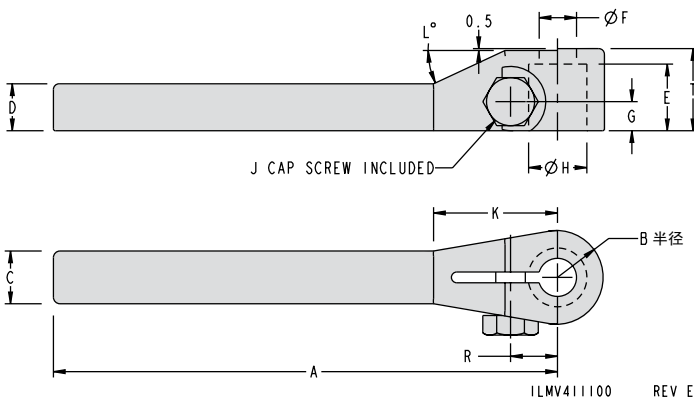
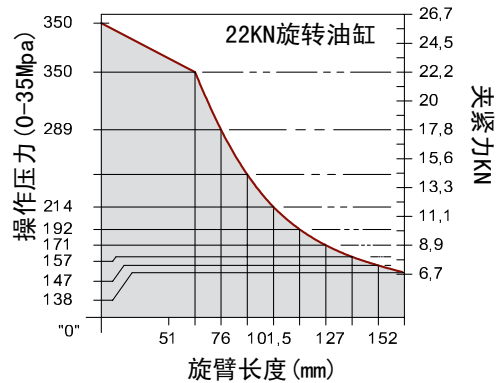
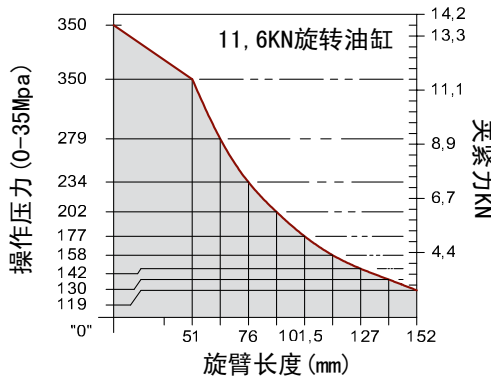
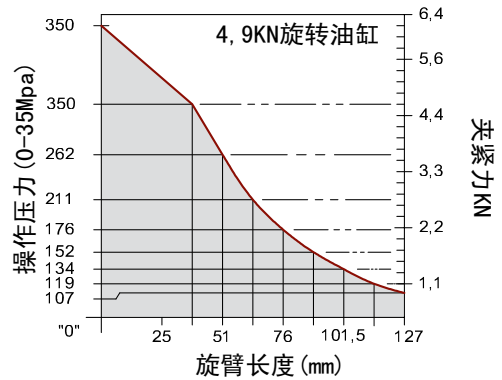
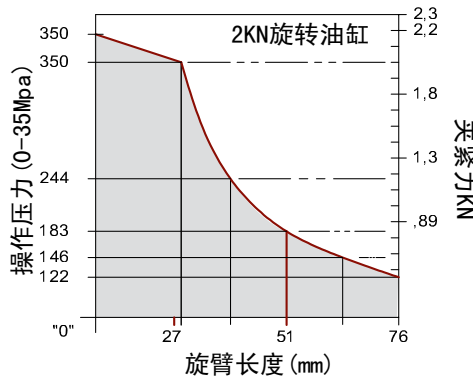
抬升臂尺寸

型号	缸夹紧力 (kN)	A	B	C	E	F	G	H	J	M	N	P	R	T
44-1411-00	2	32	19	5	12.5	7	6.5	11.13 - 11.18	M6 x 1	12.5	16	16	9.5	25.5
44-1415-00	4.9	44.5	25.5	6.5	18	10.5	8	15.89 - 15.94	M8 x 1.25	19	22	19	12.5	35
44-1422-00	11.6	63.5	35	9.5	25.5	13.5	9.5	22.24 - 22.29	M10 x 1.25	26.5	32	26	16.5	51
44-1431-01	22	76	51	14.3	36.6	16.7	13.5	31.75 - 31.80	M16 x 1.5	38	44.5	38	24.6	70



旋转缸旋臂

臂长压力限制延长臂尺寸



ILMV415100 REV B



所有尺寸均为mm。

按照上述臂长限制。

TuffCam™ 旋转缸时钟特性锥形孔位置
细节在C-2页，标准旋转缸的在C-29页。

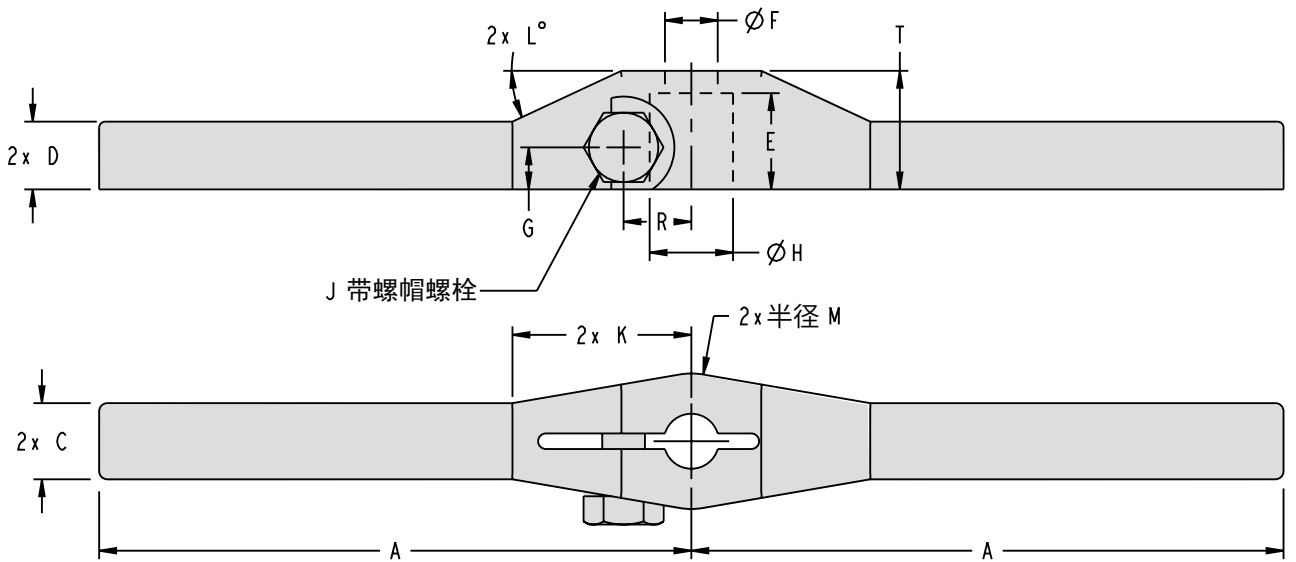
0-3

延长臂尺寸

型号	缸夹紧力 (kN)	A	B	C	D	E	F	G	H	J	K	L	R	T
44-1111-00	2	82.5	9.5	10.5	8.5	12.5	7	7	11.13-11.18	M6 x 1.00	26	22	9.5	16
44-1115-00	4.9	136.5	12.5	14.5	12.5	18	10.5	8	15.89-15.94	M8 x 1.25	33	25	12.7	22
44-1122-00	11.6	162	17.5	19	16	25.5	13.5	9.5	22.24-22.29	M10 x 1.25	50.5	25	16.6	32
44-1131-01	22	165	25.5	28.5	19	36.5	16.5	12.5	31.75-31.80	M16 x 1.50	70.5	25	24.6	44.5

旋转缸旋臂

双头旋臂尺寸



ILMV412100 REV E



双头旋臂尺寸

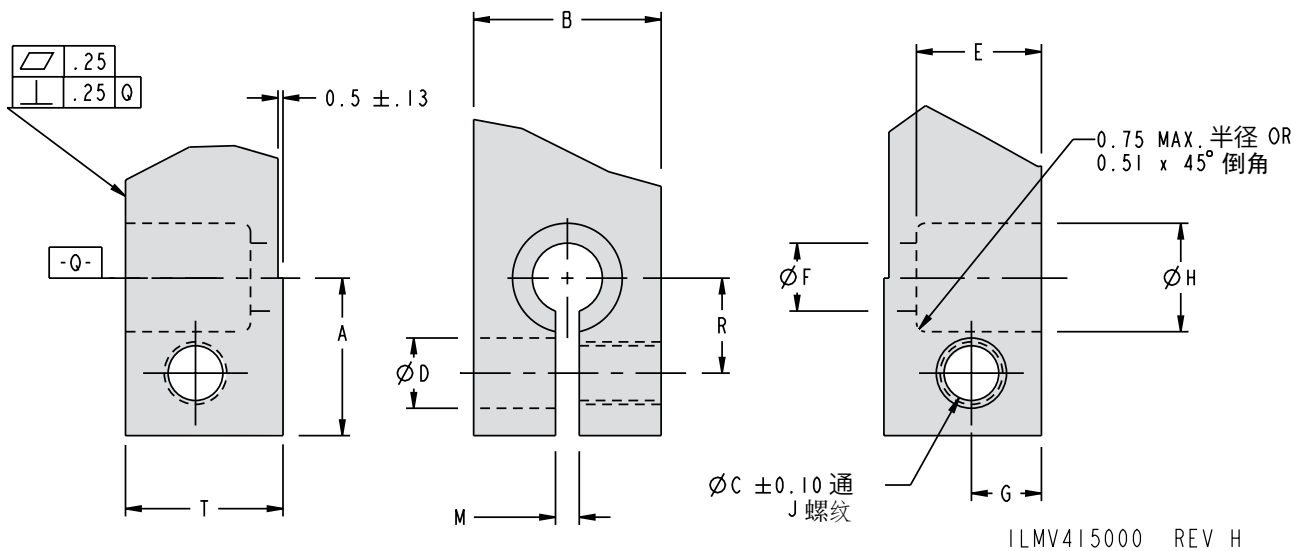
型号	缸夹紧力 (kN)	A	C	D	E	F	G	H	J	K	L	M	R	T
44-1211-00	2	70	10.5	8.5	12.5	7	7	11.13 - 11.18	M6 x 1	26	22	9.5	9.5	16
44-1215-00	4.9	111	14.5	12.5	18	10.5	8	15.89 - 15.94	M8 x 1.25	33	25	12.5	12.7	22
44-1222-00	11.6	136	19	16	25.5	13.5	9.5	22.24 - 22.29	M10 x 1.25	50.5	25	17.5	16.6	32
44-1231-01	22	140	28.5	19	36.5	16.5	12.5	31.75 - 31.80	M16 x 1.5	70.5	25	25.5	24.6	44.5

所有尺寸均毫米。

0-4



自制旋臂尺寸



用户必须钻螺孔使压臂在应用的适当位置/定位。

压臂时钟特性，见C-29页上详细的压臂时钟特性螺孔。

用户制造的旋臂尺寸

旋转臂 型号	缸夹紧力 (kN)	A	B	C	D	E	F	G	H	J	M	R	T
自制旋臂的建议加工尺寸													
44-1011-00	2	16.00	19	5	6.4	12.7	7	7	11.151	M6 x 1.00-6H	2.4	9.52	16
44-1111-00													
44-1211-00													
44-1411-00													
44-1015-00	4.9	19.05	25.5	6.8	8.5	18.03	11	7.8	15.913	M8 x 1.25-6H	2.9	12.7	22
44-1115-00													
44-1215-00													
44-1415-00													
44-1022-00	11.6	26.16	35	8.8	10.5	25.4	13.5	9.4	22.263	M10 x 1.25-6H	2.9	16.67	32
44-1122-00													
44-1222-00													
44-1422-00													
44-1031-01	22	38.10	51	14.5	16.5	36.5	17	12.7	31.775	M16 x 1.5-6H	2.9	24.61	44.5
44-1131-01													
44-1231-01													
44-1431-01													

所有尺寸均为毫米。

注：按照0-3页上的臂长限制。