

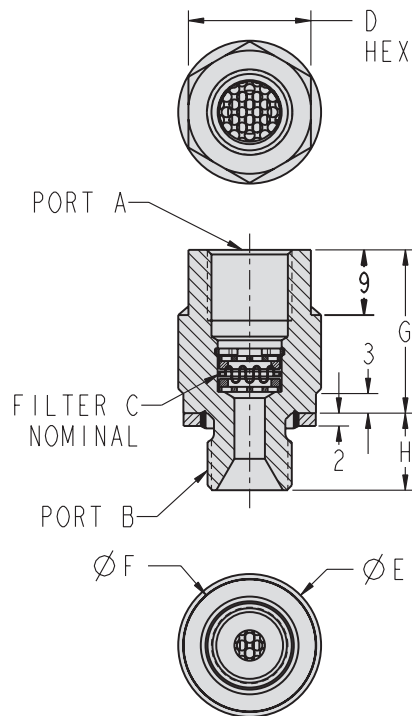
# Accessories

## In-line filters and Spherical Contact Points



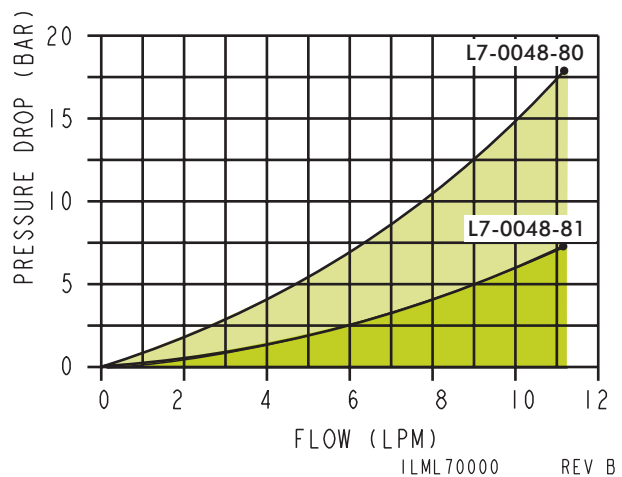
### In-line Filter

- Available in 2 filter ratings; 10 and 25 Micron.
- Filters up to 350 bar (35 MPa) in either flow direction.
- Compact in-line design for maximum flexibility.
- Protect sensitive valves and devices.
- Serviceable for cleaning or filter replacement.
- Maximum flow of 11.3 l/m.
- Maximum ambient temperature of 93° C.

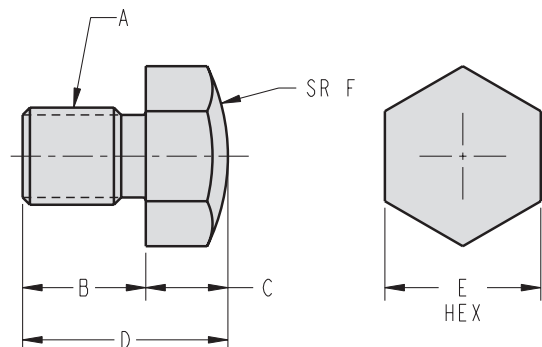


### In-line Filters

Model No.	L7-0048-80	L7-0048-81
A	G 1/4	G 1/4
B	G 1/4	G 1/4
C	10 Micron	25 Micron
D	19	19
E	22.2	22.2
F	18.8	18.8
G	25.4	25.4
H	11.9	11.9



### Spherical Contact Points



Contact points are through hardened to Rc 46-50

### Spherical Contact Points

Model No.	L4-2106-00	L4-2108-00	L4-2110-00	L4-2112-00	L4-2116-00	L4-2120-00
A	M6 X 1.00	M8 X 1.25	M10 X 1.5	M12 X 1.75	M16 X 2	M20 X 2.5
B	9	10	12	15	20	25
C	8	8	10	10	10	10
D	17	18	22	25	30	35
E	10	13	17	19	24	30
F	12	16	22	25	50	60

ILML40001 REV A



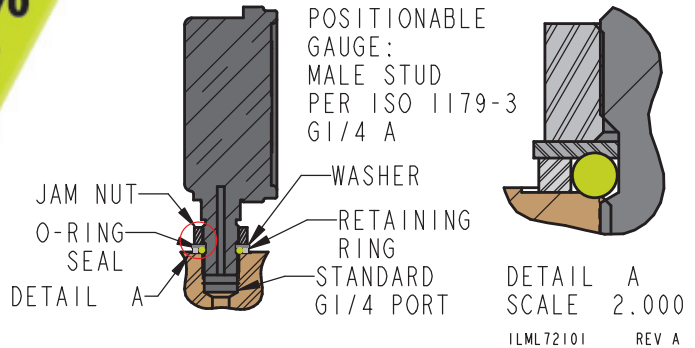


# First Ever

## Fully Positionable and Re-adjustable G1/4 Ported Gauges

- 360° adjustable mounting for perfect orientation.
- Install directly into any G 1/4 port, no special port required.
- No one time use crush rings, no tapered fittings or sealing tape needed.
- Reusable O-ring seal
- Liquid filled analog gauge
- ANSI standard B40.1 Grade B Liquid filled.
- Safety Glass window

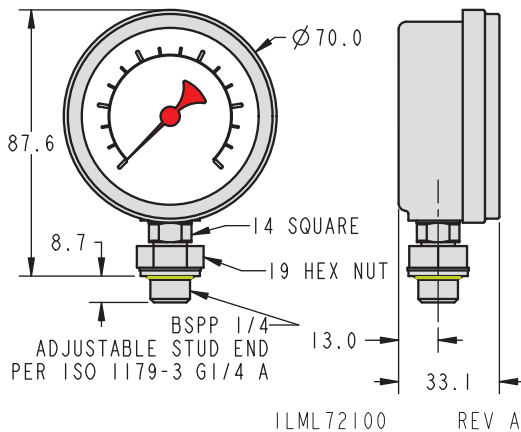
To extend the life of Pressure Gauges, run your system at no more than **75%** of the gauge scale



I-2

### Standard Gauge

Model No.	L7-2212-00
Pressure Range	0 -10 MPa (100 bar)



### Back Mount Gauge

Model No.	L7-2222-00	L7-2122-00
Pressure Range	0 -10 MPa (100 bar)	0 -10 MPa (100 bar)
A	70	42.2
B	52	47.2
C	33.5	28

