

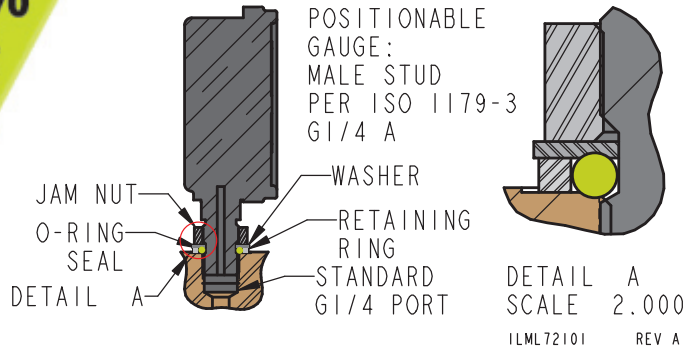


First Ever

Fully Positionable and Re-adjustable G1/4 Ported Gauges

- 360° adjustable mounting for perfect orientation.
- Install directly into any G 1/4 port, no special port required.
- No one time use crush rings, no tapered fittings or sealing tape needed.
- Reusable O-ring seal
- Liquid filled analog gauge
- ANSI standard B40.1 Grade B Liquid filled.
- Safety Glass window

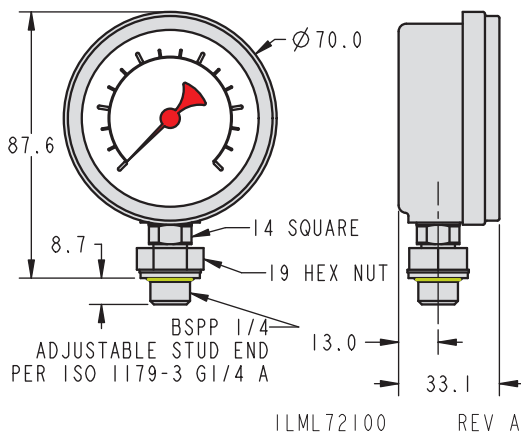
To extend the life of Pressure Gauges, run your system at no more than **75%** of the gauge scale



I-2

Standard Gauge

| Model No. | L7-2212-00 |
|----------------|---------------------|
| Pressure Range | 0 -10 MPa (100 bar) |



Back Mount Gauge

| Model No. | L7-2222-00 | L7-2122-00 |
|----------------|---------------------|---------------------|
| Pressure Range | 0 -10 MPa (100 bar) | 0 -10 MPa (100 bar) |
| A | 70 | 42.2 |
| B | 52 | 47.2 |
| C | 33.5 | 28 |

