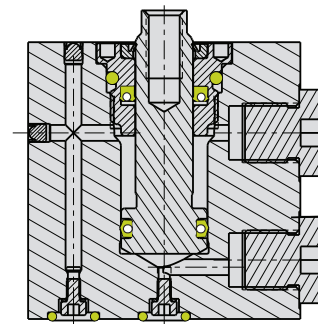


Cylinders

Combination Block

Double Acting Bottom Manifold and Standard Side Porting

- Available in 5 sizes with 2 stroke lengths for each size.
- Flush top design makes this cylinder ideal for use in close push or pull applications.
- Easy manifold mount (O-ring) to push or pull from the fixture surface.
- Standard G 1/4 side ports provide easy access to standard fitting alternate ports.
- End manifold provides an alternative to other side manifold block cylinders.
- Stock end attachments available or make your own.



ILML21400 REV B



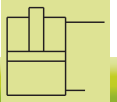
Double Acting Combination Block

Specifications

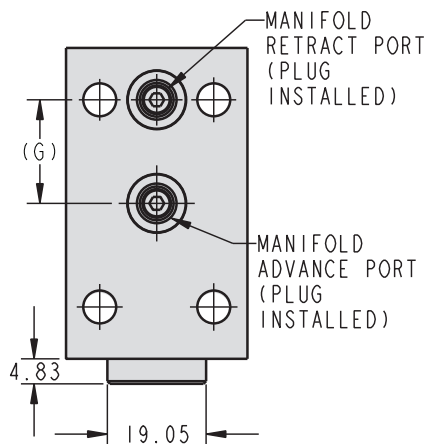
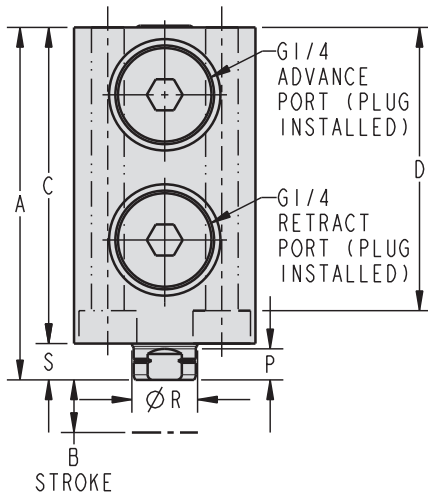
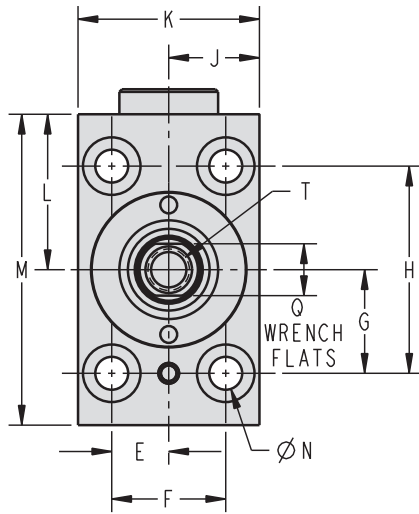
Model No.	L2-1121-00	L2-1121-01	L2-1121-02	L2-1121-03	L2-1121-04	L2-1121-05	L2-1121-06	L2-1121-07	L2-1121-08	L2-1121-09
Double Acting (D/A) Cylinders, actuated hydraulically both directions.										
Clamping Capacity* (kN) Extend	2.0	2.0	3.6	3.6	5.5	5.5	9.4	9.4	14.2	14.2
Clamping Capacity* (kN) Retract	1.1	1.1	2.2	2.2	3.6	3.6	5.8	5.8	8.7	8.7
Stroke (mm)	16	50	20	50	25	50	25	50	25	50
Body Size (mm)	35 x 60	35 x 60	45 x 65	45 x 65	55 x 75	55 x 75	63 x 85	63 x 85	75 x 100	75 x 100
Minimum Length (mm)	68	102	71	101	85	110	89	114	100	125
Piston Area (cm ²) Extend	2.9	2.9	5.1	5.1	7.9	7.9	13.4	13.4	20.3	20.3
Piston Area (cm ²) Retract	1.6	1.6	3.1	3.1	5.1	5.1	8.3	8.3	12.4	12.4
Oil Capacity (cm ³) Extend	4.6	14.3	10.1	25.3	19.8	39.6	33.5	66.9	50.7	101.3
Oil Capacity (cm ³) Retract	2.5	7.9	6.2	15.4	12.7	25.3	20.8	41.6	30.9	61.8

* Cylinder capacities are listed at 7 MPa (70 bar) maximum operating pressure. Minimum operating pressure is 1 MPa (10 bar). The output force is adjustable by varying hydraulic system pressure. To determine the approximate output force for your application, multiply the Piston Area times Your System Operating Pressure. Actual force may vary slightly due to friction loss, seal and wiper drag.





Dimensions

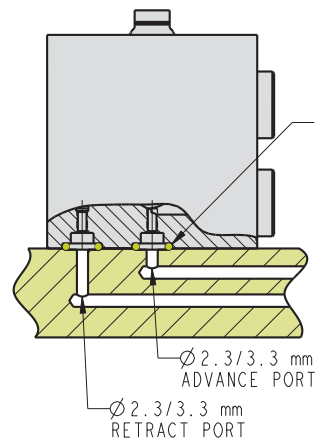


ILML21401 REV B

Model No.	L2-1121-00	L2-1121-01	L2-1121-02	L2-1121-03	L2-1121-04
Double Acting (D/A) Cylinders, actuated hydraulically both directions.					
A	68	102	71	101	85
B	16	50	20	50	25
C	61	95	64	94	75
D	54.6	88.6	55.5	85.5	64.5
E	11	11	15	15	17.5
F	22	22	30	30	35
G	20	20	25	25	27.5
H	40	40	50	50	55
J	17.5	17.5	22.5	22.5	27.5
K	35	35	45	45	55
L	30	30	32.5	32.5	37.5
M	60	60	65	65	75
N	6.3	6.3	8.5	8.5	10.5
P	6	6	6	6	9
Q	10	10	13	13	16
R	12.7	12.7	15.8	15.8	19
S	7	7	7	7	10
T	M8 x 1.25 x 15	M8 x 1.25 x 15	M10 x 1.5 x 15	M10 x 1.5 x 15	M12 x 1.75 x 15

Model No.	L2-1121-05	L2-1121-06	L2-1121-07	L2-1121-08	L2-1121-09
Double Acting (D/A) Cylinders, actuated hydraulically both directions.					
A	110	89	114	100	125
B	50	25	50	25	50
C	100	79	104	90	115
D	89.5	68.5	93.5	77	102
E	17.5	20	20	22.5	22.5
F	35	40	40	45	45
G	27.5	31.5	31.5	38	38
H	55	63	63	76	76
J	27.5	31.5	31.5	37.5	37.5
K	55	63	63	75	75
L	37.5	42.5	42.5	50	50
M	75	85	85	100	100
N	10.5	10.5	10.5	13	13
P	9	9	9	9	9
Q	16	22	22	27	27
R	19	25.4	25.4	31.7	31.7
S	10	10	10	10	10
T	12 x 1.75 x 15	M16 x 2 x 25	M16 x 2 x 25	M20 x 2.5 x 30	M20 x 2.5 x 30

G-2



Combination Block Cylinder Feed Holes

ILML21402 REV A

For proper sealing, the mating surface must be flat within 0.08 mm with a maximum surface roughness of 1.6 μm R_a

