

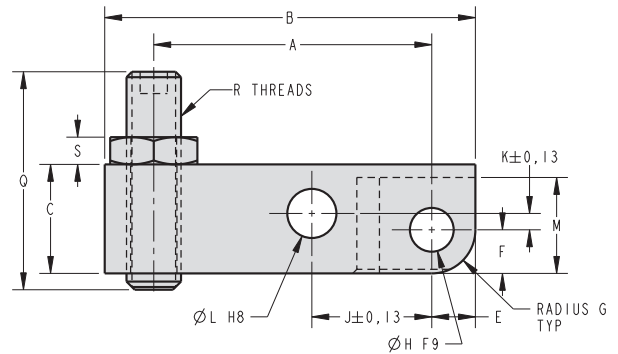
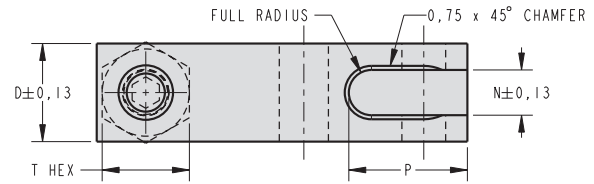
Link Clamp Levers

Dimensions

Standard Length Lever					
Model No.	L9-1625-01	L9-1632-01	L9-1640-01	L9-1650-01	L9-1663-01
A	35	41.5	51	59	72
B	46	54.5	68	80	97
C	14	18	20	25	30
D	12	14	18	22	26
E	5	6	8	10	12
F	5	6	8	10	12
G	5	6	8	10	12
H	5	6	8	10	12
J	15	18	22	26.5	32
K	3	5	3	4	5
L	6	7	9	11	13
M	11	13.2	17.6	22	26.4
N	5.3	6.3	8.3	10.3	12.3
P	13.65	16.35	21.75	27.15	32.55
Q	25	35	40	50	60
R	M6 x 1	M8 x 1.25	M10 x 1.5	M12 x 1.75	M16 x 2.0
S	3.2	4	5	6	8
T	10	13	16	18	24

Extended Length Lever (without Tapped Hole)					
Model No.	L9-1625-02	L9-1632-02	L9-1640-02	L9-1650-02	L9-1663-02
A	N/A	N/A	N/A	N/A	N/A
B	66	78	97	112.5	137
C	14	18	20	25	30
D	12	14	18	22	26
E	5	6	8	10	12
F	5	6	8	10	12
G	5	6	8	10	12
H	5	6	8	10	12
J	15	18	22	26.5	32
K	3	5	3	4	5
L	6	7	9	11	13
M	11	13.2	17.6	22	26.4
N	5.3	6.3	8.3	10.3	12.3
P	13.65	16.35	21.75	27.15	32.55
Q	N/A	N/A	N/A	N/A	N/A
R	N/A	N/A	N/A	N/A	N/A
S	N/A	N/A	N/A	N/A	N/A
T	N/A	N/A	N/A	N/A	N/A

Work Support Length Lever (clamps over centerline of a work support)					
Model No.	L9-1625-03	L9-1632-03	L9-1640-03	L9-1650-03	L9-1663-03
A	46.5	50.5	61.5	70.5	83
B	57.5	63.5	78.5	91.5	108
C	14	18	20	25	30
D	12	14	18	22	26
E	5	6	8	10	12
F	5	6	8	10	12
G	5	6	8	10	12
H	5	6	8	10	12
J	15	18	22	26.5	32
K	3	5	3	4	5
L	6	7	9	11	13
M	11	13.2	17.6	22	26.4
N	5.3	6.3	8.3	10.3	12.3
P	13.65	16.35	21.75	27.15	32.55
Q	25	35	40	50	60
R	M6 x 1	M8 x 1.25	M10 x 1.5	M12 x 1.75	M16 x 2.0
S	3.2	4	5	6	8
T	10	13	16	18	24



ILML16003 REV A

F-1



Standard Length Levers



Extended Length Levers



Work Support Length Levers



Link Clamp Levers



Clamping Force Tables

L1-6025-00										
Operating Pressure (MPa)	Cylinder Force (kN)	Clamping Force (kN)								Min Lever Length "L" (mm)
		Lever Length "L" (mm)								
		24	35	40	46.5	50	61	80	100	
10.0	4.9							1.0	0.8	74
9.0	4.4						1.3	0.9	0.7	55
8.0	3.9				1.7	1.5	1.2	0.8	0.6	42
7.0	3.4		2.4	1.9	1.5	1.4	1.0	0.7	0.6	34
6.0	2.9		2.0	1.6	1.3	1.2	0.9	0.6	0.5	29
5.0	2.5		1.7	1.4	1.1	1.0	0.7	0.5	0.4	25
4.0	2.0	3.0	1.4	1.1	0.9	0.8	0.6	0.4	0.3	24
3.0	1.5	2.3	1.0	0.8	0.6	0.6	0.4	0.3	0.2	24
2.0	1.0	1.5	0.7	0.5	0.4	0.4	0.3	0.2	0.2	24
1.0	0.5	0.8	0.3	0.3	0.2	0.2	0.1	0.1	0.1	24
Max Op. Pressure (MPa)		4.8	7.2	7.9	8.5	8.7	9.3	10.0	10.0	

ILML16005-25 REV B

L1-6032-00										
Operating Pressure (MPa)	Cylinder Force (kN)	Clamping Force (kN)								Min Lever Length "L" (mm)
		Lever Length "L" (mm)								
		29	35	41.5	50.5	60	72	100	120	
10.0	8.0							1.6	1.3	90
9.0	7.2						2.0	1.5	1.2	62
8.0	6.4				3.3	2.5	1.8	1.3	1.0	49
7.0	5.6		4.0	2.9	2.2	1.6	1.1	0.9	0.4	40
6.0	4.8		4.7	3.4	2.5	1.9	1.3	1.0	0.8	34
5.0	4.0		3.9	2.8	2.0	1.6	1.1	0.8	0.7	30
4.0	3.2	4.8	3.1	2.3	1.6	1.3	0.9	0.6	0.5	29
3.0	2.4	3.6	2.4	1.7	1.2	1.0	0.7	0.5	0.4	29
2.0	1.6	2.4	1.6	1.1	0.8	0.6	0.4	0.3	0.3	29
1.0	0.8	1.2	0.8	0.6	0.4	0.3	0.2	0.2	0.1	29
Max Op. Pressure (MPa)		4.9	6.2	7.2	8.1	8.8	9.4	10.0	10.0	

ILML16005-32 REV C

L1-6040-00										
Operating Pressure (MPa)	Cylinder Force (kN)	Clamping Force (kN)								Min Lever Length "L" (mm)
		Lever Length "L" (mm)								
		36	42	51	61.5	80	89	120	140	
10.0	12.6							2.6	2.2	109
9.0	11.3					3.9	3.1	2.3	1.9	78
8.0	10.1				5.2	3.5	2.7	2.1	1.7	60
7.0	8.8			6.1	4.5	3.1	2.4	1.8	1.5	49
6.0	7.5		7.6	5.3	3.9	2.6	2.0	1.6	1.3	42
5.0	6.3	9.1	6.4	4.4	3.2	2.2	1.7	1.3	1.1	36
4.0	5.0	7.3	5.1	3.5	2.6	1.8	1.4	1.0	0.9	36
3.0	3.8	5.5	3.8	2.6	1.9	1.3	1.0	0.8	0.6	36
2.0	2.5	3.6	2.5	1.8	1.3	0.9	0.7	0.5	0.4	36
1.0	1.3	1.8	1.3	0.9	0.6	0.4	0.3	0.3	0.2	36
Max Op. Pressure (MPa)		5.0	6.1	7.2	8.1	9.1	9.4	10.0	10.0	

ILML16005-40 REV C

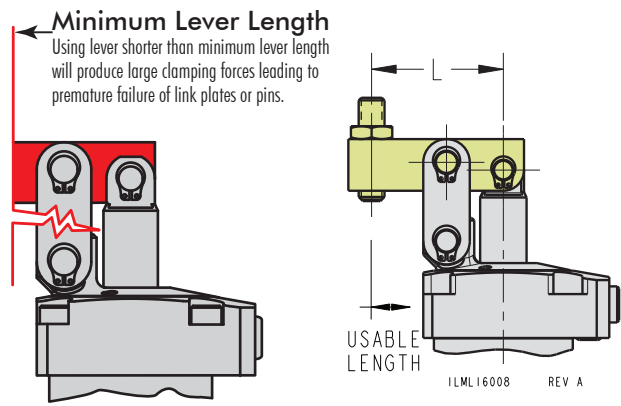
L1-6050-00										
Operating Pressure (MPa)	Cylinder Force (kN)	Clamping Force (kN)								Min Lever Length "L" (mm)
		Lever Length "L" (mm)								
		43.5	50	59	70.5	90	102.5	130	150	
10.0	19.6							4.6	3.9	116
9.0	17.7					6.8	5.0	4.2	3.5	86
8.0	15.7				8.7	6.0	4.4	3.7	3.1	68
7.0	13.7			10.3	7.6	5.3	3.9	3.2	2.7	57
6.0	11.8		12.2	8.8	6.5	4.5	3.3	2.8	2.3	49
5.0	9.8	14.1	10.2	7.4	5.4	3.8	2.8	2.3	1.9	43.5
4.0	7.9	11.3	8.1	5.9	4.4	3.0	2.2	1.9	1.6	43.5
3.0	5.9	8.4	6.1	4.4	3.3	2.3	1.7	1.4	1.2	43.5
2.0	3.9	5.6	4.1	2.9	2.2	1.5	1.1	0.9	0.8	43.5
1.0	2.0	2.8	2.0	1.5	1.1	0.8	0.6	0.5	0.4	43.5
Max Op. Pressure (MPa)		5.2	6.2	7.2	8.1	9.1	9.6	10.0	10.0	

ILML16005-50 REV C

L1-6063-00										
Operating Pressure (MPa)	Cylinder Force (kN)	Clamping Force (kN)								Min Lever Length "L" (mm)
		Lever Length "L" (mm)								
		53	60	72	83	100	125	140	160	
10.0	31.2							9.4	7.9	145
9.0	28.1							10.8	8.3	106
8.0	24.9							10.8	8.3	84
7.0	21.8			16.1	12.6	9.4	7.3	6.2	5.0	69
6.0	18.7		19.7	13.8	10.8	8.1	6.3	5.3	4.3	59
5.0	15.6	21.9	16.4	11.5	9.0	6.7	5.2	4.4	3.6	53
4.0	12.5	17.5	13.1	9.2	7.2	5.4	4.2	3.5	2.9	53
3.0	9.4	13.1	9.8	6.9	5.4	4.0	3.1	2.6	2.2	53
2.0	6.2	8.7	6.6	4.6	3.6	2.7	2.1	1.8	1.4	53
1.0	3.1	4.4	3.3	2.3	1.8	1.3	1.0	0.9	0.7	53
Max Op. Pressure (MPa)		5.2	6.1	7.2	7.9	8.7	9.5	9.9	10.0	

ILML16005-63 REV C

Indicates Non-Usable Range



How to Use the Clamping Force Tables

- 1) Start by choosing the lever length you need for your application.
- 2) Then move along the line and select the clamping force and operating pressure or operating pressure and clamping force needed.

Example: Using a L1-6025-00 with a 35 mm lever; the clamping force would be 2.0 kN at 6.0 MPa

L1-6025-00										
Operating Pressure (MPa)	Cylinder Force (kN)	Clamping Force (kN)								Min Lever Length "L" (mm)
		Lever Length "L" (mm)								
		24	35	40	46.5	50	61	80	100	
10.0	4.9							1.0	0.8	74
9.0	4.4						1.3	0.9	0.7	55
8.0	3.9				1.7	1.5	1.2	0.8	0.6	42
7.0	3.4		2.4	1.9	1.5	1.4	1.0	0.7	0.6	34
6.0	2.9		2.0	1.6	1.3	1.2	0.9	0.6	0.5	29
5.0	2.5		1.7	1.4	1.1	1.0	0.7	0.5	0.4	25
4.0	2.0	3.0	1.4	1.1	0.9	0.8	0.6	0.4	0.3	24
3.0	1.5	2.3	1.0	0.8	0.6	0.6	0.4	0.3	0.2	24
2.0	1.0	1.5	0.7	0.5	0.4	0.4	0.3	0.2	0.2	24
1.0	0.5	0.8	0.3	0.3	0.2	0.2	0.1	0.1	0.1	24
Max Op. Pressure (MPa)		4.8	7.2	7.9	8.5	8.7	9.3	10.0	10.0	

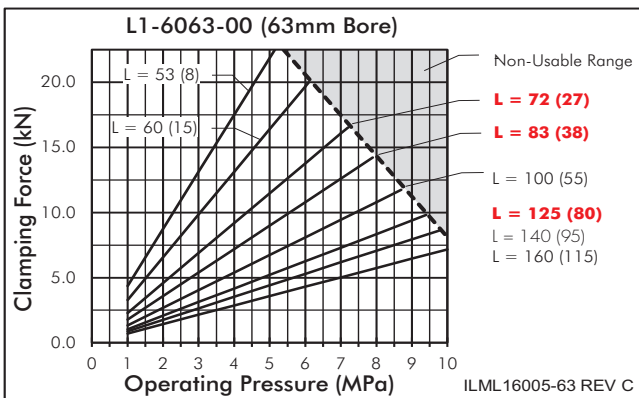
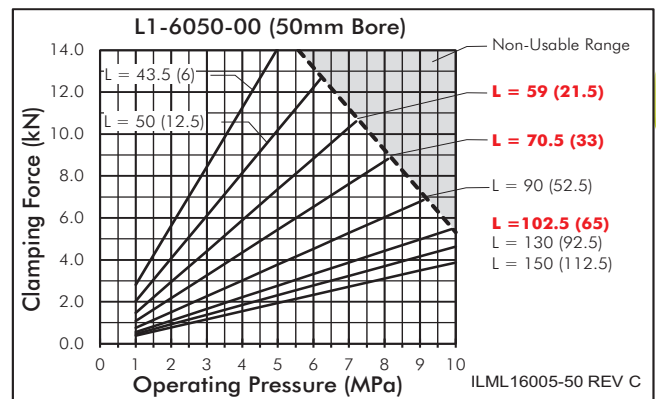
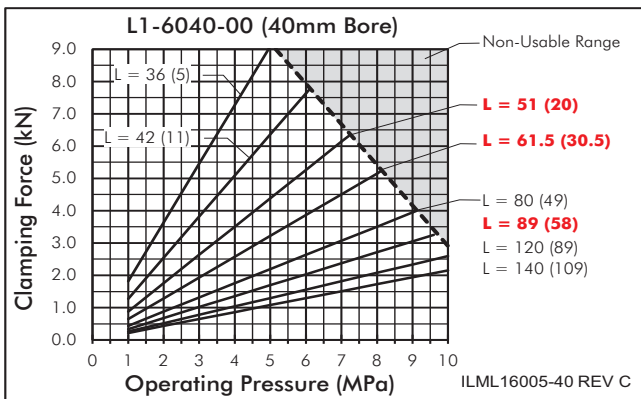
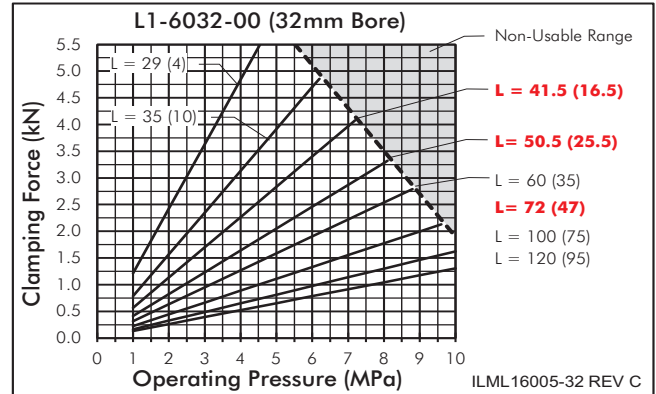
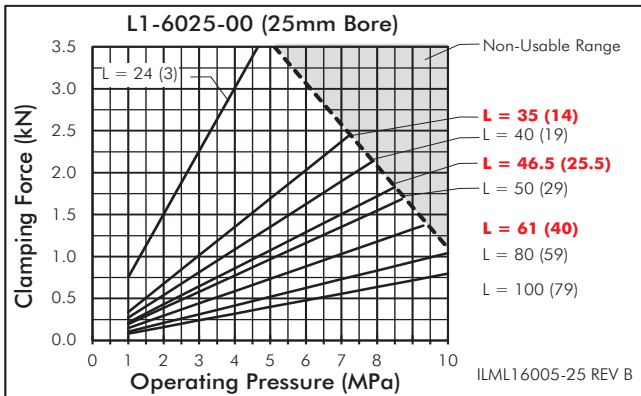
ILML16006 REV A



Link Clamp Levers

Clamping Force Graphs

F-3



- The tables and graphs show the relationship between lever length, operating pressure and clamping force.
- The lever lengths shown in parenthesis are the usable length from the edge of the clamp body to the contact bolt.
- Tables include maximum operating pressure associated with the arm length shown in the header rows of the table.
- The column on the right of the table is the minimum lever length allowed at the associated operating pressure.
- Operating the clamp in the non-usable range will damage the clamp and void product warranty.

How to Use the Clamping Force Graphs

- 1) Start by choosing the lever length you need for your application.
- 2) Then move along the line and select the clamping force and operating pressure or operating pressure and clamping force needed.

Example: Using a L1-6025-00 with a 35 mm lever (14 mm usable length); the clamping force would be 2.0 kN at 6.0 MPa

