

# TuffCam™ 7 MPa Swing Clamp Arms

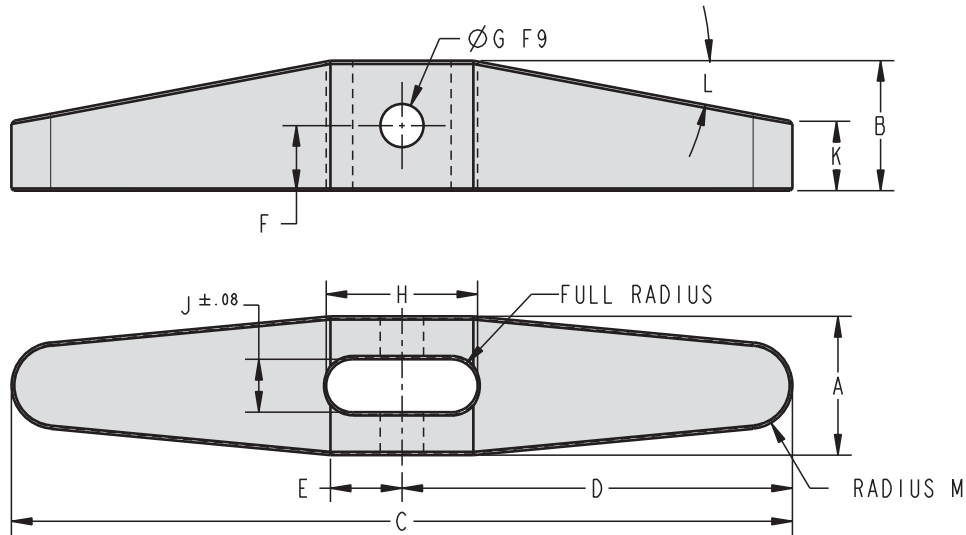
Double Ended Rocker Arm for Clevis Models

# NEW

## TuffCam™ 7 MPa Double Ended Rocker Arm

- Purchase arms using Model Numbers in the table.
- Dimensions to make your own.

D-6



ILML91403 REV A

### 7 MPa Double Ended Rocker Arm Dimensions

Model No.	L9-1425-03	L9-1432-03	L9-1440-03	L9-1450-03	L9-1463-03	L9-1480-03
Cylinder Capacity (kN)	2.2	3.8	6.1	9.4	14.7	24.1
Bore Size (mm)	25	32	40	50	63	80
A	20	26	32	38	50	62
B	18	24	30	36	48	58
C	120	150	180	210	240	300
D	60	75	90	105	120	150
E	11.25	13.5	16.5	21	27	33.75
F	9	12	15	18	24	29
G	6	8	10	12	16	20
H	22.5	28.1	34.9	44.5	58.5	73
J	8.2	10.2	12.2	15.2	20.2	24.2
K	10	13	16	19	25	31
L	9	10	11	11	14	13
M	6	8	10	12	16	20

ILML91403 REV A



# TuffCam™ 7 MPa Swing Clamp

Concept

## Versatile Double Acting Clevis Plunger Swing Clamps

- TuffCam™ Top Flange Swing Clamps and Clevis Plunger Bottom Flange Swing Clamps working together.
- Adjustable clamping force.
- Use double ended Rocker Arms to apply equal force on two surfaces of different heights.
- Allowable arm travel for work piece deviation is  $\pm 10^\circ$
- Six standard arm positions available in  $30^\circ$  increments.
- Clamp position repeatability is  $\pm 0.25^\circ$  and Swing angle at  $90^\circ \pm 3^\circ$
- Can be manifold mounted or plumbed.

D-7

