

Combination Sequence/PRV Block



U.S. Patent Nos. 6,581,628
5,931,182

Efficient Space Saving Combination Sequence/PRV Block

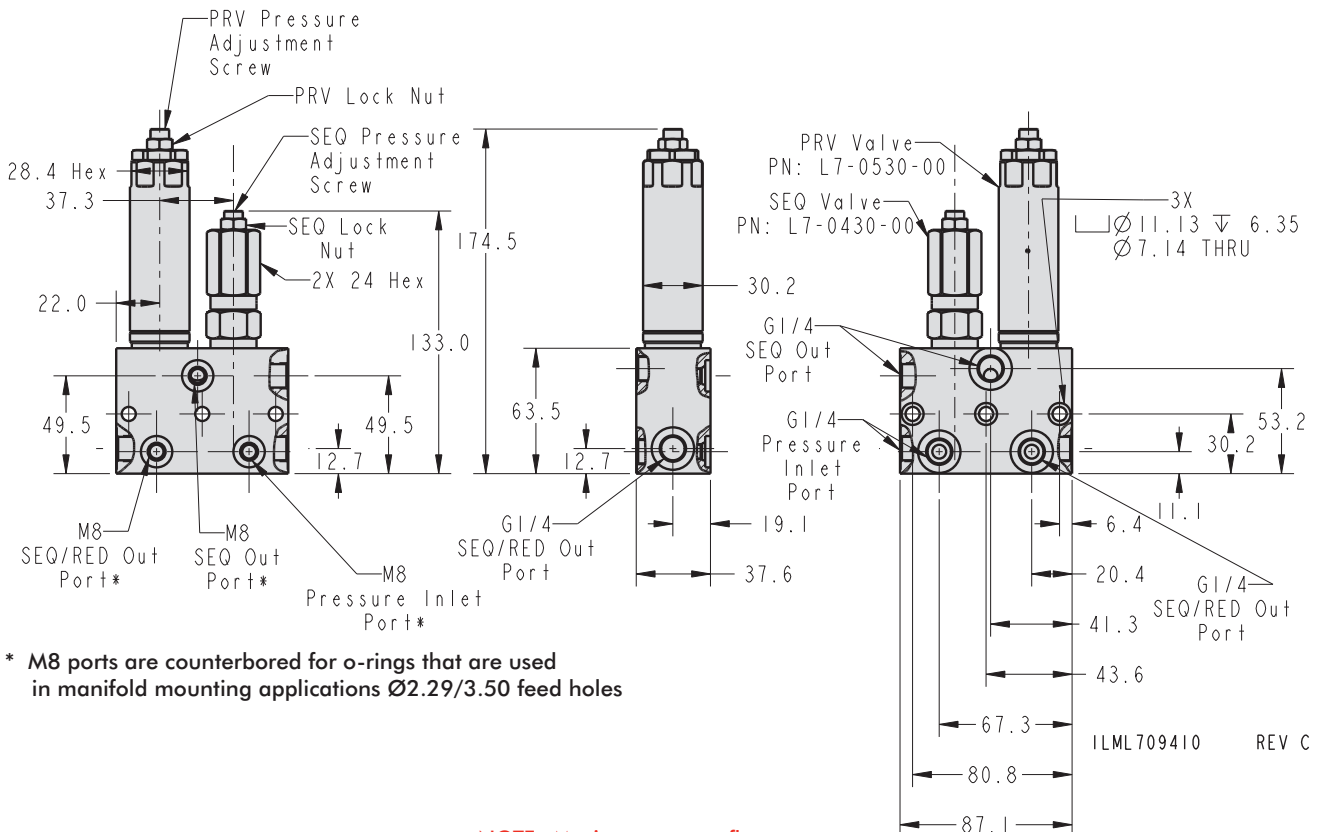
- Control both timing and pressure with this dual purpose combination block.
- Common inlet port feeds both sequence and reducing valves.
- Use with single or double acting devices.
- Block includes standard Sequence and PRV cartridges.
- Direct acting poppet style valve construction.
- Sequence Pressure adjustment range: 2.0 to 6.2 MPa (20 to 62 bar), PRV adjustment range: 1.0 - 6.2 MPa (10 to 62 bar).
- Elements spaced to accommodate Gauge for setup or trouble shooting.
- Recommended Filtration: 25 Micron (NOM) / 40 Micron (ABS) (minimum).

Combination SEQ/PRV

Assembly Model	L7-0818-01
SEQ Valve	L7-0430-00
SEQ Valve Set Pressure Range	2.0 - 6.2 MPa
PRV Model	L7-0530-00
PRV Set Pressure	1.0 - 6.2 MPa
ILML709410	

For proper sealing, the mating surface must be flat within 0.08 mm with a maximum surface roughness of 1.6 μm R_a

H-4



* M8 ports are counterbored for o-rings that are used in manifold mounting applications $\text{Ø}2.29/3.50$ feed holes

NOTE: Maximum system flow rate is 5.7 l/m unless otherwise noted.

Excess flow voids warranty.

