

# Valves

## Unclamp Delay Valve

### Temporarily Hold Parts During Unclamp

- Set delay to control unclamp in single acting devices. Use in single or double acting systems.
- Eliminate workpiece movement, caused by backpressure, when unclamping over a work support.
- Normally open valve allows free fluid flow through the valve during clamping.
- Does not require "B" pilot line to open.
- Stainless steel internal components for superior corrosion resistance.

# NEW



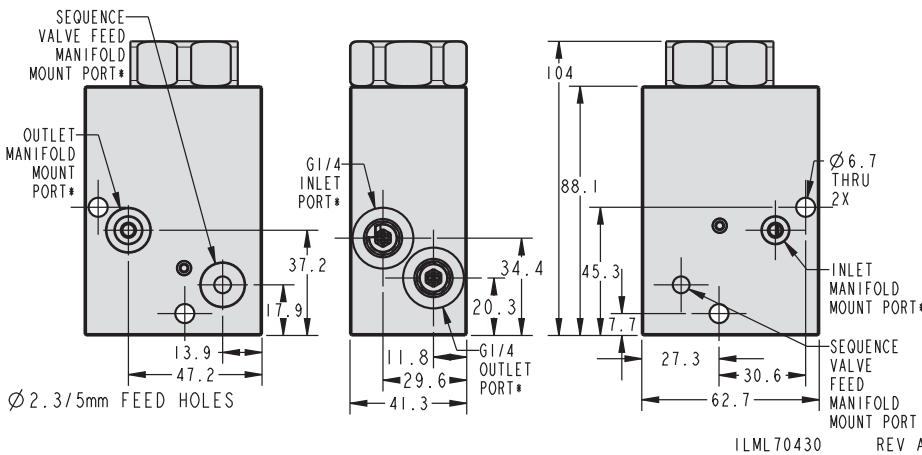
Patent Pending

### Unclamp Delay Valve

Model No.*	L7-0431-00*
Set Pressure Range**	2 to 10 MPa
Time Delay Preset*** (sec)	3 to 7 seconds Using ISO 32 Fluid
Filtration Included	25 micron All Ports
Max Flow	11.4 l/min
Crossover plate, L9-3197-00, needed when using as a standalone manifold mount valve.	

For proper sealing, the mating surface must be flat within 0.08 mm with a maximum surface roughness of 1.6  $\mu\text{m}$  R<sub>a</sub>

**Operation:** The VektorFlo® Unclamp Delay Valve operates as a normally open element in an hydraulic clamping system. Low pressure fluid flows freely through the valve to downstream devices. As pressure in the system builds, the mechanical pilot piston moves away from the check valve allowing it to close. Full system pressure is reached and flow in the system stops. If pressure leaks off in downstream devices, the check valve will re-open and replenish pressure. During unclamping, inlet pressures falls with main system pressure but downstream pressure is held constant by the check valve. At the low inlet pressure, spring force starts to move the mechanical pilot towards the check valve at a rate set by the flow control and oil viscosity. The mechanical pilot piston moves through its stroke and encounters the check valve. Spring force opens the check to release all downstream pressure to the power unit reservoir.

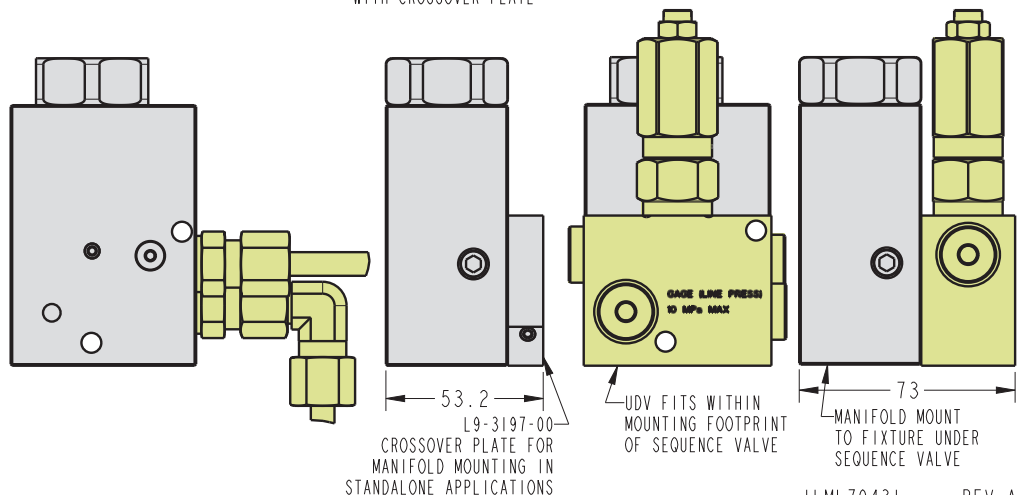


USE AS STANDALONE VALVE EXTERNALLY PLUMBED

USE AS STANDALONE VALVE MANIFOLD MOUNTED TO FIXTURE WITH CROSSOVER PLATE

USE IN NEW OR EXISTING APPLICATIONS UNDER SEQUENCE VALVE MANIFOLD MOUNTED TO FIXTURE

### Mounting Options



H-1

\* Manifold mount o-rings included. Ships with all ports plugged.  
 \*\* Maximum inlet pressure 10 MPa. Excess pressure voids warranty  
 \*\*\* Duration of time delay may vary depending on the viscosity of oil in the application. If longer delays are required (up to 20 sec), contact Vektetek Customer Support for assistance.