

Shutoff and Check Valves

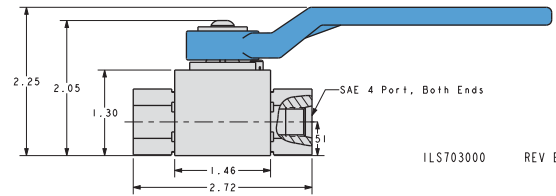
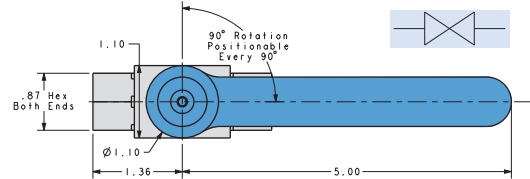
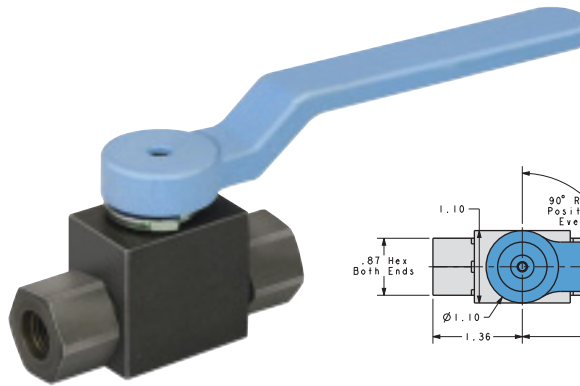
Shutoff Valve

- Ball valve designed for positive shutoff operation.
- Handle is easily moved, even under maximum pressure.
- Straight handle available order Part No. 00-1070-00.

Precision, steel components and molded spherical seats provide a positive seal to isolate your fixture. Use with hydraulic junction manifolds on page I-1 and I-2 for secure fixture mounting.

NOTE: Maximum system flow rate is 1.5 gpm (346.5 cu. in./ minute) for all VektorFlo® special function valves unless otherwise noted.

Excess flow voids warranty.



Shutoff Valve

Model No.
70-3000-00

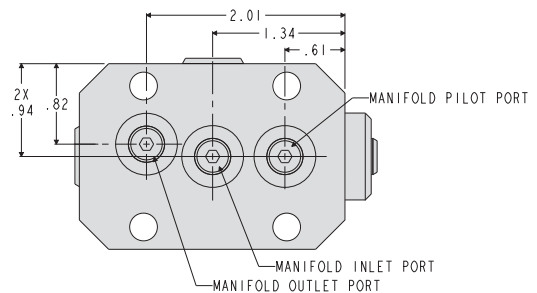
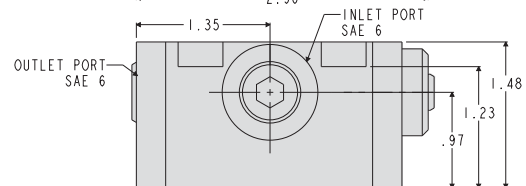
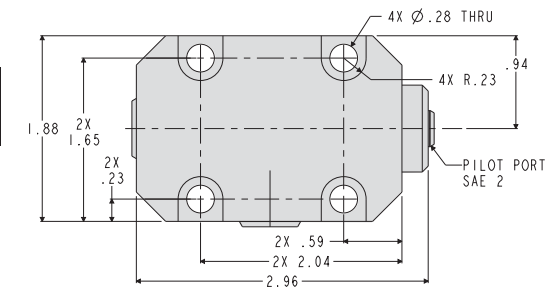


"A" Pilot Operated Check

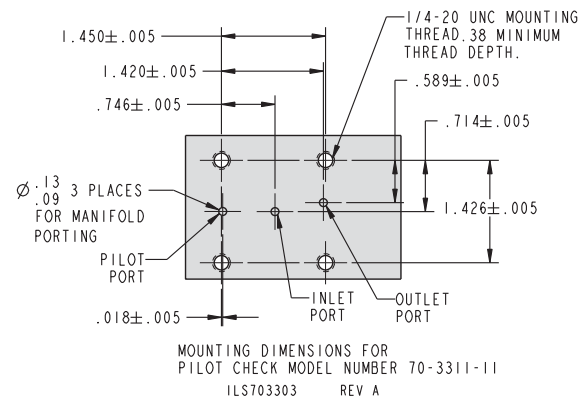
Model No.
70-3311-11

"A" Pilot Operated Check Valve

- Sealed pilot piston eliminates cross circuit leakage.
- 5:1 Ratio of Pilot to Check pressure for release.
- Filters on each port location.
- Unclamp device sequencer, provides a way to sequence single circuit unclamp timing.
- Requires a "B" pilot to open "A" line check valve (requires a double acting control valve to operate single acting systems)
- Stainless steel inner valve construction.
- Maximum operating pressure 5,000 psi



PILOT OPERATED CHECK VALVE MODEL NO. 70-3311-11
ILS703300 REV C



NOTE: Field repair requires a special Check Valve Installation Tool. Please order Model No. 65-6000-00.

For proper sealing, mating surface must be flat to 0.003 in. with a maximum 63 μ in. R_a surface finish.