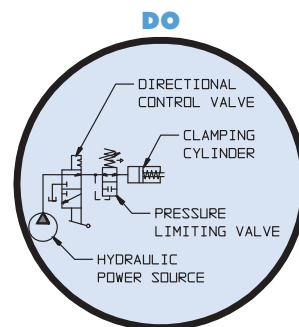
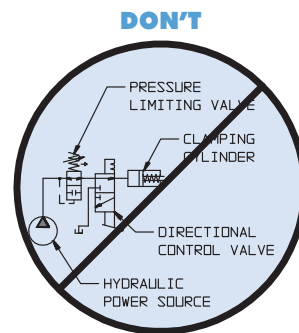


# Accessory Valves

## Pressure Limiting Valve

### Pressure Limiting Valve

- Recommended for use in single acting systems only.
- Direct acting, poppet style, adjustable, cartridge type construction.
- Cartridge may be installed directly into your manifold.
- All pressure limiting valve configurations are designed to operate with up to 5,000 psi on the inlet (P) port.
- Seal Material: Internal seals are nylon.
- Internal adjustment discourages tampering with pressure adjustment setting.
- Two-port design eliminates need for third fluid line to drain bypass flow (internal leakage) back to system reservoir.
- Recommended Filtration: 25 Micron (NOM) / 40 Micron (ABS) (minimum).



ILSSCHAB REV B

**Operation:** The Pressure Limiting Valve (PLV) is a Normally Open (N/O) pressure control device. The valve remains open and fluid flows freely to downstream devices (from the valve to devices) until the pressure in the valve reaches the pressure (adjustable) set-point. At set-point pressure the valve closes, blocking further flow and pressure rise to the downstream devices. The internal valve seal prevents fluid flow through the valve in either direction until the inlet pressure (power source to the valve) is reduced to near zero.

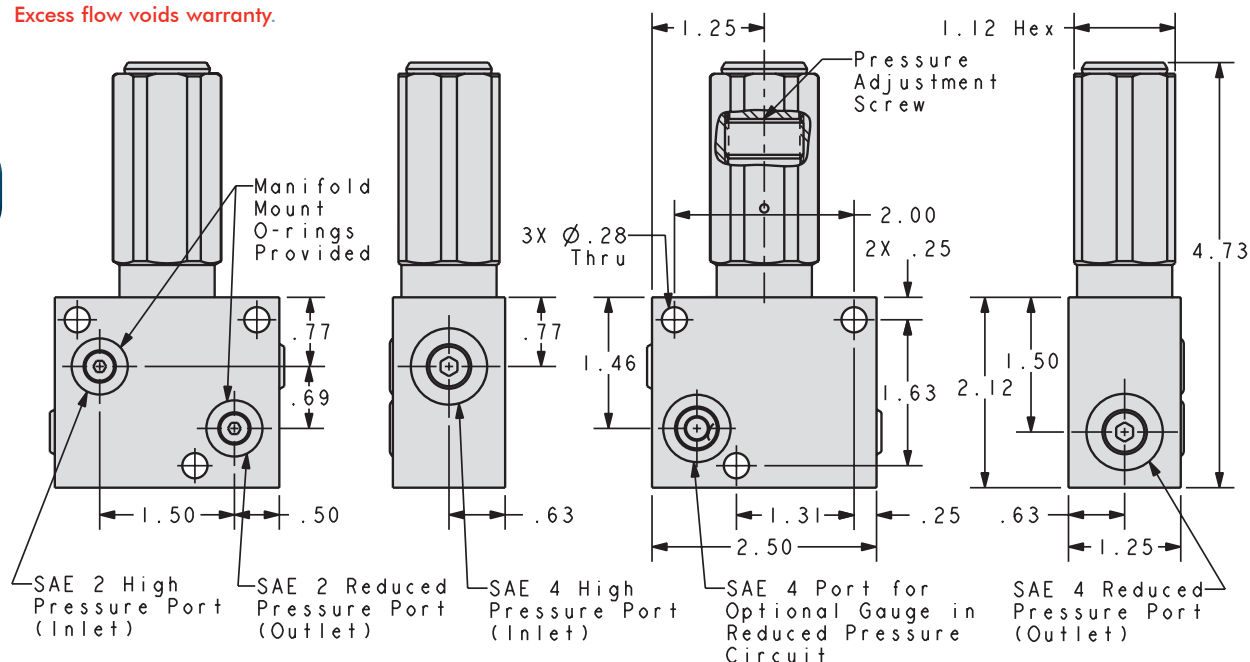
**NOTE:** Maximum system flow rate is 1.5 gpm (346.5 cu. in. per minute) for all VektorFlo® special function valves unless otherwise noted.

For proper sealing, mating surface must be flat within 0.003 in. with a maximum 63  $\mu$  in.  $R_a$  surface finish.

## Pressure Adjustment Ranges

Pressure Limiting Models			
Model No.	Range	Factory Preset	Cartridge Model
70-5400-08	750 psi to 2,500 psi	1,000 psi	70-5430-08
70-5400-07	1,000 psi to 3,500 psi	1,500 psi	70-5430-07
70-5400-06	1,500 psi to 5,000 psi	2,000 psi	70-5430-06

Excess flow voids warranty.

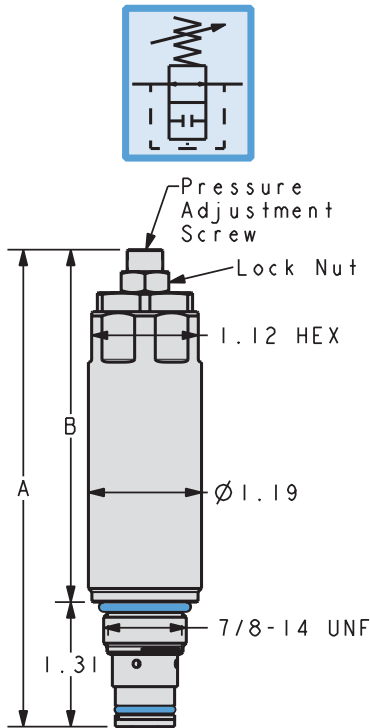


ILS705400 REV E



# Accessory Valves

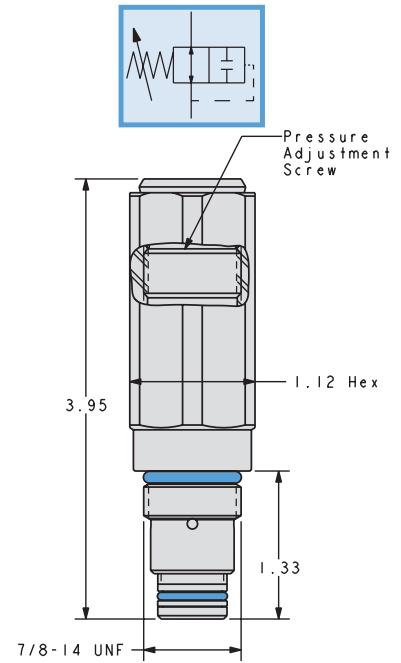
## Pressure Limiting Cartridge and Pressure Reducing Cartridge Cavity



ILS705408 REV A



See product Page M-15

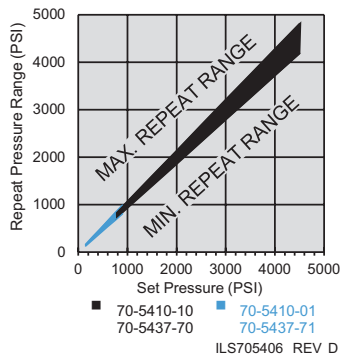


ILS705401 REV C

## Pressure Reducing Cartridge

Model No.	Inlet Pressure*	Set Pressure Range	Repeatability	A	B
70-5437-70	5000 psi	750 - 4500 psi	± 7%	5.0	3.25
70-5437-71	<3000 psi >3000 psi	150 - 900 psi 300 - 900 psi	± 10%	5.7	3.96

\* Maximum Inlet Pressure for PRV is 5,000 psi



ILS705406 REV D

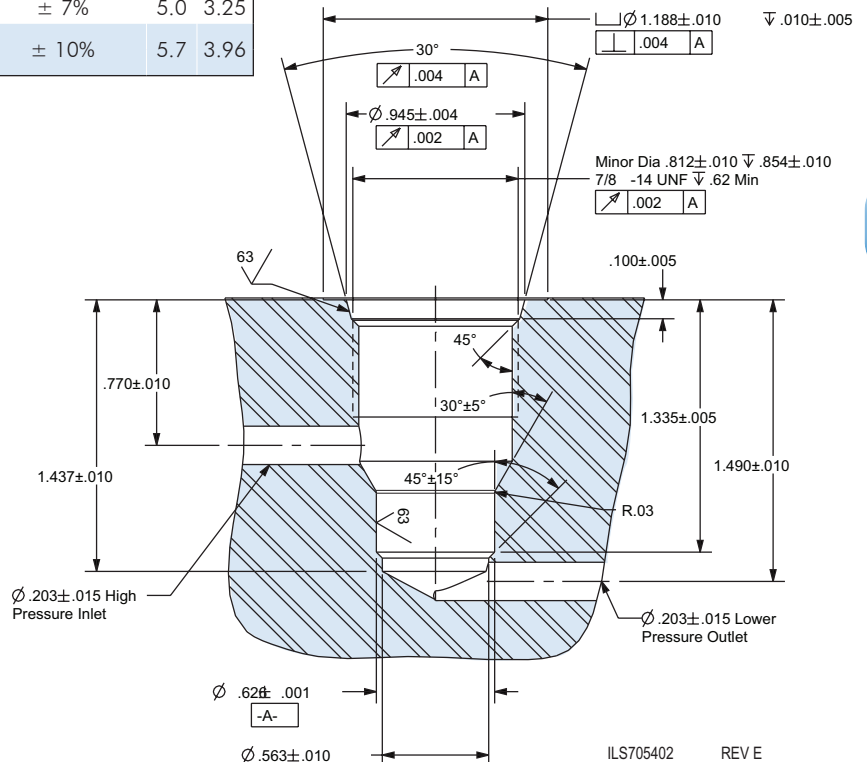
■ Pressure Limiting Cartridge and Pressure Reducing Cartridge use the same mounting cavity.

**NOTE:** For cavity tooling (multistep Reamer), order kit 62-7050-00.

If a PRV/PLV is no longer needed, use standard SAE#10 plug, 30-6011-99, to cap cavity for free fluid pass through.

## Pressure Limiting Cartridges

Model No.	Pressure Limit
70-5430-08	Pressure Limit 750-2500
70-5430-07	Pressure Limit 1000-3500
70-5430-06	Pressure Limit 1500-5000



ILS705402 REV E

M-15