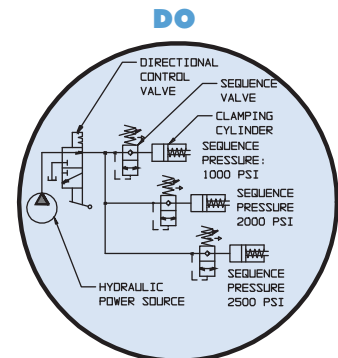
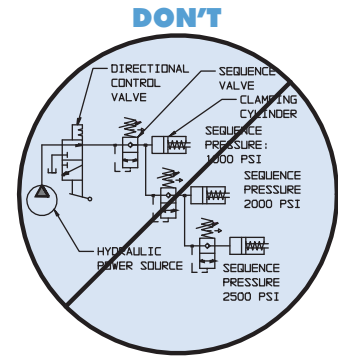


Accessory Valves

Sequence Valve

Sequence Valve

- Control the timing of fixture devices.
- Specialized construction resists corrosion which can cause other styles to "misfire".
- Direct acting poppet style construction.
- Manifold mountable.
- Cartridge may be installed directly into your manifold.
- Two-port design eliminates need for third fluid line to drain bypass flow (internal leakage) back to system reservoir.
- True sequence design allows full system pressure downstream of valve after opening.
- Recommended Filtration: 25 Micron (NOM) / 40 Micron (ABS) (minimum).



ILSSCHAA REV B

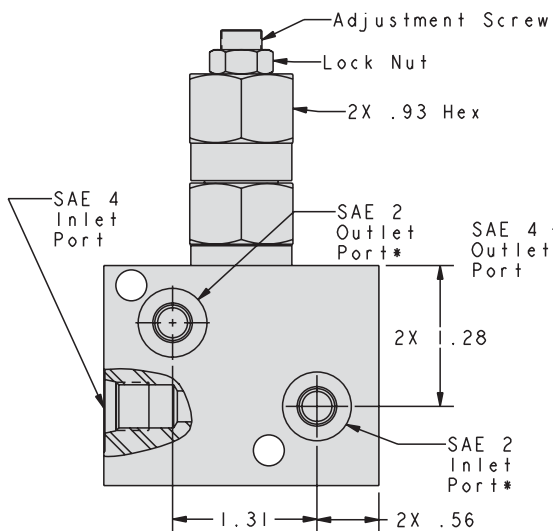
Operation: The VektorFlo® sequence valve operates as a pressure sensitive, normally closed element in a clamping system. When fluid first enters the system at low pressure, the valve is closed, blocking the flow of fluid to devices downstream. After devices in the other branches of the system have moved into position, the pressure begins to increase. The increasing pressure overcomes the spring force holding the valve closed, forcing the poppet off its seat, and allowing fluid flow through the valve. After all devices have positioned and clamped, the downstream pressure increases to equal upstream pressure. Pressure throughout the system will increase to the maximum setting on the hydraulic power supply. When unclamping, as pressure falls, force from the adjustment spring pushes the poppet back onto its seat. Fluid trapped in the downstream circuit flows back through the check seat to return to the power unit reservoir.

Sequence Valve

Model No.	Set Pressure Range	A	B	Max Flow
70-4400-01	300 to 900 psi	4.7	2.37	3.0 gpm
70-4400-02	750 to 5000 psi	4.1	1.75	1.5 gpm

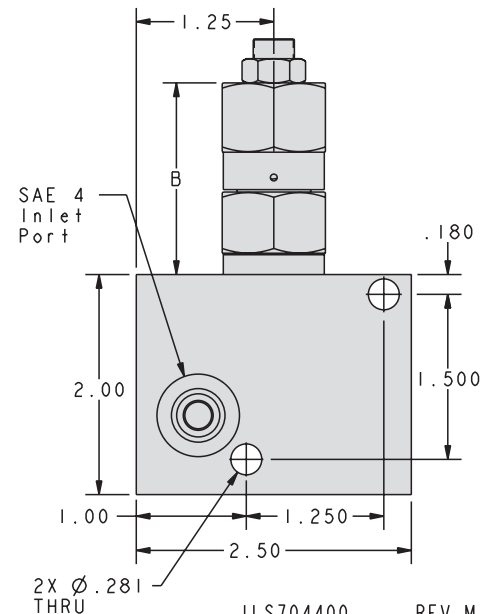
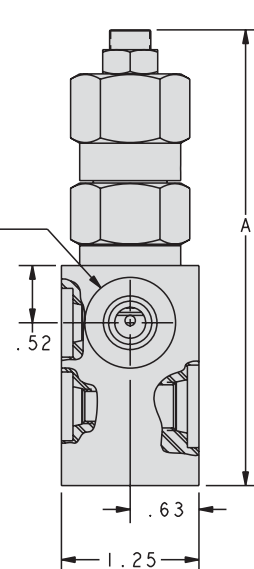
*Maximum Inlet Pressure for sequence valve is 5,000 psi, excess voids warranty.

M-10



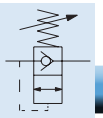
*SAE 2 Ports are counterbored for o-rings that are used in manifold mounting applications.

∅.09 / .15 FEED HOLES



For proper sealing, mating surface must be flat to 0.003 in. with a maximum 63 μ in. R_a surface finish.





Sequence Cartridge

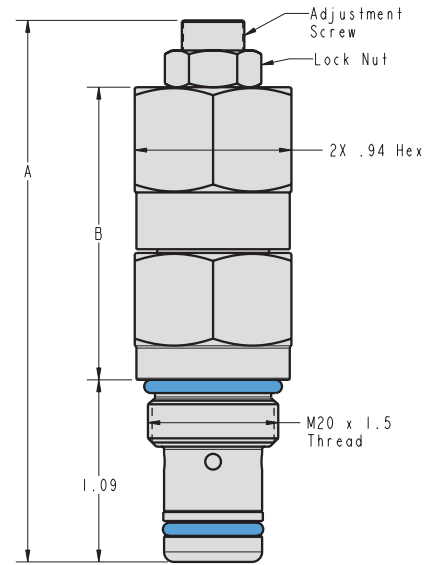
NEW

SET RANGE
More flexibility

Sequence Valve Cartridge

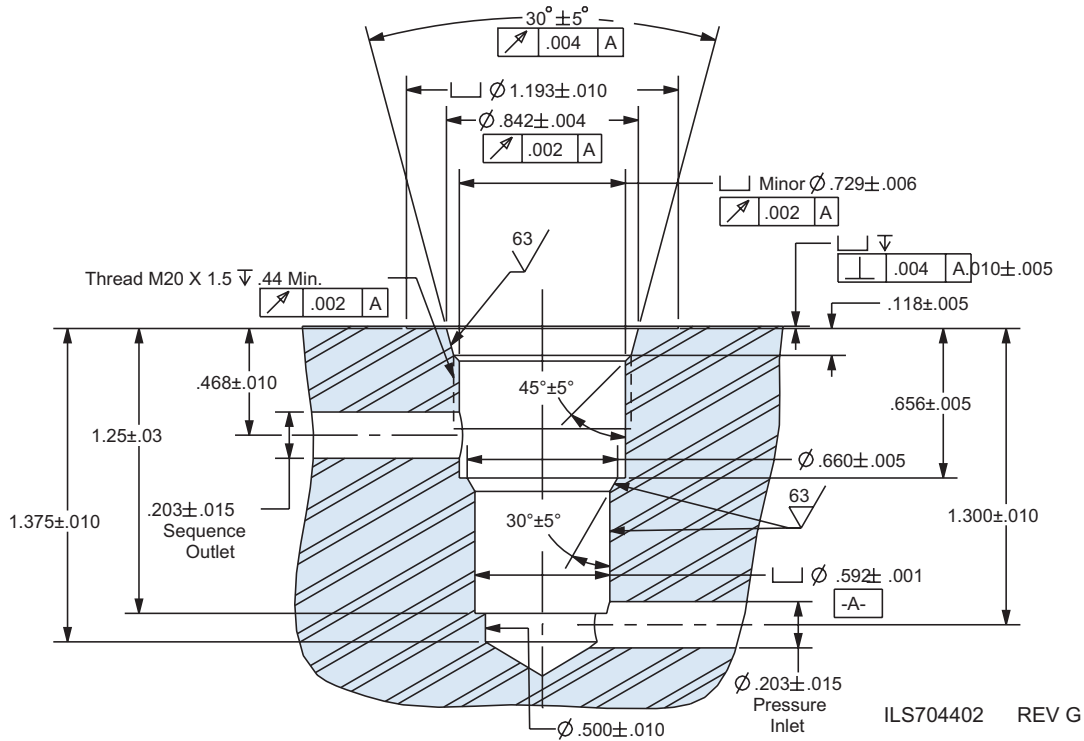
Model No.	Set Pressure Range	A	B	Max Flow
70-4430-01	300 to 900 psi	3.8	2.37	3.0 gpm
70-4430-02	750 to 5000 psi	3.2	1.75	1.5 gpm

* Maximum Inlet Pressure for sequence valve is 5,000 psi, excess voids warranty.



ILS704401 REV E

Sequence Valve Cartridge Cavity



ILS704402 REV G

Multi-Step Carbide Cavity Contour Tool with Tap Kit

Model No.
62-7040-00
Reamer and M20 x 1.5 tap

NOTE: If a sequence valve is no longer needed, use 30-6011-20 plug, to cap cavity for free fluid pass through.

M-11