

Cylinders

Block, Manifold Mount

Single and Double Acting

- No external ports or external plumbing to collect chips.
- Reduced installation labor.
- Available in the same popular sizes as our other block cylinders.



F-8

Model No.	Cylinder Capacity (lb.)**		Stroke (in.)	Body Size	Min. Length (in.)	Effective Piston Area (sq. in.)		Oil Capacity (cu. in.)	
	Extend	Retract				Extend	Retract	Extend	Retract
Single Acting (S/A)***									
Cylinders, actuated hydraulically 1 direction, spring returned.. ***									
21-1108-00	2200	N/A	0.25	1.13 x 2.00	2.40	0.442	N/A	0.110	N/A
21-1108-01			0.75		3.15			0.330	N/A
21-1110-05	3900	N/A	0.50	2.00 x 2.00	2.69	0.785	N/A	0.393	N/A
21-1110-01			1.00		3.19			0.785	N/A
21-1110-04			1.50		3.81			1.177	N/A
21-1110-02			2.00		4.31			1.570	N/A
21-1115-00	8800	N/A	0.50	2.00 x 2.50	2.77	1.767	N/A	0.884	N/A
21-1115-01			1.00		3.27			1.767	N/A
21-1115-04			1.50		3.77			2.650	N/A
21-1115-02			2.00		4.27			3.534	N/A
Double Acting (D/A)									
Cylinders, actuated hydraulically both directions.									
21-1208-00	2200	1200	0.25	1.13 x 2.00	2.40	0.442	0.246	0.110	0.061
21-1208-01			0.75		3.15			0.330	0.183
21-1210-00	3900	1300	0.50	2.00 x 2.00	2.69	0.785	0.267	0.393	0.134
21-1210-01			1.00		3.19			0.785	0.268
21-1210-04			1.50		3.81			1.177	0.400
21-1210-02			2.00		4.31			1.570	0.536
21-1215-05	8800	3800	0.50	2.00 x 2.50	2.77	1.767	0.773	0.884	0.387
21-1215-01			1.00		3.27			1.767	0.774
21-1215-04			1.50		3.77			2.650	1.160
21-1215-02			2.00		4.27			3.534	1.548

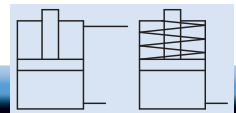
** Cylinder capacities are listed at 5,000 psi maximum operating pressure. Cylinder force can be adjusted by varying the hydraulic system pressure. To calculate the approximate output force for an application, multiply the predetermined operating pressure by the effective piston area. The actual output force will vary slightly due to frictional losses within the assembly and/or return spring forces.

*** Breather or vent must be provided for S/A Models.

Dimensions

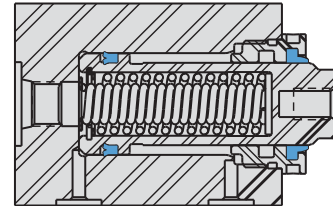
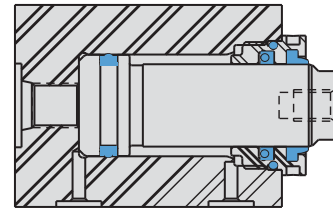
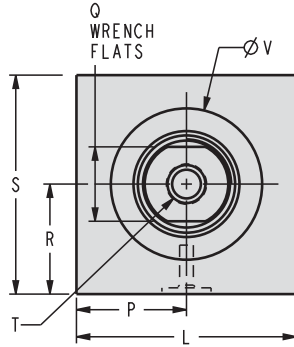
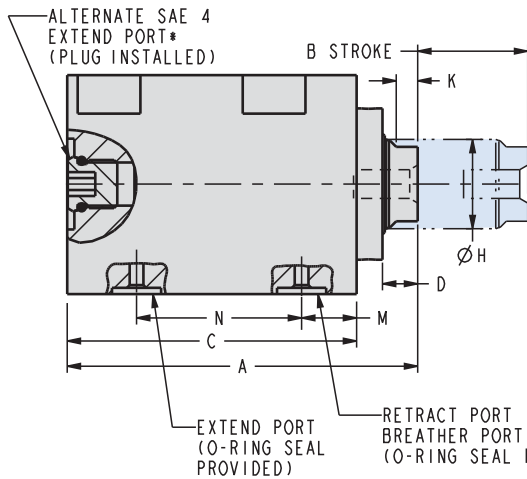
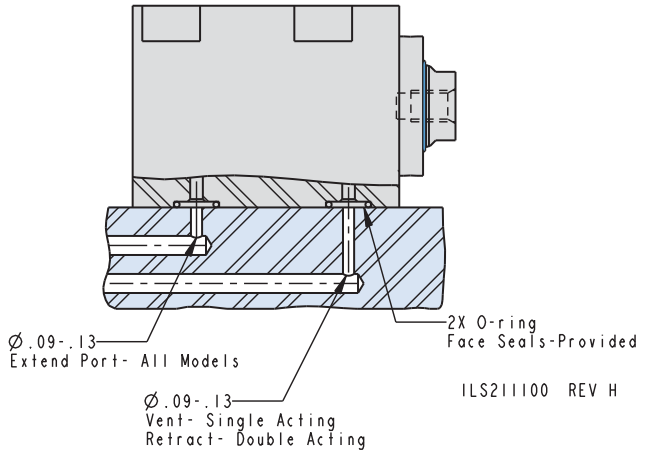
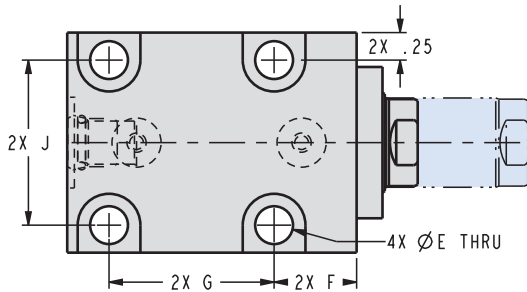
Model No.	Capacity	A	B	C	D	E	F	G	H	
Single Acting (S/A)										
21-1108-00	2200	2.40	0.25	1.88	0.29	0.28	0.75	0.88	0.50	
21-1108-01		3.15	0.75	2.63						1.63
21-1110-05	3900	2.69	0.50	2.13	0.32	0.34	0.75	1.00	0.81	
21-1110-01		3.19	1.00	2.63						1.50
21-1110-04		3.81	1.50	3.13						2.00
21-1110-02		4.31	2.00	3.63						2.50
21-1115-00	8800	2.77	0.50	2.14	0.40	0.34	0.75	1.00	1.13	
21-1115-01		3.27	1.00	2.64						1.50
21-1115-04		3.77	1.50	3.14						2.00
21-1115-02		4.27	2.00	3.64						2.50
Double Acting (D/A)										
21-1208-00	2200	2.40	0.25	1.88	0.29	0.28	0.75	0.88	0.50	
21-1208-01		3.15	0.75	2.63			1.63			
21-1210-00	3900	2.69	0.50	2.13	0.32	0.34	0.75	1.00	0.81	
21-1210-01		3.19	1.00	2.63						1.50
21-1210-04		3.81	1.50	3.13						2.00
21-1210-02		4.31	2.00	3.63						2.50
21-1215-05	8800	2.77	0.50	2.14	0.40	0.34	0.75	1.00	1.13	
21-1215-01		3.27	1.00	2.64						1.50
21-1215-04		3.77	1.50	3.14						2.00
21-1215-02		4.27	2.00	3.64						2.50

Cylinders



Block, Manifold Mount

For proper sealing, mating surface must be flat within 0.003 in. with a maximum 63 μ in. R_a surface finish.



ILS211102 REV F

*Not available on models 21-1108-XX and 21-1208-XX.

ILS211101 REV N

F-9

J	K	L	M	N	P	Q	R	S	T	V
Cylinders, actuated hydraulically 1 direction, spring returned.										
1.50	0.22	2.00	0.50	0.88 1.63 1.00	1.00	0.43	0.55	1.12	1/4-20 x 0.44	1.06
1.50	0.26	2.00	0.50	1.50 2.00 2.50	1.00	0.68	1.000	1.99	5/16-18 x 0.44	1.38
2.00	0.36	2.50	0.50	1.00 1.50 2.00 2.50	1.25	1.00	1.000	1.99	1/2-13 x 0.51	1.75
Cylinders, actuated hydraulically both directions.										
1.50	0.22	2.00	0.50	0.88 1.63 1.00	1.00	0.43	0.55	1.12	1/4-20 x 0.44	1.06
1.50	0.26	2.00	0.50	1.50 2.00 2.50	1.00	0.68	1.000	1.99	5/16-18 x 0.44	1.38
2.00	0.36	2.50	0.50	1.00 1.50 2.00 2.50	1.25	1.00	1.000	1.99	1/2-13 x 0.51	1.75