

Directional Control Valves

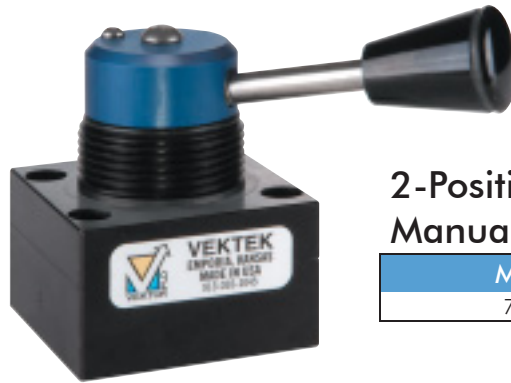
2-Position, 3-Port

Control Valves: 2-Position, 3-Port, D03 Mount

- Available as either manual or solenoid operator.
- Efficient control solutions for single-acting systems.
- 2-Position, 3-Port manual valve is equipped with colored bonnet to differentiate it from the 3-Position, 4-Port.
- Shear style valve design features hardened steel poppets in an aluminum body.
- Low restriction design generates a pressure drop of less than 2 psi with a 2 gpm flow.

NOTE: Maximum system flow rate is 1.5 gpm (346.5 cu. in. per minute) for all VektorFlo® special function valves.

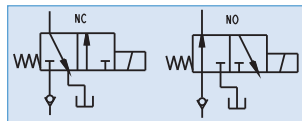
Excess flow voids warranty.



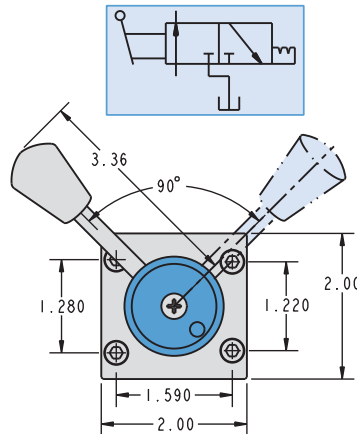
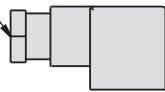
2-Position, 3-Port Manual Valve

Model No.

71-1422-02

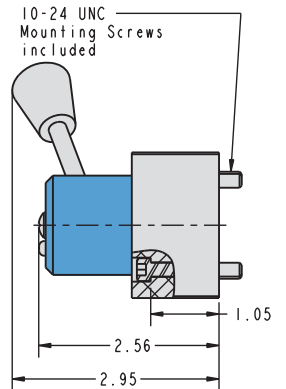


DIN 43650
Solenoid Valve
Connector Included

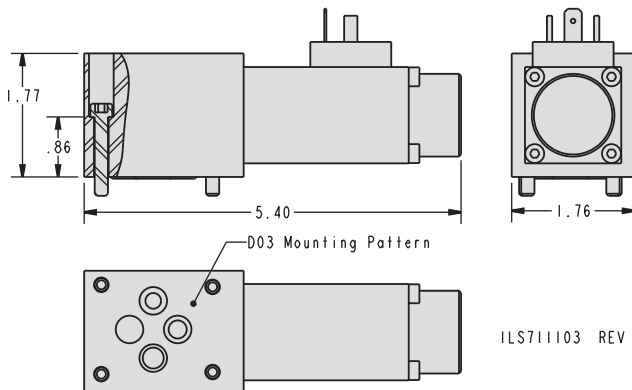


Handle/Bonnet may be repositioned every 90° from position shown.

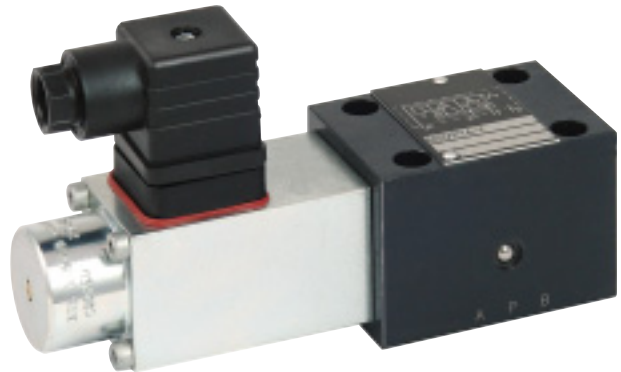
71-1422-02 D03 Mounting



ILS711402 REV D



ILS711103 REV G



2-Position, 3-Port Solenoid

Model No.	Function	Valve Connector Part No.	Solenoid Voltage*	Power Consumption (Watts)	Duty Rating
71-1122-54	Normally Open	85-5342-91	24 VDC	27.6	100%
71-1122-13	Normally Open	87-1123-00	115 VAC*	28.6	
71-1150-03	Normally Closed	85-5342-91	24 VDC	27.6	
71-1150-05	Normally Closed	87-1123-00	115 VAC*	28.6	

* Supplied with rectified connectors that must be used to insure proper valve function and warranty. Use of any other connector will void the valve warranty.

