

# Directional Control Valves

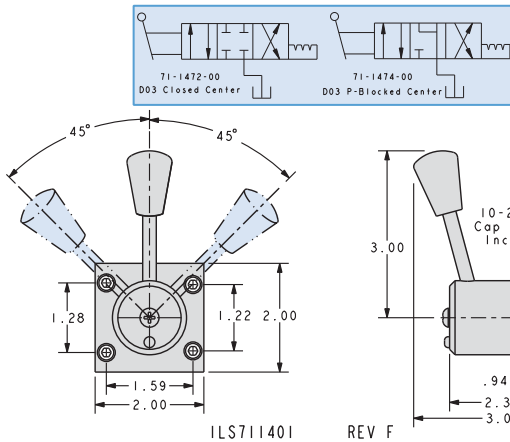
## 3-Position, 4-Port Manually Operated

### Control Valves: 3-Position, 4-Port

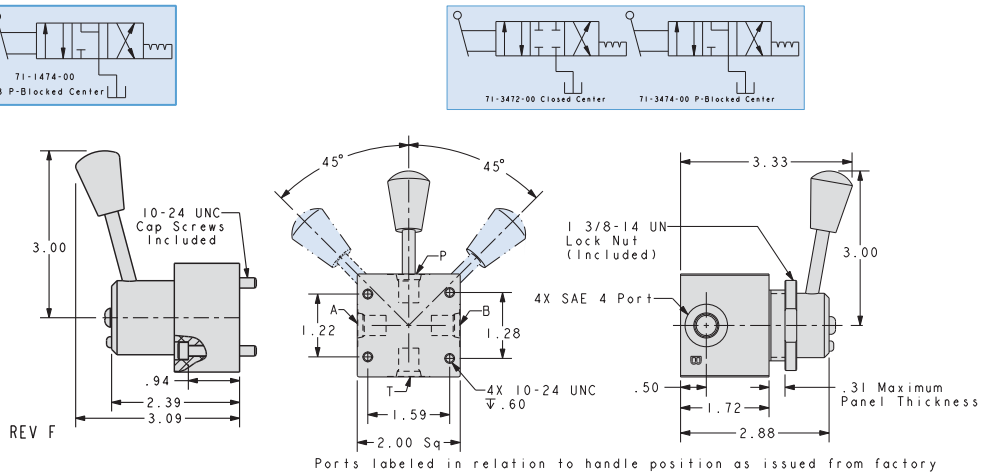
- These valves offer the features required to efficiently control a double acting workholding system. (They may also be used to control single acting systems working in opposition.)
- Valves incorporate extremely low leakage (4 drops per minute per seal) pressure balanced shear type seals and poppet designs.
- Heat treated rotor and poppets are spring and pressure loaded against each other to provide positive fluid control for hundreds of thousands of cycles
- Operates with rotary handle motion using an anti-friction rotary bearing. Detented internal rotor snaps into position ensuring accurate alignment of internal flow passages.
- All valves incorporate lightweight aluminum alloy bodies and are furnished with required standard length mounting bolts.



### DO3 Mount

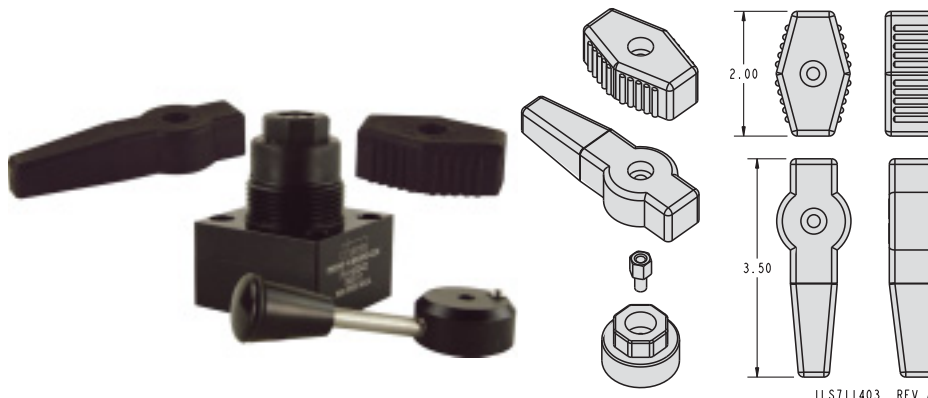


### Panel Mount



### Control Valves: 3-Position, 4-Port Manual

Model No.	Valve Configuration	Seals	Fluid Temp. Maximum	Fluid Flow Maximum	Tank Port Pressure
<b>DO3 Mount</b>					
71-1472-00	Closed Center	Buna	158° F	3 gpm	250 psi max
71-1474-00	P-Blocked Center	N Teflon*			
<b>Panel Mount</b>					
71-3472-00	Closed Center	Buna	158° F	3 gpm	250 psi max
71-3474-00	P-Blocked Center	N Teflon*			



### Manual Valve Handle

Model No.*	Valve Type
62-7004-08	Kit contains: long and short handles, adapter mounting screw and adapter
ILS711403	

\* Use with manual Valves: 71-1422-02, 71-1472-00, 71-1474-00, 71-3472-00, and 71-3474-00

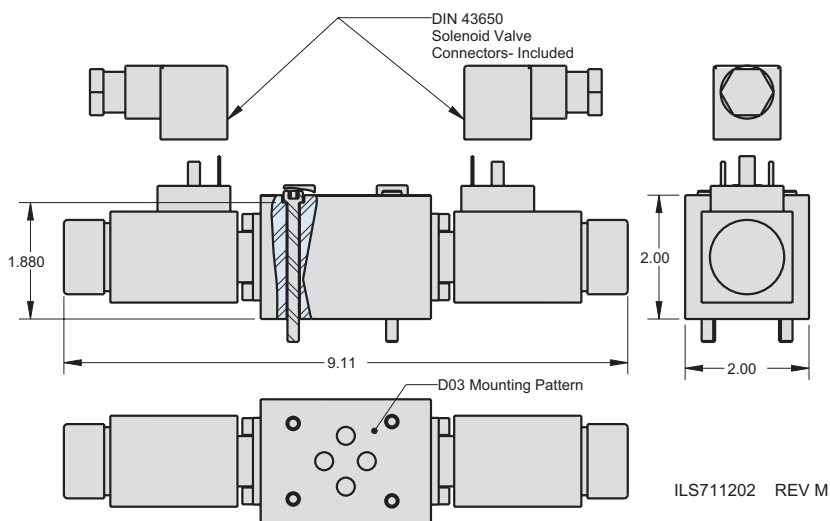
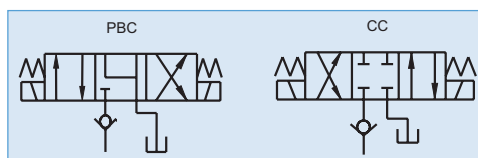


# Directional Control Valves

## 3-Position, 4-Port Solenoid Operated

### Control Valves 3-Position, 4-Port

- Provide improved control of clamping circuits with true poppet design.
- Multiple coil voltages available.
- Internal design promotes improved service life.
- Narrow width allows mounting of multiple valves on standard DO3 manifolds.
- All valves have built-in P-Block check for fail safe multi-valve operation.
- Coils can be easily replaced.



### Control Valves: 3-Position, 4-Port Solenoid

Model No.	Function	Valve Connector Part No.	Solenoid Voltage*	Power Usage (watts)	Duty Rating
71-1235-21	Closed Center	85- 5342-91	24 VDC	27.6	100%
71-1235-22	Closed Center	87-1123-00	115 VAC*	28.6	
71-1235-40	P-Blocked Center	85-5342-91	24 VDC	27.6	
71-1235-41	P-Blocked Center	87-1123-00	115 VAC*	28.6	

\* Supplied with rectified connectors that must be used to insure proper valve function and warranty. Use of any other connector will void the valve warranty.

