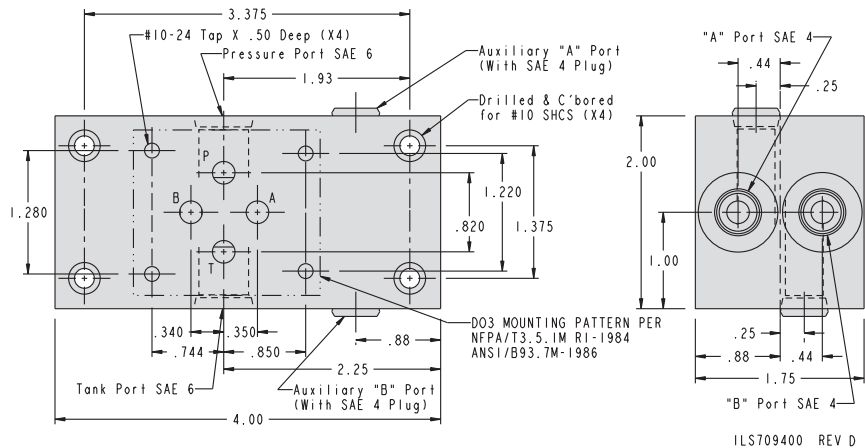
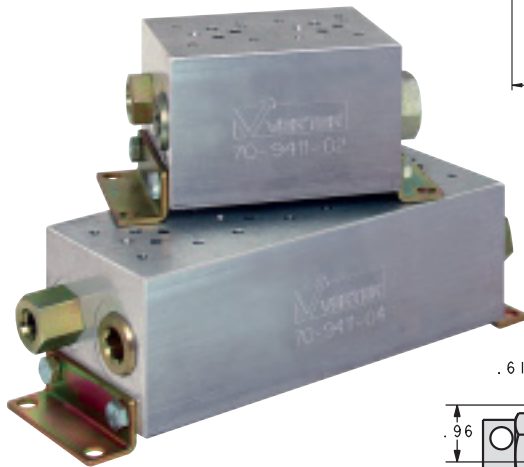


Directional Control Valves

Valve Subplates

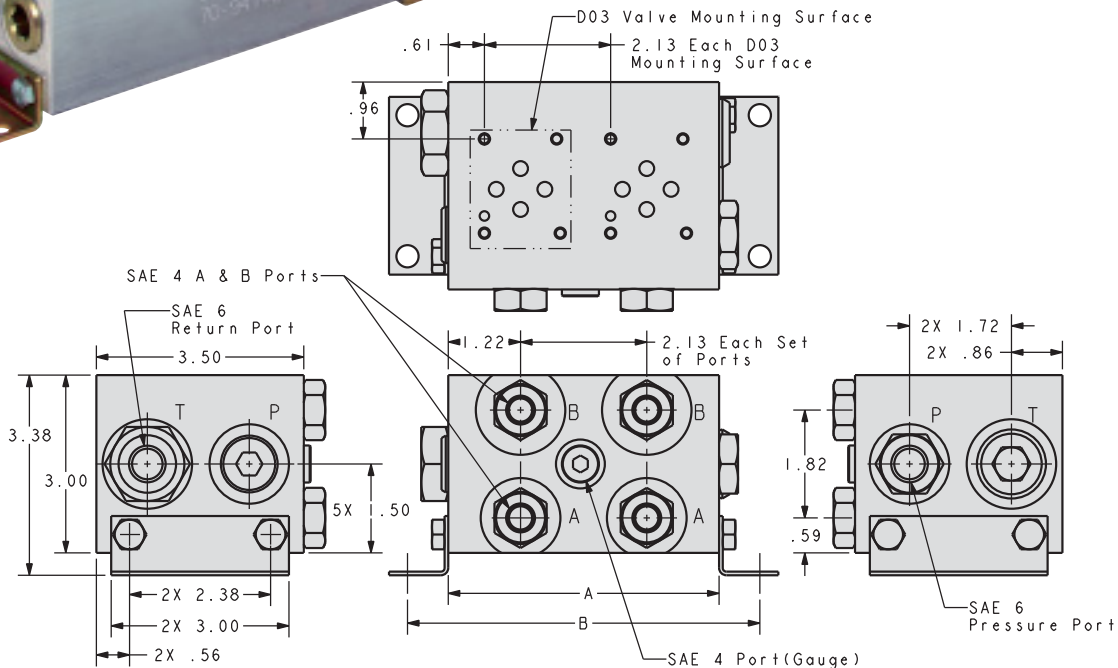
NFPA D03 Standard

- Contains all plumbing connections for "P", "T", "A", and "B" connections.
- Simplifies "at the fixture" valve mounting for 1, 2 or 4 valve plumbing.
- Makes valve changes simple, just remove four cap screws to change valves.
- All VektorFlo® valves fit the D03 pattern except panel mount model.



Subplate Model No.

70-9411-00



Model No.	Description	A	B
70-9411-02	Two Valve Manifold	4.57	5.95
70-9411-04	Four Valve Manifold	8.83	10.21

When using multiple manual valves, that will actuate simultaneously, use a check valve stack block (70-3425-00) under each valve.

These subplates for use with the following valves:

2-Position 3-Port Manual Valve	Model No.	71-1422-02
2-Position 3-Port Solenoid Valves	Model Nos.	71-1122-54 71-1122-13
		71-1150-03 71-1150-05
3-Position 4-Port Manual Valves	Model Nos.	71-1472-00 71-1474-00
3-Position 4-Port Solenoid Valves	Model Nos.	71-1235-21 71-1235-22
		71-1235-40 71-1235-41

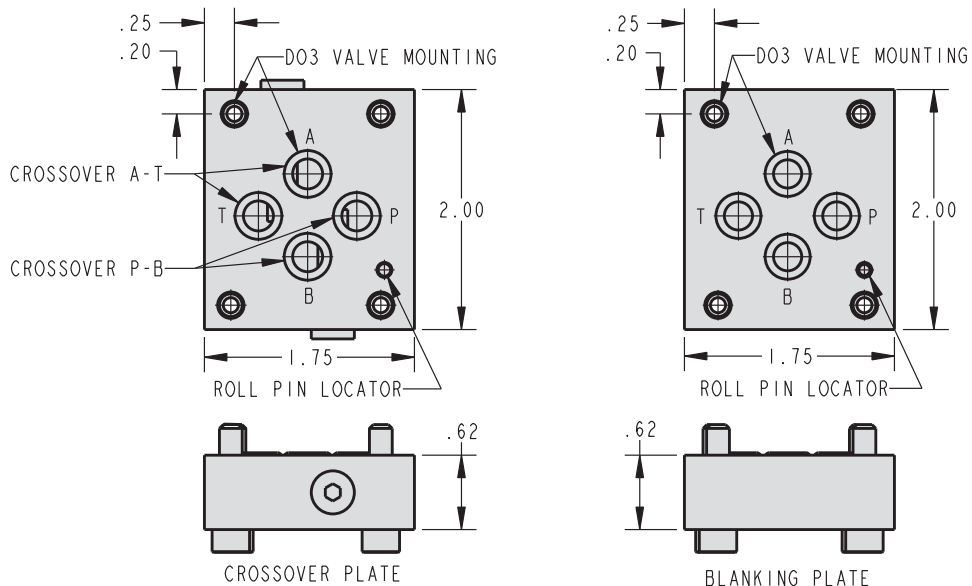
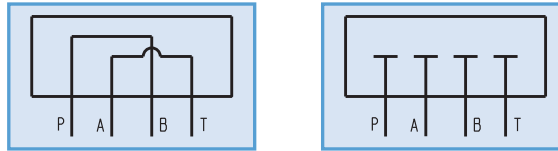


Directional Control Valves

Valve Subplates

Crossover and Blanking Plates

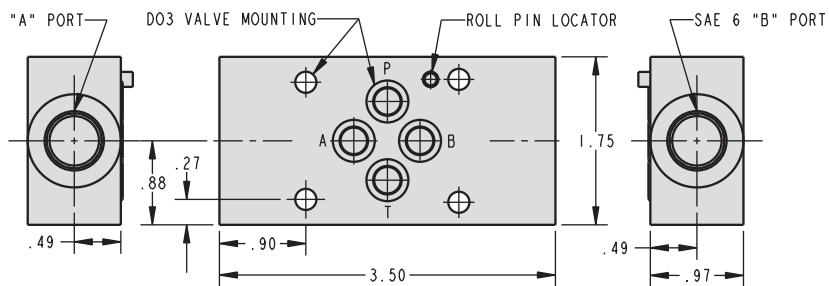
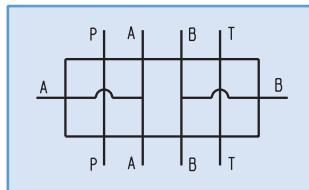
Plates
93-1989-00 Crossover Plate
93-1989-01 Blanking Plate



ILS709402 REV A

A-B Tapping Plates

Tapping Plate
70-9425-11 A-B Tapping Plate



ILS709403 REV B

N-3

