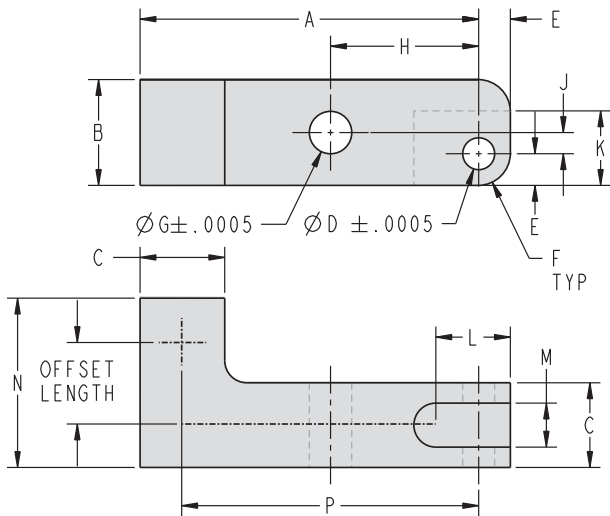
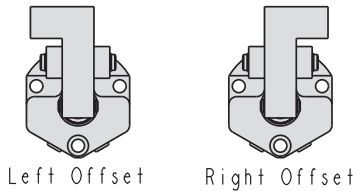


# Link Clamp Levers

High Pressure Offset



(Left Offset Shown)



Left Offset

Right Offset

ILS916005 REV A



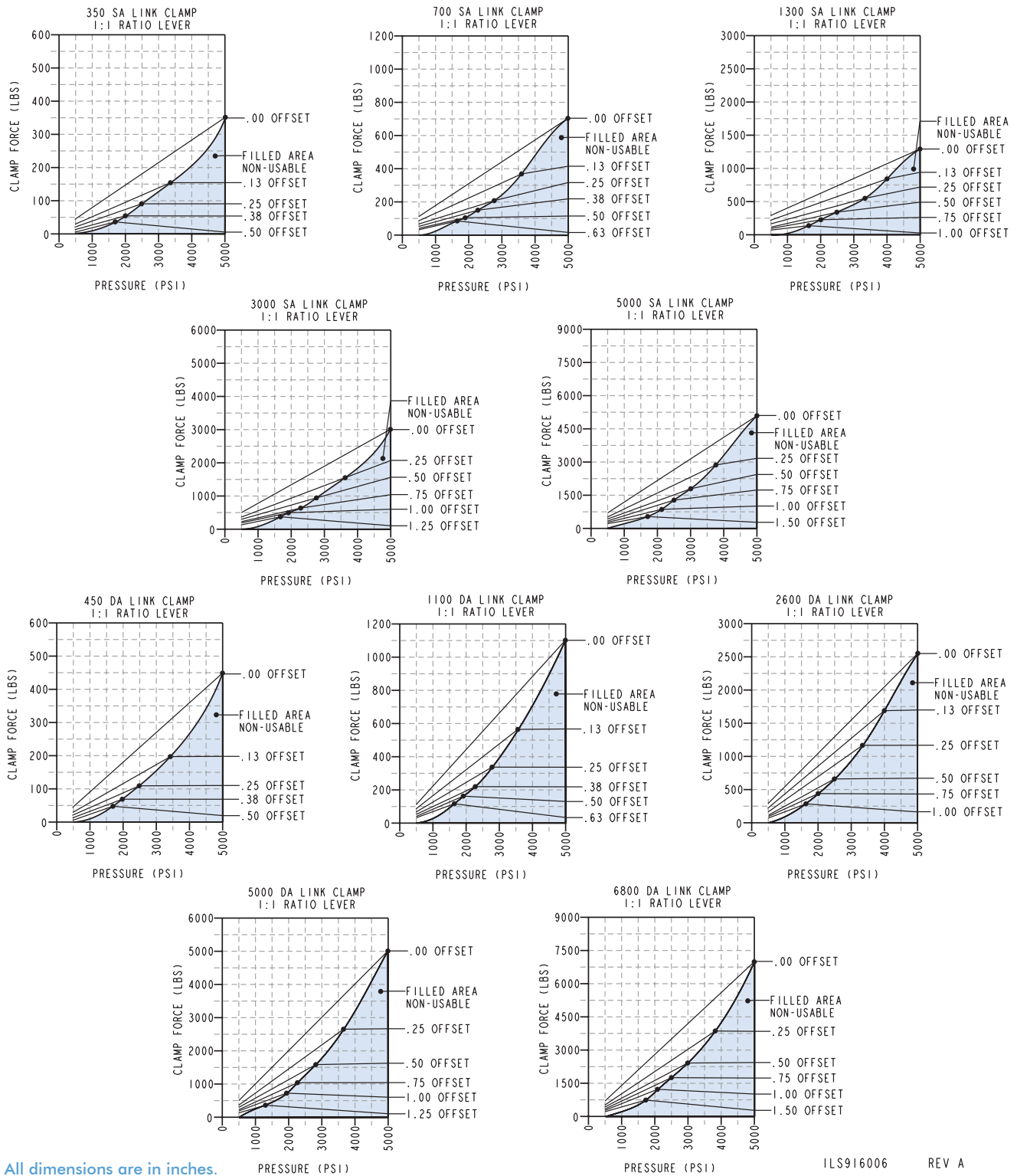
## Dimensions

Model No.	Cylinder Capacity (lbs) S/A	Cylinder Capacity (lbs) D/A	A	B	C	D	E	F	G	H	J	K	L	M	N	P
<b>Left Offset Lever, 1:1 Ratio</b>																
91-6004-04	350	450	2.00	0.63	0.50	0.1885	0.187	0.19	0.2505	0.88	0.13	0.44	0.44	0.26	1.00	1.75
91-6006-04	700	1100	2.50	0.88	0.63	0.2515	0.250	0.25	0.3755	1.13	0.13	0.56	0.56	0.32	1.25	2.25
91-6009-04	1300	2600	3.13	1.25	1.00	0.3765	0.375	0.38	0.5005	1.38	0.19	0.81	0.81	0.51	2.00	2.75
91-6014-04	3000	5000	4.00	1.75	1.25	0.5015	0.500	0.50	0.6255	1.75	0.25	1.19	1.19	0.63	2.50	3.50
91-6016-04	5000	6800	4.88	2.00	1.50	0.6265	0.625	0.63	0.7505	2.13	0.25	1.50	1.50	0.76	3.00	4.25
<b>Right Offset Lever, 1:1 Ratio</b>																
91-6004-05	350	450	2.00	0.63	0.50	0.1885	0.187	0.19	0.2505	0.88	0.13	0.44	0.44	0.26	1.00	1.75
91-6006-05	700	1100	2.50	0.88	0.63	0.2515	0.250	0.25	0.3755	1.13	0.13	0.56	0.56	0.32	1.25	2.25
91-6009-05	1300	2600	3.13	1.25	1.00	0.3765	0.375	0.38	0.5005	1.38	0.19	0.81	0.81	0.51	2.00	2.75
91-6014-05	3000	5000	4.00	1.75	1.25	0.5015	0.500	0.50	0.6255	1.75	0.25	1.19	1.19	0.63	2.50	3.50
91-6016-05	5000	6800	4.88	2.00	1.50	0.6265	0.625	0.63	0.7505	2.13	0.25	1.50	1.50	0.76	3.00	4.25

# Link Clamp Levers

## High Pressure Offset Output Curves

### Single and Double Acting Link Clamp Lever Output Curves

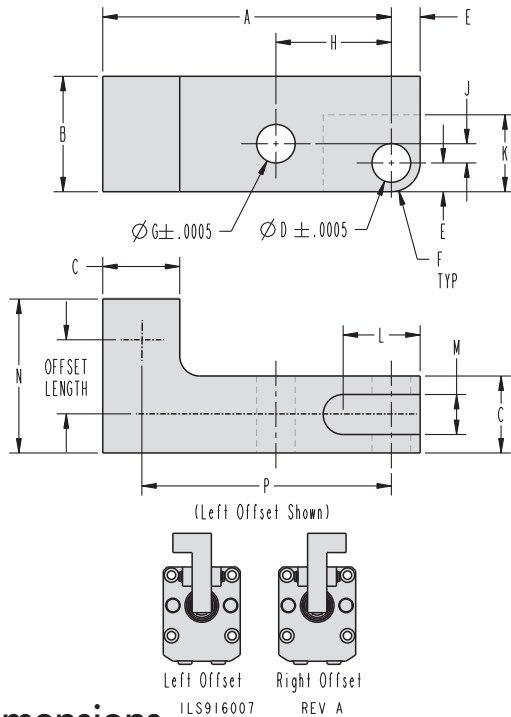


**NOTE:** Modifications to levers that result in clamp ratios below a 1:1 ratio are not in the safe operating zone for the corresponding link clamp and could result in premature failure.



# Link Clamp Levers

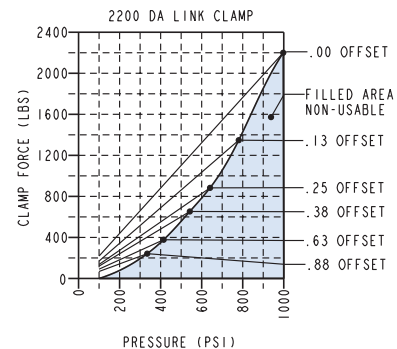
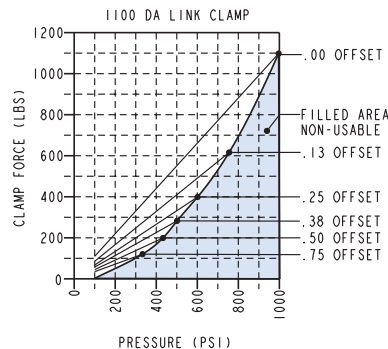
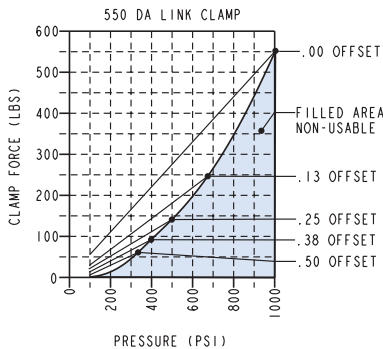
## Low Pressure Offset Output Curves



### Dimensions

Model No.	Cylinder Capacity (lbs)	A	B	C	D	E	F	G	H	J	K	L	M	N	P
<b>D/A Left Offset Lever, 1:1 Ratio</b>															
91-6011-04	550	1.88	0.75	0.50	0.2515	0.19	0.19	0.2505	0.75	0.13	0.50	0.50	0.26	1.00	1.69
91-6015-04	1100	2.63	1.00	0.75	0.3765	0.31	0.31	0.3755	1.00	0.31	0.75	0.69	0.39	1.50	2.25
91-6021-04	2200	3.09	1.25	0.88	0.5015	0.38	0.38	0.5005	1.19	0.38	0.94	0.88	0.45	1.75	2.69
<b>D/A Right Offset Lever, 1:1 Ratio</b>															
91-6011-05	550	1.88	0.75	0.50	0.2515	0.19	0.19	0.2505	0.75	0.13	0.50	0.50	0.26	1.00	1.69
91-6015-05	1100	2.63	1.00	0.75	0.3765	0.31	0.31	0.3755	1.00	0.31	0.75	0.69	0.39	1.50	2.25
91-6021-05	2200	3.09	1.25	0.88	0.5015	0.38	0.38	0.5005	1.19	0.38	0.94	0.88	0.45	1.75	2.69

### Low Pressure Offset Lever Output Curves



ILS916008 REV A

**NOTE:** Modifications to levers that result in clamp ratios below a 1:1 ratio are not in the safe operating zone for the corresponding link clamp and could result in premature failure.

Exceeding the allowable offset values and operating pressures specified in the tables will result in excessive forces on the link clamp pins, links, and rod which could result in premature failure.

