

# Miscellaneous Plumbing

## Manifolds

### Manifolds

- Four different styles to work in your particular system.
- SAE straight thread o-ring ports used exclusively to provide drip free hydraulic connections.
- High strength steel, careful attention to detail in design, and extensive testing ensure reliability at working pressures up to 5,000 psi.

Order plugs separately. Model No. 30-6011-66 for SAE 6 and Model No. 30-6011-44 for SAE 4.

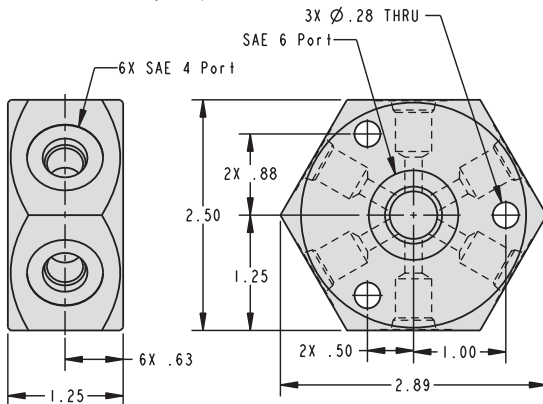


### Hexagonal Manifold

Model No.
31-2266-24

- Centralized connection point for multiple hydraulic lines.
- Widely used on multi-sided fixtures.
- Controlled depth counter bore on SAE 6 center port accepts standard o-ring.

O-ring (included) to allow manifold stacking and permit 12, 18 or 24 circuits to share one common feed (minor customer modification required).



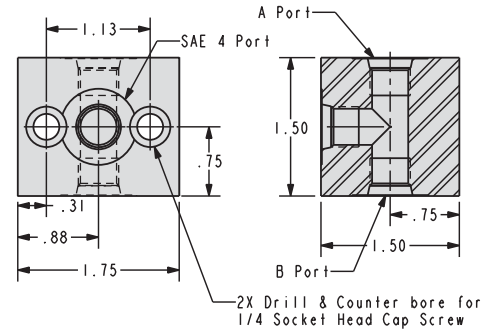
(Plugs Sold Separately)  
(30-6011-44 SAE 4) (30-6011-66 SAE 6)

31-2266-24 Manifold

ILS312200 REV C

### Hydraulic Junction Manifolds

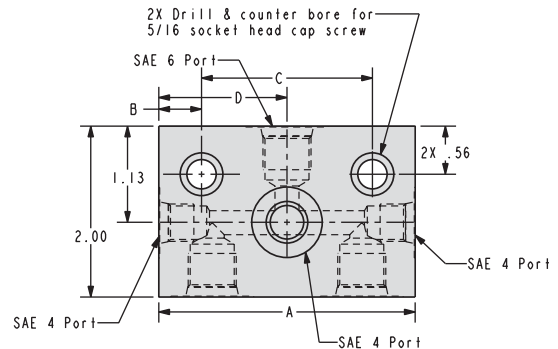
- Available in two block sizes with a choice of five porting configurations between them.
- Convenient, cost effective connection point for mounting quick connect fittings on fixtures and pallets.
- Provide secure interface when connecting between rigid steel tubing and flexible hose.



(Plugs Sold Separately)  
(30-6011-44 SAE 4) (30-6011-66 SAE 6)  
ILS311200 REV C

### Dimensions

Model No.	A	B
31-1241-24	SAE 4	SAE 4
31-1261-24	SAE 6	SAE 4
31-1261-26	SAE 6	SAE 6



(Plugs Sold Separately)  
(30-6011-44 SAE 4) (30-6011-66 SAE 6)  
ILS311201 REV C

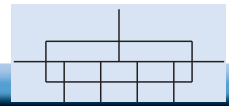
### Dimensions

Model No.	A	B	C	D	E	F
31-1264-24	2.50	0.38	1.75	1.25	1.25	SAE 4
31-1264-46	3.00	0.50	2.00	1.50	1.75	SAE 6

I-1



# Miscellaneous Plumbing

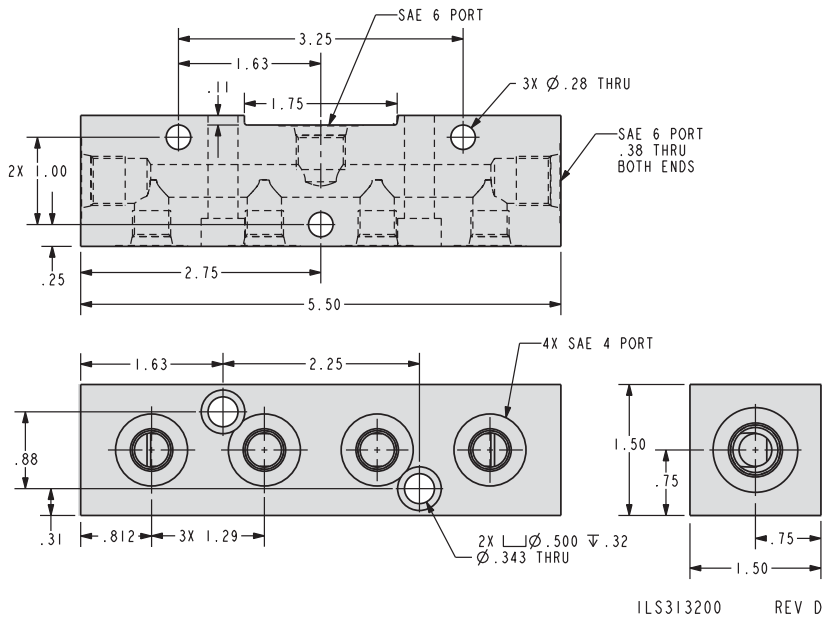


## Manifolds

### Rectangle Manifolds

- Wide spacing between ports allows use with elbow and tee tube fittings.
- SAE 6 back port recessed to accept internal hex plug and permit flush mounting.
- 5/16" and 1/4" mounting holes added to provide greater mounting flexibility.
- Two separate flow paths in single manifold simplifies hydraulic connections and reduces the number of components required in double acting systems.
- Wide spacing between ports allows use with elbow and tee tube fittings.

Order plugs separately.  
 Model No. 30-6011-66  
 for SAE 6 and Model No.  
 30-6011-44 for SAE 4.



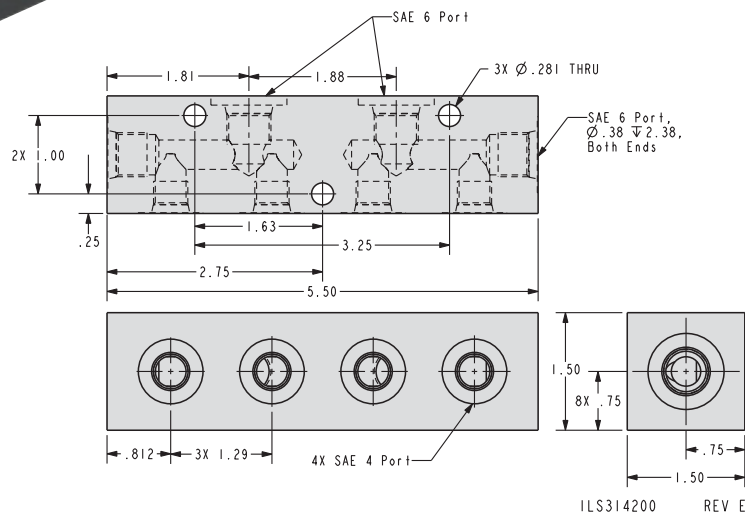
Single Path



Single Path  
 Rectangular Manifold

Model No.
31-3264-01

Dual Path



Dual Path  
 Rectangular Manifold

Model No.
31-4264-24

Order plugs separately.  
 Model No. 30-6011-66 for SAE 6 and  
 Model No. 30-6011-44 for SAE 4

