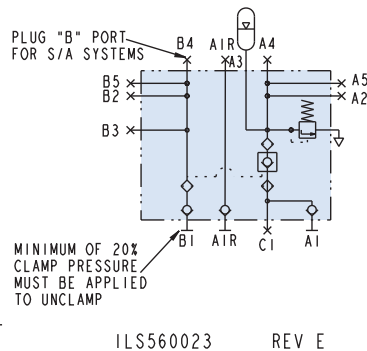
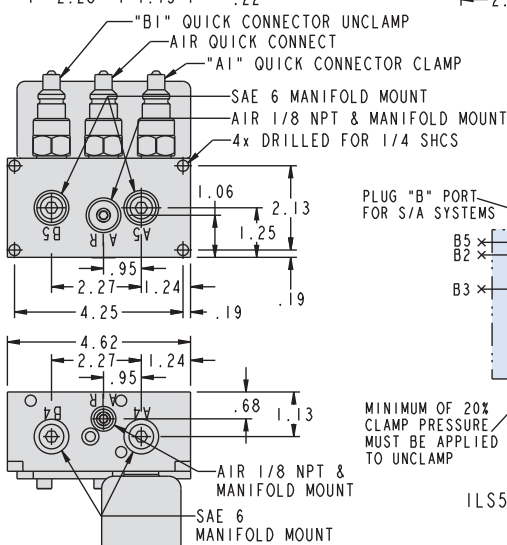
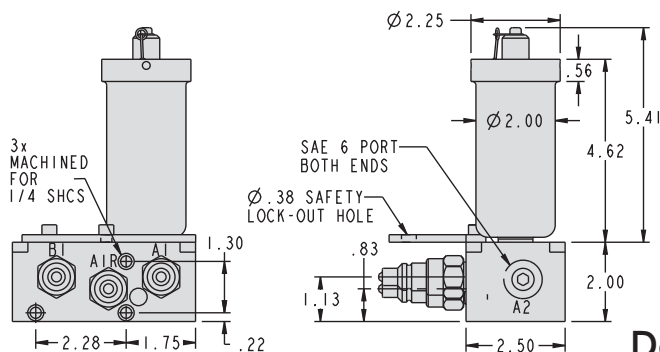


Palletized Fixture Accessories

Automatic Shutoff Valve Decouplers, Two-Handed Operating Handle with Air

Automatic Shutoff Valve Decouplers for Single and Double Acting Systems

- Decouplers are a convenient, self-contained package that includes quick connect couplings, filters, pilot operated check valve, accumulator and over pressure relief valve and separate path for compressed air.
- Internal 25 micron filters for added protection of the pilot operated check valve through ports A1, A2, A3, A4, and C1. Extra filtration at port B1. No filtration at remaining ports. (replacement filter kits Model No. 62-5600-05 or 62-5600-06 for a manifold mount configuration)
- Robust pilot operated check valve with a 1:5 pilot to check ratio for proven long term reliability.
- Internal 25 micron filters for added protection of the pilot operated check valve.
- SAE female external ports and manifold mounting (bottom and rear) connections.
- Single acting pallet circuits require 2 hoses to the Operating Handle for pressure release. For single hose systems see the Manual Shutoff Valve Decoupler, page K-9 and K-10.
- Optional return port B filtration page M-7.
- Handle for this Decoupler unit on page K-7.



Decouplers with Integral Accumulator

Model No.	Pressure Range (psi)	Accumulator Capacity	B Return Port Filter	
			B4	B5
56-0005-21	1,000-3,500	3.6 cu. in.	70-0401-71	70-0437-71
56-0005-22	2,000-5,000	3.2 cu. in.	70-0401-71	70-0437-71

NOTES: Field repair requires a special Check Valve Installation Tool. Please order Model No. 65-6000-00.

Optional Custom-molded 0.190" riser is available. Please order Model No. 45-6005-11, separately.

NOTE: This Automatic Shutoff Valve Decoupler and Operating Handle must be used with a suitable pump (see blue inset on K-5) which includes a 3-Position/4-Port, P-Blocked center ("A" & "B" connected to "Tank") directional control valve for operation of single or double acting systems. One Automatic Shutoff Decoupler can be used to operate only one double acting or one single acting circuit. For operation of a single acting circuit, plug the Decoupler port "B" (as shown in the schematic).

For proper sealing, mating surface must be flat within 0.003 in. with a maximum 63 μ in. R_a surface finish.



K-6

Palletized Fixture Accessories

Handle Docking Module



Handle Docking Module

with controller interface feature

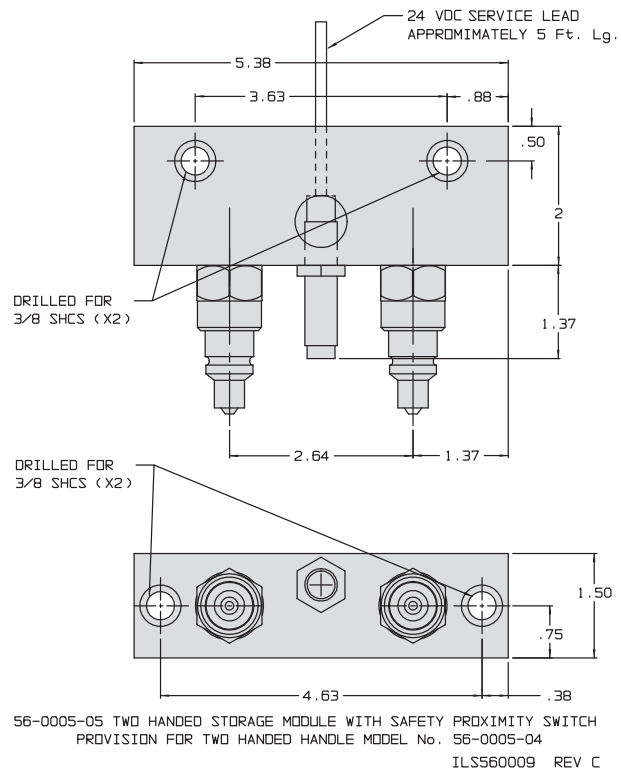
The Docking Module is designed for use with the 2-Handed Automatic Shutoff Pallet Decoupler handle.

- Use of the optional Docking Module confirms that the Two-Handed Pallet Decoupler Handle and hoses are disconnected from the pallet before it is shuttled into the machine.
- Included dummy couplers to connect the Two-Handed Handle, and a proximity switch that senses the Handle is connected to the Module.

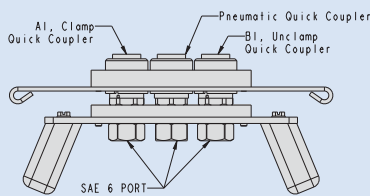
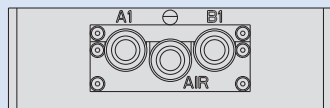
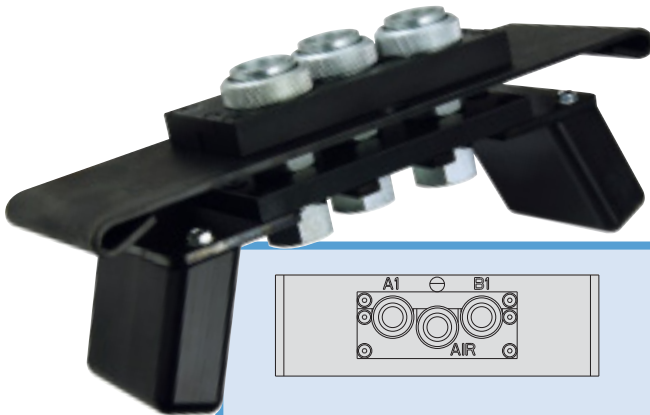
Docking Module

Model No. 56-0005-05

For use with Operating Handle
Model No. 56-0005-04



Handle: Decoupler With Air



ILS560018 REV G

Two-Handed Operating
Handle with Air

Model No. 56-0007-01

For use with Decoupler Models
56-0005-21 and 56-0005-22

Pumps for Automatic Shutoff Valve Decouplers

A. Basic Automatic Shutoff Valve Decoupler Pump: Pump with one 3-Position/4-Port, P-blocked center directional control valve and 3-Position pendant switch providing "Clamp-Disconnect-Unclamp" control (all detented) of the palletized circuit. See page J-11 for standard features of Workholding pumps.

115 VAC, 1 Phase Model No. 55-9242-09-1

230 VAC, 3 Phase Model No. 55-9272-09-1

460 VAC, 3 Phase Model No. 55-9292-09-1

B. Pump with an adjustable clamp and unclamp pressure regulator used with a 3-Position/4-Port P-blocked center valve. The valve is pendant controlled. Pendant switch must be held in either clamp or unclamp condition to fully cycle devices. Devices will stop when the pendant is released.

115 VAC, 1 Phase Model No. 55-9242-65-1

230 VAC, 3 Phase Model No. 55-9272-65-1

460 VAC, 3 Phase Model No. 55-9292-65-1

C. Pneumatic Specifications:

250 psig Max Pressure

15 CFM Max Flow Rate

K-7

