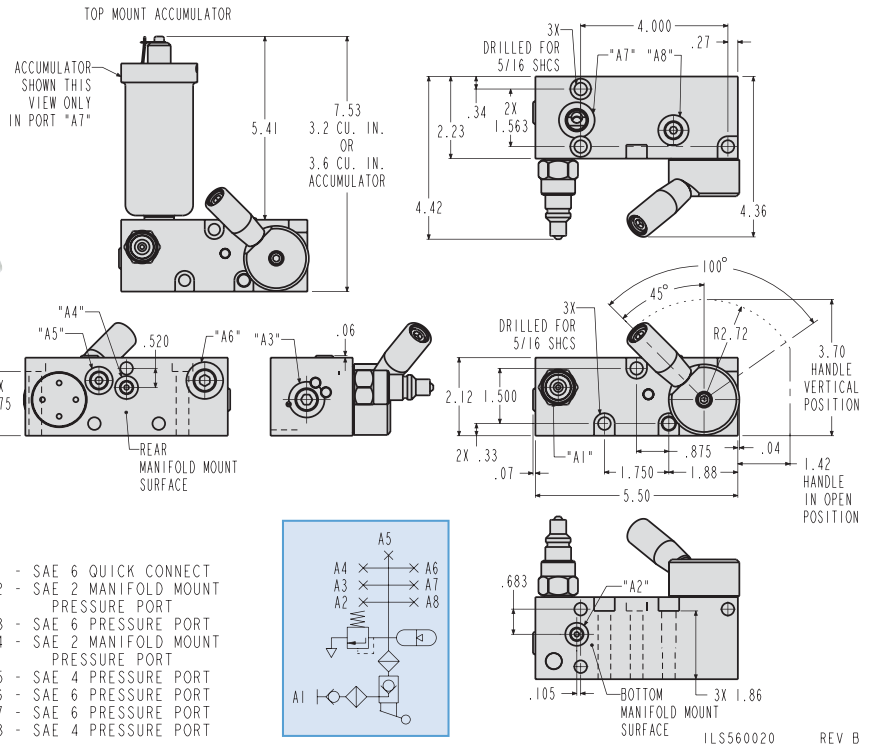


Palletized Fixture Accessories

Manual Shutoff Valve Decouplers, Self-Closing Valve



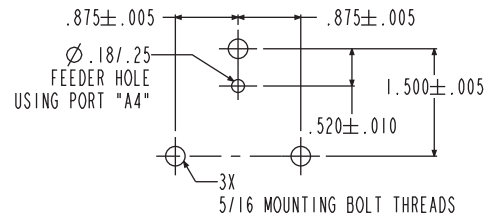
Single Acting Manual Shutoff Valve Decoupler with Self-Closing Valve

Decoupler with External Accumulator
 For operation with Female Quick Connect Coupling
 Model No. 30-7827-66.

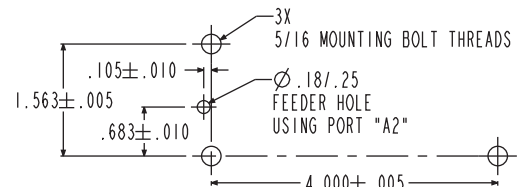
- This Decoupler is a convenient, self-contained package that includes a male quick disconnect with dust cover, accumulator, filter screens on both sides of system, and an over-pressure relief valve. (Pressure gauge sold separately see page M-18.)
- Manual shutoff valve automatically closes on system pressurization. Valve is manually opened to release system pressure back to the pump.
- External accumulator can be repositioned into your decoupler mounting and pallet layout.
- Manifold mountable from the bottom or the rear surface.
- External accumulator can be repositioned into ports A3, A6, or A7 to accommodate the decoupler mounting and pallet layout.
- Pressure gauge can be mounted in A5 or A8 port to accommodate the decoupler mounting and pallet layout.
- BHC™ Finish.

K-10

REAR MANIFOLD MOUNT INTERFACE FOR 56-0006-06 AND 56-0006-07



BOTTOM MANIFOLD MOUNT INTERFACE FOR 56-0006-06 AND 56-0006-07



ILS560027 REV A

S/A Decoupler Self-closing Valve

Model No.	System Operating Pressure		Accumulator Model No.	Quick Connect Part No.
	Min	Max		
56-0006-06	2,000 psi	5,000 psi	10-1016-01	30-7727-66
56-0006-07	1,000 psi	3,500 psi	10-1016-02	30-7727-66

For proper sealing, mating surface must be flat within 0.003 in. with a maximum 63 μ in. R_a surface finish.

NOTE: This Self-closing Manual Shutoff Valve Decoupler must be used with a suitable pump which includes a 2-Position/3-Port, directional control valve for operation of one single acting circuit.

