

# Palletized Fixture Accessories

## Manual Shutoff Valve Decouplers

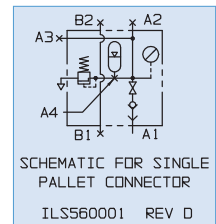
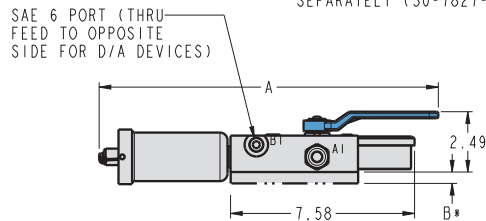
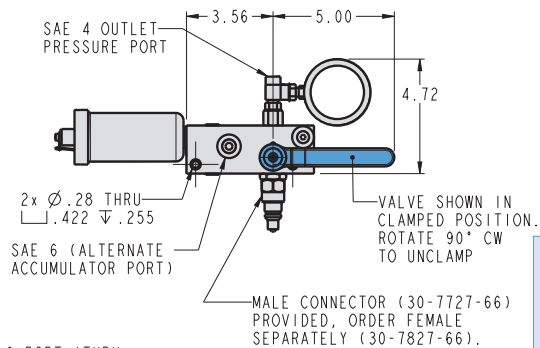
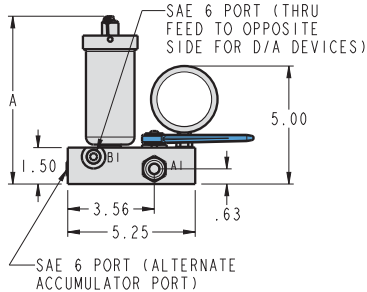
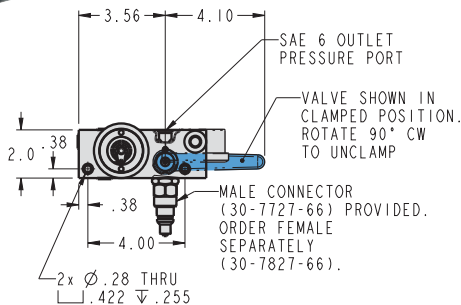
### Manual Shutoff Valve Decoupler for Single Acting Systems



- This Decoupler is a convenient, self-contained package that includes a quick connect coupling, manual shutoff valve with handle, accumulator (choose from horizontal or vertical arrangement), filter screen, pressure gauge, and over-pressure relief valve.
- Models available for circuits operating at 2,000-5,000 psi and 1,000-3,500 psi with standard and small accumulators.
- Includes auxiliary ports that can be used for double acting pallet circuits or compressed air.

### Decoupler with External Accumulator

For operation with Female Quick Connect Coupling Model No. 30-7827-66 (page H-6)



ILS560000 REV H

### Vertical Accumulator Manual Shutoff Valve Decoupler

Model No.	Pressure Range (psi.)	Accumulator Capacity (cu. in.)	A
56-0001-01	2000-5000	3.2	6.91
56-0001-02	1000-3500	3.6	6.91
56-0001-03	2000-5000	1.0	5.72

### Horizontal Accumulator Manual Shutoff Valve Decoupler

Model No.	Pressure Range (psi.)	Accumulator Capacity (cu. in.)	A	B Min
56-0002-01	2000-5000	3.2	14.47	0.50
56-0002-02	1000-3500	3.6	14.47	0.50
56-0002-03	2000-5000	1.0	13.28	0.25

\* Depending on where the Decoupler is mounted, a spacer (not furnished) may be needed to offset the overhang of the accumulator.

### Pumps for Manual Shutoff Valve Decouplers

A. Basic Manual Shutoff Valve Decoupler Pump: Workholding Pumps with one 2-Position/3-Port, normally closed directional control valve and 2-Position pendant switch providing "Clamp-Unclamp/Disconnect" control (both detented) of the palletized single acting circuit. See page J-11 for standard features of all Workholding pumps.

115 VAC, 1 Phase Model No. 55-9242-33-1

230 VAC, 3 Phase Model No. 55-9272-33-1

460 VAC, 3 Phase Model No. 55-9292-33-1

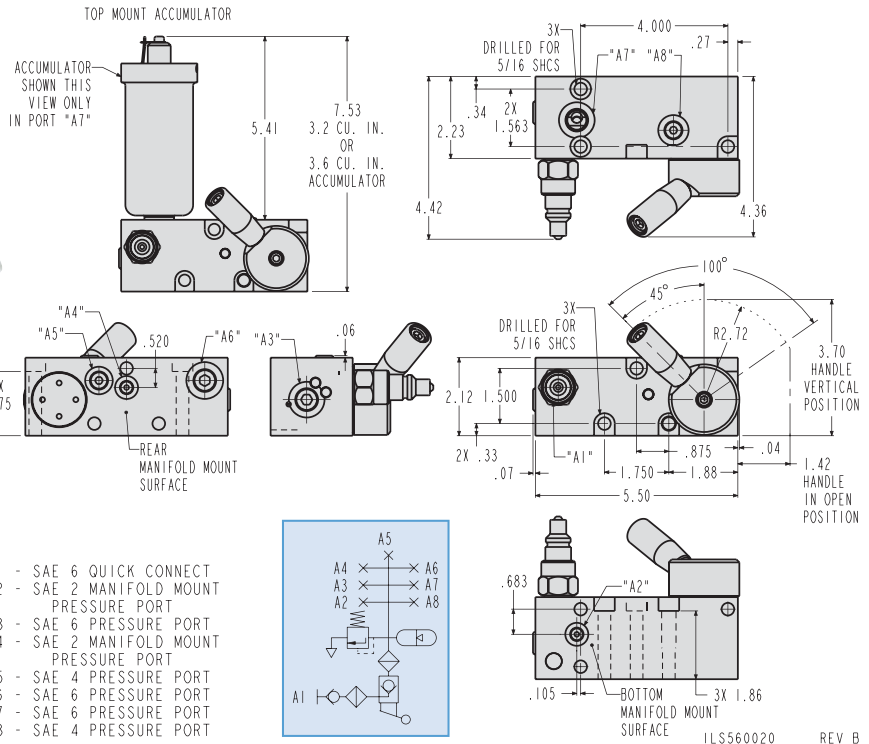
B. Other Manual Shutoff Valve Decoupler Pumps: Vekttek offers a matrix of pumps with a wide range of electric and hydraulic control features for use with the Manual Shutoff Decouplers to control both single and double acting circuits. Contact Vekttek with your specific needs for technical support on other suitable pump configurations.

NOTE: This Manual Shutoff Valve Decoupler must be used with a suitable pump (see chart at left) which includes a 2-Position/3-Port, directional control valve for operation of one single acting circuit. Contact Vekttek for considerations in the use of this Manual Shutoff Decoupler to control double acting circuits. Also see the Automatic Shutoff Valve Decouplers on pages K-2 through K-6.

For proper sealing, mating surface must be flat within 0.003 in. with a maximum 63  $\mu$  in.  $R_a$  surface finish.

# Palletized Fixture Accessories

## Manual Shutoff Valve Decouplers, Self-Closing Valve



### Single Acting Manual Shutoff Valve Decoupler with Self-Closing Valve

**Decoupler with External Accumulator**  
 For operation with Female Quick Connect Coupling Model No. 30-7827-66.

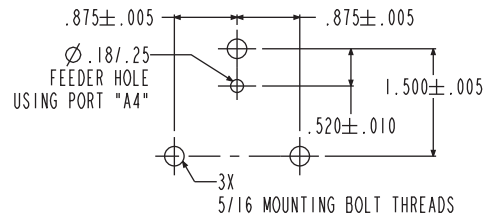
- This Decoupler is a convenient, self-contained package that includes a male quick disconnect with dust cover, accumulator, filter screens on both sides of system, and an over-pressure relief valve. (Pressure gauge sold separately see page M-18.)
- Manual shutoff valve automatically closes on system pressurization. Valve is manually opened to release system pressure back to the pump.
- External accumulator can be repositioned into your decoupler mounting and pallet layout.
- Manifold mountable from the bottom or the rear surface.
- External accumulator can be repositioned into ports A3, A6, or A7 to accommodate the decoupler mounting and pallet layout.
- Pressure gauge can be mounted in A5 or A8 port to accommodate the decoupler mounting and pallet layout.
- BHC™ Finish.

K-10

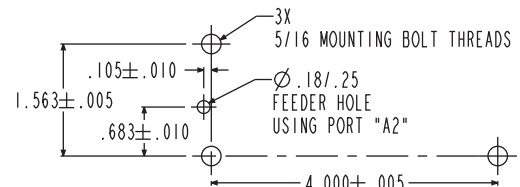
### S/A Decoupler Self-closing Valve

Model No.	System Operating Pressure		Accumulator Model No.	Quick Connect Part No.
	Min	Max		
56-0006-06	2,000 psi	5,000 psi	10-1016-01	30-7727-66
56-0006-07	1,000 psi	3,500 psi	10-1016-02	30-7727-66

REAR MANIFOLD MOUNT INTERFACE FOR 56-0006-06 AND 56-0006-07



BOTTOM MANIFOLD MOUNT INTERFACE FOR 56-0006-06 AND 56-0006-07



ILS560027 REV A

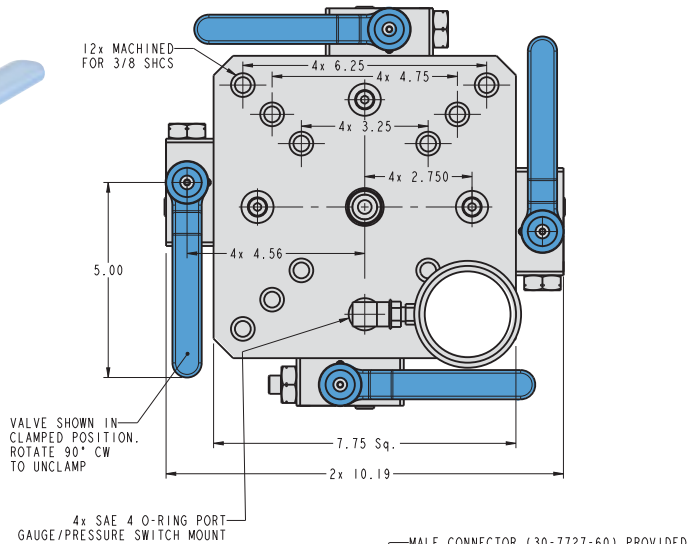
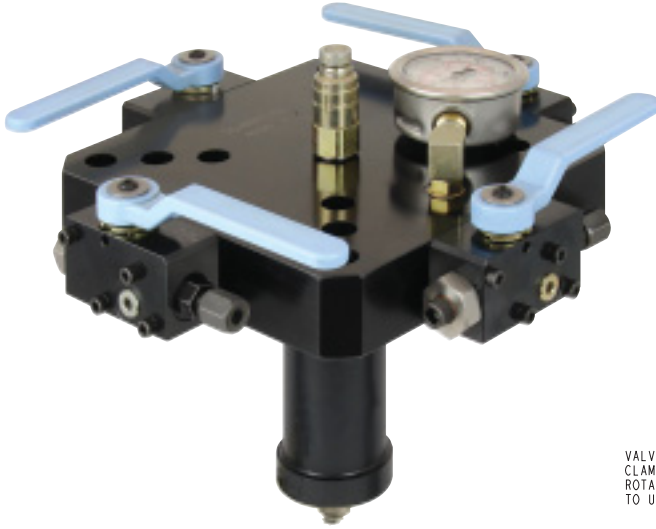
For proper sealing, mating surface must be flat within 0.003 in. with a maximum 63 μ in.  $R_a$  surface finish.

**NOTE:** This Self-closing Manual Shutoff Valve Decoupler must be used with a suitable pump which includes a 2-Position/3-Port, directional control valve for operation of one single acting circuit.



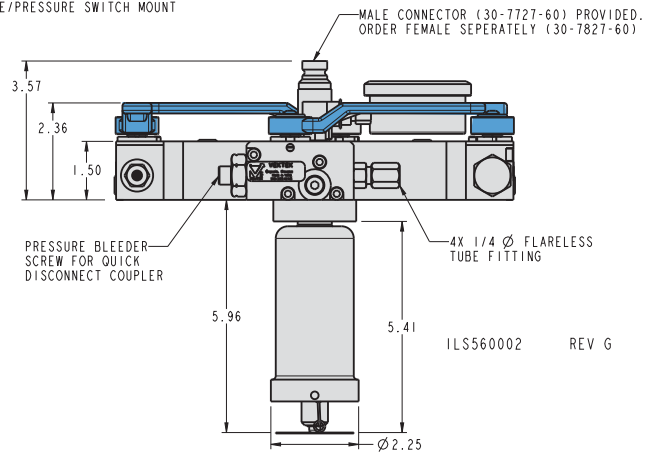
# Palletized Fixture Accessories

## Manual Shutoff Valves Top Plate, Four-Sided



## Manual Shutoff Tombstone Top Plate for Single Acting Systems

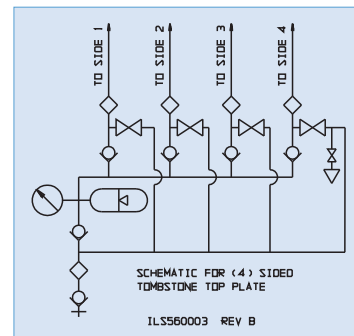
- Provides separate unclamp control of up to four faces of a tombstone or multi-circuit pallet for independent loading and unloading.
- Tombstone Top Plates are convenient, self-contained packages that include a quick connect coupling, manual shutoff valves, accumulator, filter screens, check valves, pressure gauge(s), and a manual pressure bleed port.
- The Four-sided Tombstone Top Plate is provided with one common pressure gauge and auxiliary ports for optional pressure gauges at each shutoff valve.
- Models available for circuits operating at 2,000-5,000 psi and 1,000-3,500 psi pressures.



## Four-Sided Tombstone Top Plate

Model No.	Range
56-0003-01	2,000 - 5,000 psi
56-0003-02	1,000 - 3,000 psi

For Operation with Female Quick Connect Coupling Model No, 30-7827-60 (page H-6)



A. Basic Manual Shutoff Valve Top Plate Pump: Workholding pump with one 2-Position/3-Port, normally closed directional control valve and 2-Position pendant switch providing "Clamp-Unclamp/Disconnect" control (momentary-detent) of the column single acting circuits. These pumps RUN only when the pendant switch is held in the "Clamp" position. See page J-11 for standard features of all Workholding pumps.

115 VAC, 1 Phase Model No. 55-9242-35-1

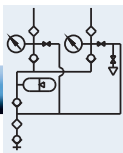
230 VAC, 3 Phase Model No. 55-9272-35-1

460 VAC, 3 Phase Model No. 55-9292-35-1

B. Other Manual Shutoff Valve Decoupler Pumps: Vekttek offers a matrix of pumps with a wide range of electric and hydraulic control features for use with the Manual Shutoff Valve Top Plates. Contact Vekttek with your specific needs for technical support on other suitable pump configurations.

NOTE: These Manual Shutoff Valve Top Plates must be used with a suitable pump (see chart) which includes a 2-Position/3-Port, directional control valve for operation of single acting circuits only. Each valve on a Manual Top Plate can be used to operate only one single acting circuit. For operation of double acting circuits, see the Automatic Shutoff Valve Decouplers on pages K-2 through K-6.





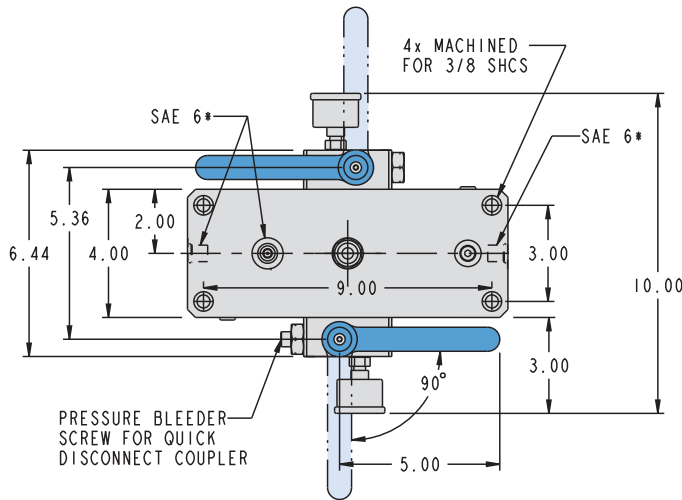
# Palletized Fixture Accessories

## Manual Shutoff Valves Top Plate, Two-Sided



### Manual Shutoff Valve Tombstone Top Plates for Single Acting Systems

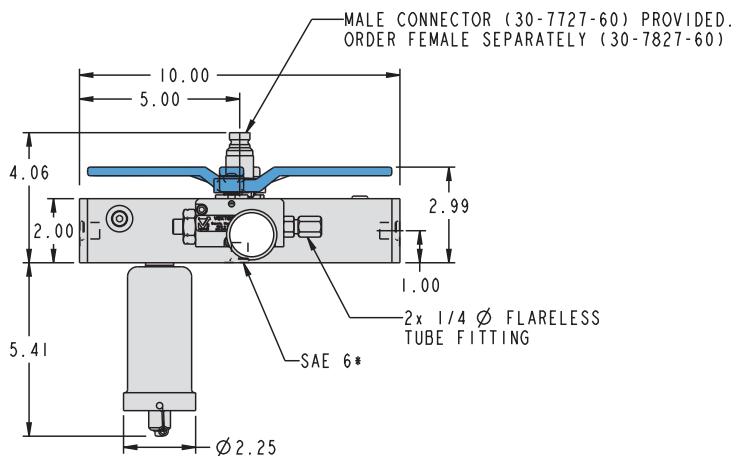
- Provides separate unclamp control of up to two faces of a tombstone or multi-circuit pallet for independent loading and unloading.
- Tombstone Top Plates are convenient, self-contained packages that include a quick connect coupling, manual shutoff valves, accumulator, filter screens, check valves, pressure gauge, and a manual pressure bleed port.
- The Two-sided Top Plate is provided with a gauge at each shutoff valve.
- Models available for circuits operating at 1,000-5,000 psi and 1,000-3,500 psi.



### Two-Sided Tombstone Top Plate

Model No	Circuits Operating at
56-0004-01	2,000-5,000 psi
56-0004-02	1,000-3,500 psi

For operation with Female Quick Connect Coupling Model No. 30-7827-60 (page H-6).



\*ALTERNATE ACCUMULATOR MOUNTING PORTS

ILS560004

REV E

**NOTE:** These Manual Shutoff Valve Top Plates must be used with a suitable pump (see page K-11) which includes a 2-Position/3-Port, directional control valve for operation of single acting circuits only. Each valve on a Manual Top Plate can be used to operate only one single acting circuit. For operation of double acting circuits, see the Automatic Shutoff Valve Decouplers on pages K-2 through K-6.



**K-12**