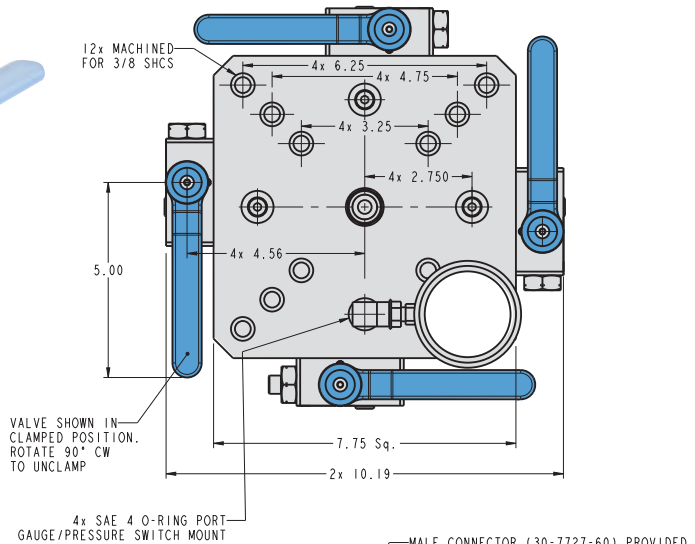
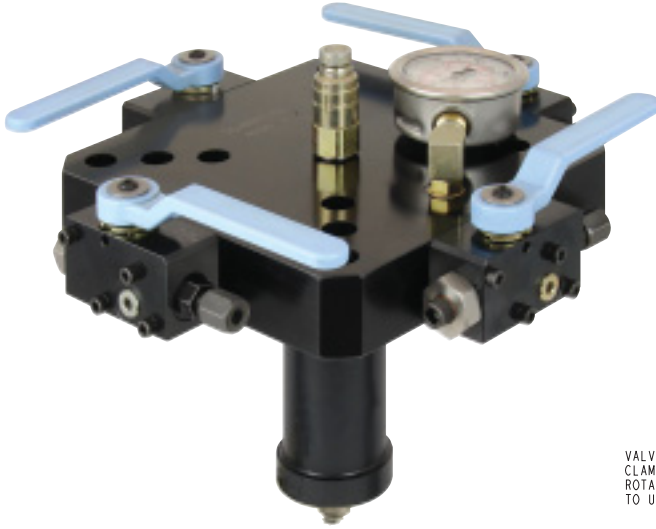


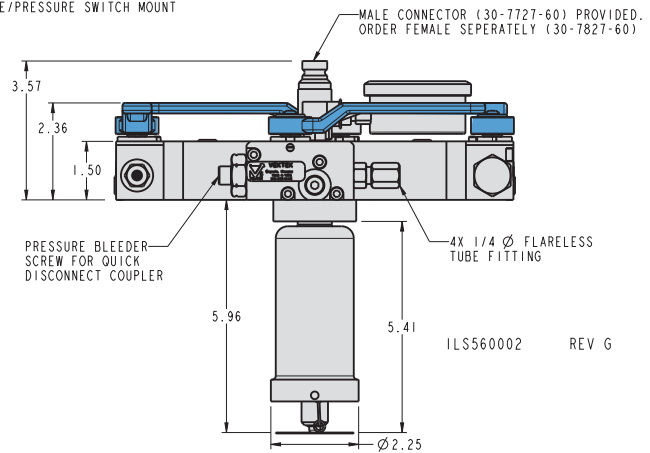
# Palletized Fixture Accessories

## Manual Shutoff Valves Top Plate, Four-Sided



## Manual Shutoff Tombstone Top Plate for Single Acting Systems

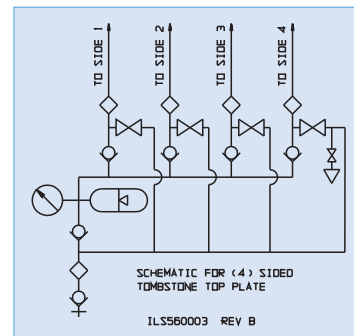
- Provides separate unclamp control of up to four faces of a tombstone or multi-circuit pallet for independent loading and unloading.
- Tombstone Top Plates are convenient, self-contained packages that include a quick connect coupling, manual shutoff valves, accumulator, filter screens, check valves, pressure gauge(s), and a manual pressure bleed port.
- The Four-sided Tombstone Top Plate is provided with one common pressure gauge and auxiliary ports for optional pressure gauges at each shutoff valve.
- Models available for circuits operating at 2,000-5,000 psi and 1,000-3,500 psi pressures.



## Four-Sided Tombstone Top Plate

Model No.	Range
56-0003-01	2,000 - 5,000 psi
56-0003-02	1,000 - 3,000 psi

For Operation with Female Quick Connect Coupling Model No, 30-7827-60 (page H-6)



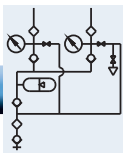
A. Basic Manual Shutoff Valve Top Plate Pump: Workholding pump with one 2-Position/3-Port, normally closed directional control valve and 2-Position pendant switch providing "Clamp-Unclamp/Disconnect" control (momentary-detent) of the column single acting circuits. These pumps RUN only when the pendant switch is held in the "Clamp" position. See page J-11 for standard features of all Workholding pumps.

115 VAC, 1 Phase Model No. 55-9242-35-1  
 230 VAC, 3 Phase Model No. 55-9272-35-1  
 460 VAC, 3 Phase Model No. 55-9292-35-1

B. Other Manual Shutoff Valve Decoupler Pumps: Vekttek offers a matrix of pumps with a wide range of electric and hydraulic control features for use with the Manual Shutoff Valve Top Plates. Contact Vekttek with your specific needs for technical support on other suitable pump configurations.

NOTE: These Manual Shutoff Valve Top Plates must be used with a suitable pump (see chart) which includes a 2-Position/3-Port, directional control valve for operation of single acting circuits only. Each valve on a Manual Top Plate can be used to operate only one single acting circuit. For operation of double acting circuits, see the Automatic Shutoff Valve Decouplers on pages K-2 through K-6.





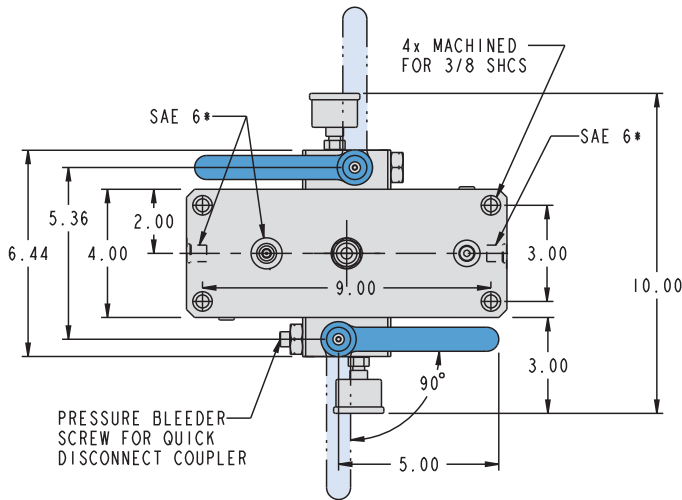
# Palletized Fixture Accessories

## Manual Shutoff Valves Top Plate, Two-Sided



### Manual Shutoff Valve Tombstone Top Plates for Single Acting Systems

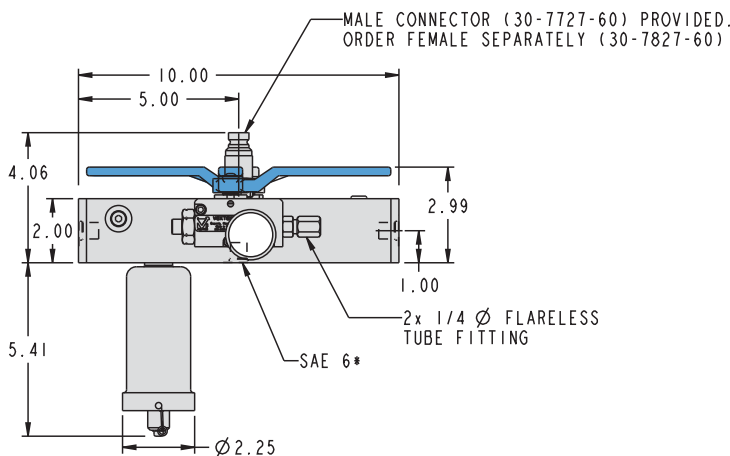
- Provides separate unclamp control of up to two faces of a tombstone or multi-circuit pallet for independent loading and unloading.
- Tombstone Top Plates are convenient, self-contained packages that include a quick connect coupling, manual shutoff valves, accumulator, filter screens, check valves, pressure gauge, and a manual pressure bleed port.
- The Two-sided Top Plate is provided with a gauge at each shutoff valve.
- Models available for circuits operating at 1,000-5,000 psi and 1,000-3,500 psi.



### Two-Sided Tombstone Top Plate

Model No	Circuits Operating at
56-0004-01	2,000-5,000 psi
56-0004-02	1,000-3,500 psi

For operation with Female Quick Connect Coupling Model No. 30-7827-60 (page H-6).



\*ALTERNATE ACCUMULATOR MOUNTING PORTS

ILS560004

REV E

**NOTE:** These Manual Shutoff Valve Top Plates must be used with a suitable pump (see page K-11) which includes a 2-Position/3-Port, directional control valve for operation of single acting circuits only. Each valve on a Manual Top Plate can be used to operate only one single acting circuit. For operation of double acting circuits, see the Automatic Shutoff Valve Decouplers on pages K-2 through K-6.

K-12

