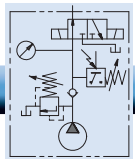


# Power Supplies



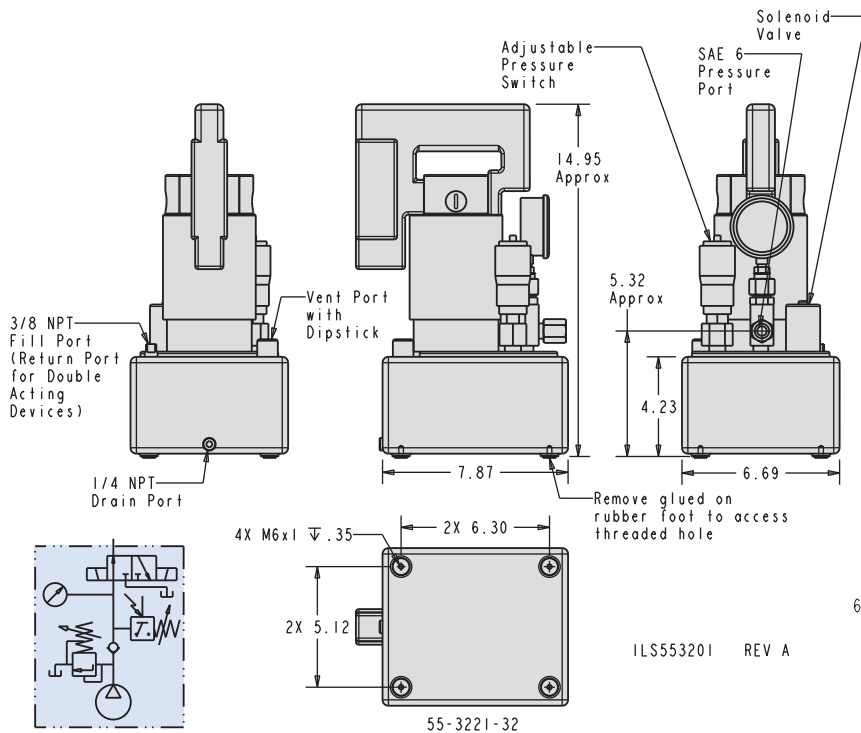
## Portable 1/3 hp Electric Hydraulic Pump

### Portable Electric/Hydraulic Pump

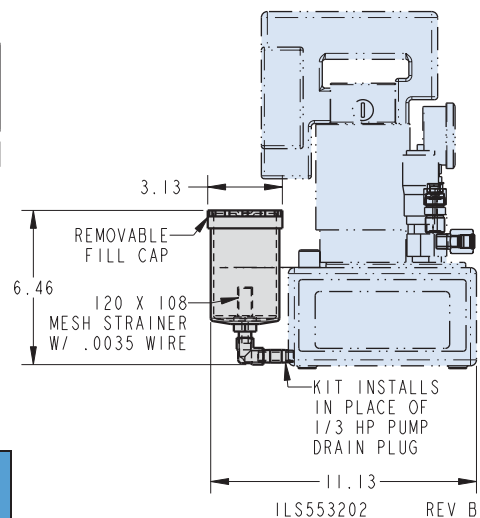
- New enclosed motor housing eliminates entry of motor damaging environmental debris.
- New beefier motor extends life and runs quieter than the previous model.
- Builds to preset pressure, maintains continuous pressure until switched off and will not release until electrically signaled.
- Fully self-contained, yet easily portable, weighs only 32 lb. with oil.
- Hydraulic pressure switch externally adjustable from 725 to 5,000 psi.
- Two-stage pump flows 120 cu. in. per minute at low pressure; 12 cu. in. per minute at maximum pressure.
- Integral safety overload valve, factory set at 5,000 psi.
- Reservoir usable oil capacity: 108 cu. in.
- Equipped with single-phase 115V 1/3 hp motor.
- Installed length of the pendant cable is 9 feet.



Extreme portability and easy pressure adjustment make this a versatile pump that can be fitted with quick connectors to serve as the power source for fixtures used in various plant locations. To ensure long, trouble-free service, VektorFlo® power supplies have been specially engineered to operate at 5,000 psi, optimum pressure for power workholding. The pump automatically holds the pressure set on the pressure switch and automatically restarts should a pressure drop occur. The compact motor draws only 7.2 amps at full pressure. Nothing is needed other than a hose to put this self-contained unit to work.



### Optional Filler Kit Sold Separately



### Optional Filler Kit

<b>Model No.</b>
62-5530-02

Model No.	Cylinder Use	Valve Type*	Cylinder Operation	Motor
55-3221-32	Single Acting or Double Acting*	2 Way 3 Port Electric	Advance, Hold, Release	1/3 hp, 115V/7 amp 1 ph, 50/60 Hz
Pump Flow/Minute		Reservoir Capacity		
100 psi	5000 psi	Gross	Useable	
120 cu. in.	12 cu. in.	122 cu. in.	108 cu. in.	

**WARNING!** The use of spool valves invalidates the warranty on VektorFlo® pumps.

\* Double acting systems require the use of a remote valve and return line. Valve information in section N. Available with SAE 6 outlet port.

