

Screw Pumps, Threaded Body or Block Body

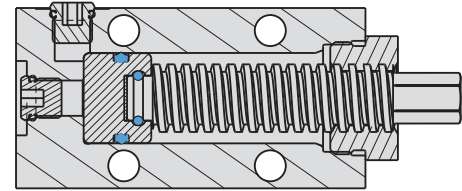
Threaded Body and Block Body Style Screw Pump

- Simple, inexpensive power supply for small systems.
- Ideally suited to powering work supports when used on manual clamping fixtures.
- Heavy duty threaded screw can be driven by a precision "nut runner" for fast and precise actuation (maximum RPM = 500).
- Block style bolts down, threaded body can be mounted through a bulkhead with the two retaining collars provided.



Max. Working Pressure.....5,000 psi
 Capacity.....1.57 cu. in.
 Volume per Revolution..... 0.13 cu. in.
 Body BHC™ heat treated alloy steel
 Screw Hardened acme (6 tpi) threads

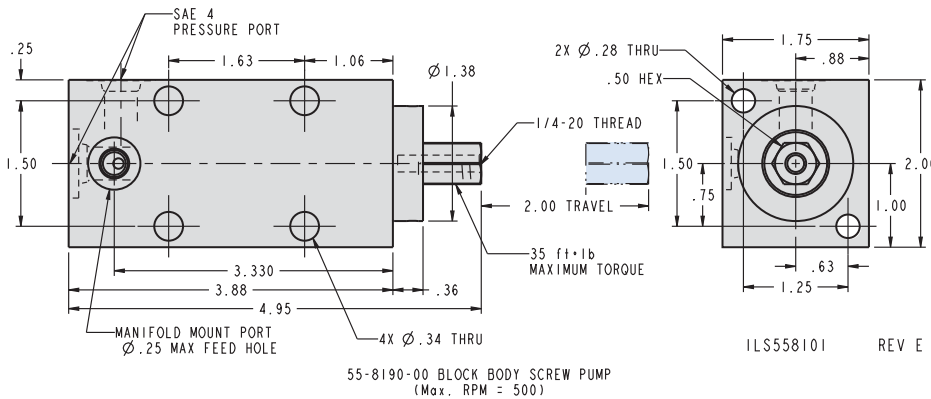
NOTE: Accumulator effect of Vekttek hose is required for use with the Vekttek screw pump. We recommend a hose on all screw pump installations.



SECTION B-B

ILS558100

REV F

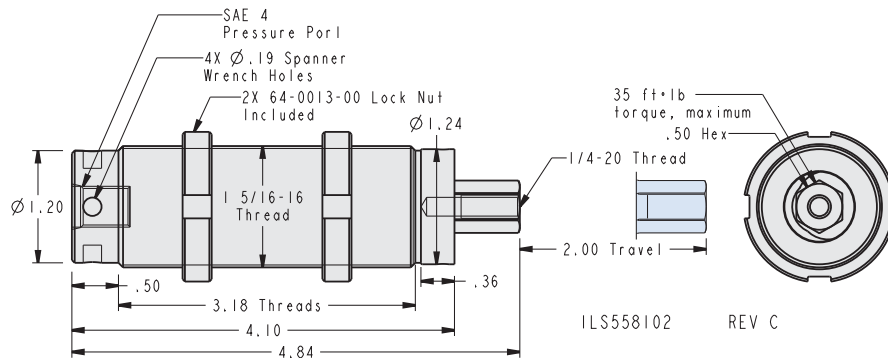


Block Body Screw Pump

Model No.

55-8190-00

J-15



Threaded Body Screw Pump

Model No.

55-8190-01

Applied Torque Produces Approximate Output Pressure

Torque	Pressure
10 Ft. Lb.	1,000 psi
20 Ft. Lb.	2,000 psi
25 Ft. Lb.	3,000 psi
30 Ft. Lb.	4,000 psi
35 Ft. Lb.	5,000 psi
Screw Pump capacity 1.57 cu. in.	
7/8 & 1 1/16 Hex adapters are supplied with each screw pump.	

ILS558103 REV B

