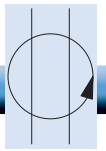
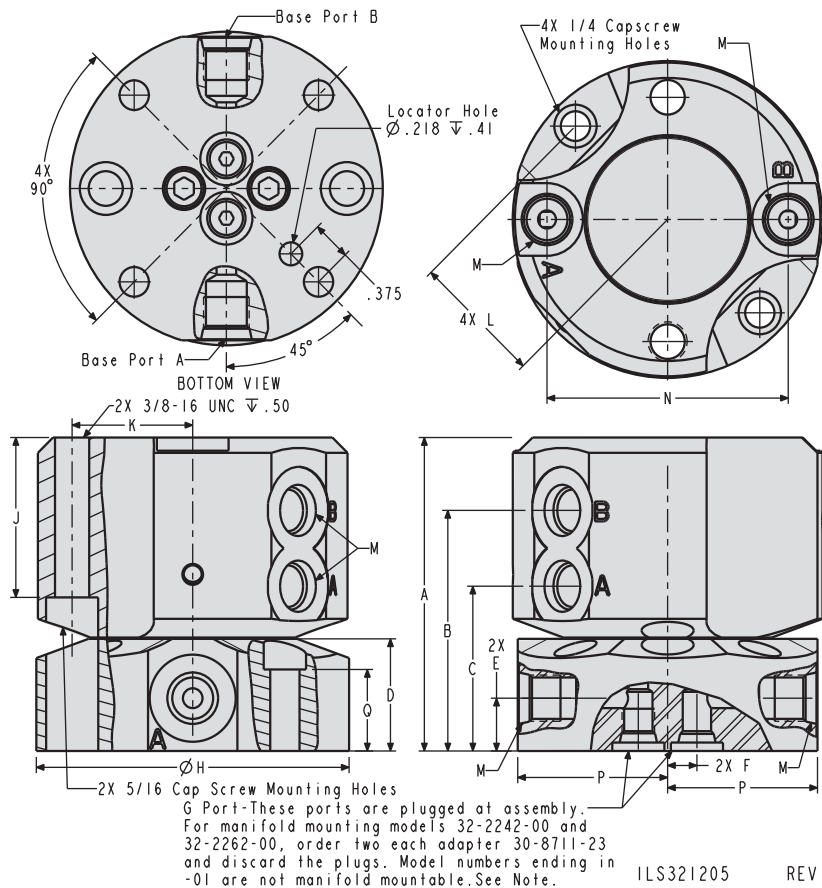


# Miscellaneous Plumbing



## Rotating Union, 2 Path



For proper sealing, mating surface must be flat within 0.003 in. with a maximum 32  $\mu$  in.  $R_a$  surface finish.

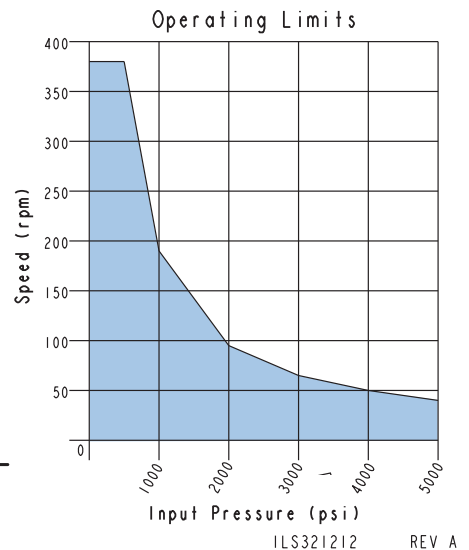
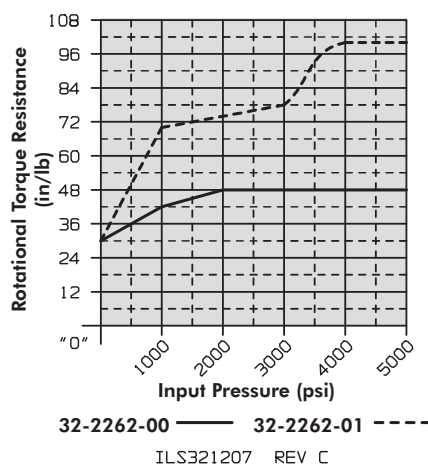
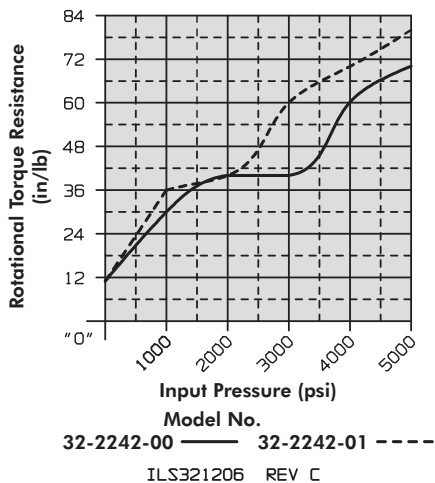
### Operating Parameter Guidelines

- Max Temperature: 40°-160° F.
- Air may be run in any available passage.
- Max. RPM see table page I-3.

ILS321205 REV P

## Dimensions

| Model No.  | A    | B    | C    | D    | E    | F    | G     | H    | J    | K     | L    | M     | N     | P    | Q    |
|--|------|------|------|------|------|------|-------|------|------|-------|------|-------|-------|------|------|
| <b>Adapter Model No. 30-8711-23 is needed for manifold mounting. Order separately.</b> |      |      |      |      |      |      |       |      |      |       |      |       |       |      |      |
| 32-2242-00   | 2.97 | 2.28 | 1.56 | 1.06 | 0.50 | 0.28 | SAE 2 | 3.00 | 1.51 | 1.156 | 1.25 | SAE 4 | 2.312 | 1.46 | 0.77 |
| 32-2262-00   | 3.34 | 2.56 | 1.73 | 1.13 | 0.63 | 0.38 | SAE 2 | 3.47 | 1.82 | 1.375 | 1.50 | SAE 6 | 2.750 | 1.68 | 0.84 |
| <b>Models 32-2242-01 and 32-2262-01 are not adaptable for manifold mounting.</b>       |      |      |      |      |      |      |       |      |      |       |      |       |       |      |      |
| 32-2242-01   | 3.06 | 2.38 | 1.66 | 1.16 | 0.60 | 0.39 | SAE 4 | 3.00 | 1.51 | 1.156 | 1.25 | SAE 4 | 2.312 | 1.46 | 0.87 |
| 32-2262-01   | 3.34 | 2.56 | 1.73 | 1.13 | 0.63 | 0.47 | SAE 6 | 3.47 | 1.82 | 1.375 | 1.50 | SAE 6 | 2.750 | 1.68 | 0.85 |



# Miscellaneous Plumbing

## Rotating Unions

### Standard Features Single, Dual, Quad, 6, 8 and 12 Flow Path Models

Rotating unions are a rotary connection, feeding pressure to fixtures while allowing full 360° rotation of the fixture with or without pressure. A machine or independent indexer may do this indexing. Rotating unions allow “live” hydraulic power to be supplied to fixtures during the machining cycle.

- Single, dual, quad, 6, 8, and 12 path models are available to fit your application.
- SAE 6 models are required for major fluid distribution and all remote valve systems. SAE 4 models may be used on double acting systems and small single acting systems where speed of retraction is not critical.
- Most units may be either manifold mounted or used with standard fittings.

The leak free design eliminates the need for a drain or vent line required by standard industrial models. This feature also reduces the demand for pressure present in industrial models that can cause pump cycling.

All units include internal bearings to increase life under loaded applications. Quad path models are often installed in machine doors to feed two independent dual path models on fixtures, making VektorFlo® the choice for all of your machine clamping needs. Integral mounting holes and multiple plumbing options make VektorFlo® designs easier to use than specialized larger industrial model.



### Maximum RPM at Various Pressures with Petroleum Based Fluids

| Model No.  | Configuration          | 500 psi | 1000 psi | 2000 psi | 3000 psi | 4000 psi | 5000 psi |
|------------|------------------------|---------|----------|----------|----------|----------|----------|
| 32-1261-00 | Single Path            | 915     | 460      | 230      | 150      | 115      | 90       |
| 32-1241-00 | Single Path            | 460     | 230      | 115      | 75       | 60       | 50       |
| 32-1261-01 |                        |         |          |          |          |          |          |
| 32-1461-41 | Single Path            | 380     | 190      | 95       | 65       | 50       | 40       |
| 32-2242-00 | Dual Path              | 380     | 190      | 95       | 65       | 50       | 40       |
| 32-2262-00 |                        |         |          |          |          |          |          |
| 32-2242-01 |                        |         |          |          |          |          |          |
| 32-2262-01 |                        |         |          |          |          |          |          |
| 32-4244-00 | Quad Path              | 380     | 190      | 95       | 65       | 50       | 40       |
| 32-4264-00 |                        |         |          |          |          |          |          |
| 32-6246-00 | 6 Path                 | 180     | 140      | 80       | 50       | 40       | 30       |
| 32-6246-01 | 6 Path with Slip Ring  | 100     | 100      | 80       | 50       | 40       | 30       |
| 32-6246-00 |                        |         |          |          |          |          |          |
| 32-8248-00 | 8 Path                 | 180     | 140      | 80       | 50       | 40       | 30       |
| 32-8248-01 | 8 Path with Slip Ring  | 100     | 100      | 80       | 50       | 40       | 30       |
| 32-8248-00 |                        |         |          |          |          |          |          |
| 32-1224-12 | 12 Path                | 150     | 110      | 60       | 40       | 30       | 20       |
| 32-1224-13 |                        |         |          |          |          |          |          |
| 32-1224-12 | 12 Path with Slip Ring | 100     | 100      | 60       | 40       | 30       | 20       |
| 32-1224-13 |                        |         |          |          |          |          |          |

ILS321200 REV F

