

# Special Use Clamps

## Part Crowder

### Single Acting

- Use fewer components to secure parts.
- Crowding and clamping pressure applied at the exact same point on parts.
- Spring contact force.
- Hydraulic holding force.
- Select from 3 cylinder capacities: 550 lbs, 980 lbs, and 2,200 lbs.
- Flexible plumbing options accommodate either manifold mounting or SAE.
- BHC™ (Black Hard Coat) finish.



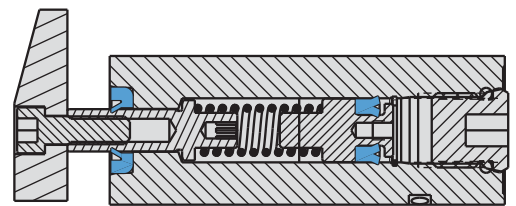
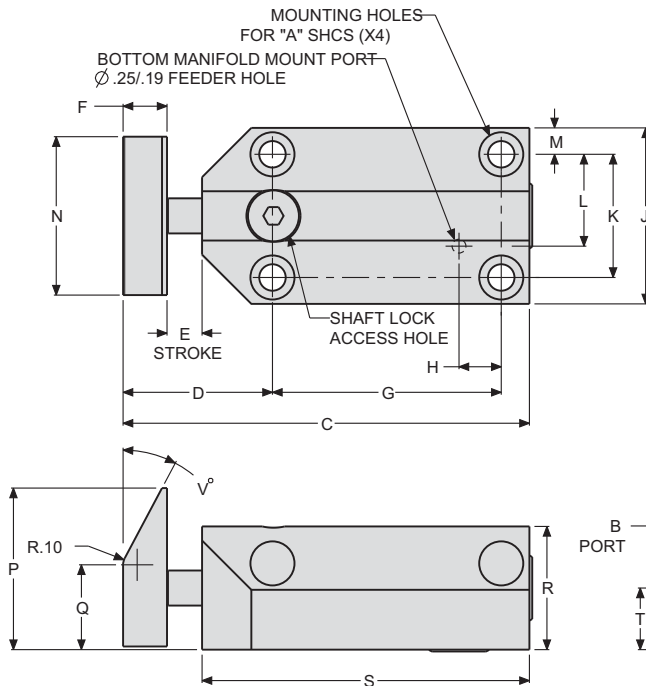
E-1

Model No.*	Spring Loaded Contact Force (lb)	Hydraulic Assist Cylinder Capacity (lb)**	Piston Area (sq. in.)	Oil Capacity (cu. in.)
15-9104-00	5.5-11	550	0.110	0.108
15-9105-00	14-20	980	0.196	0.194
15-9108-00	21-27	2200	0.442	0.350

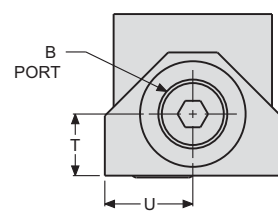
\* Add an "F" to the end of the model number to order fluorocarbon seals.

\*\* Cylinder capacities are listed at 5,000 psi maximum operating pressure. The output force is adjustable by varying the hydraulic system pressure. To determine the approximate output force for your application, multiply the Piston Area times Your System Operating Pressure. (Actual force may vary slightly due to friction loss, seal and wiper drag, and/or return springs.)

\*\*\* Shaft lock feature prevents the shaft from rotating while changing the contact plate. For use, see instructions on the parts list.



ILS159101 REV A



ILS159100 REV F

For proper sealing, mating surface must be flat within 0.003 in. with a maximum 63 μ in. R<sub>a</sub> surface finish.

### Dimensions

Model No.	A	B	C	D	E	F	G	H	J	K	L	M	N	P	Q	R	S	T	U	V	
<b>Single Acting (S/A)</b>																				<b>Cylinders, actuated hydraulically 1 direction, spring returned.</b>	
15-9104-00	#8	SAE 4	2.90	1.07	0.26	0.31	1.625	0.300	1.25	0.875	0.653	0.19	1.13	1.15	0.60	0.88	2.33	0.44	0.63	28	
15-9105-00	#10	SAE 6	3.14	1.26	0.26	0.38	1.625	0.280	1.50	1.063	0.782	0.22	1.25	1.27	0.70	0.98	2.50	0.49	0.75	31	
15-9108-00	1/4"	SAE 4	3.50	1.50	0.25	0.50	1.625	0.188	2.25	1.688	1.157	0.28	2.00	2.02	1.14	1.63	2.75	0.81	1.13	28	

