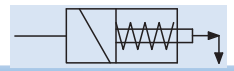


# Special Use Clamps



## Retract Clamp

### Single Acting

- Available in 1,700 and 3,300 lb. capacities.
- Extends straight forward, then down to contact your part.
- Replaceable spherical contact point (furnished) provides point contact for true vertical clamp force.
- Lifts vertically, then retracts, not like others which can draw the part when unclamping.



U.S. Patent Nos.  
5,979,886  
5,752,693

Patented design overcomes the shortcomings of other models.

Integral wiper helps keep chips and contaminants out of the mechanism.

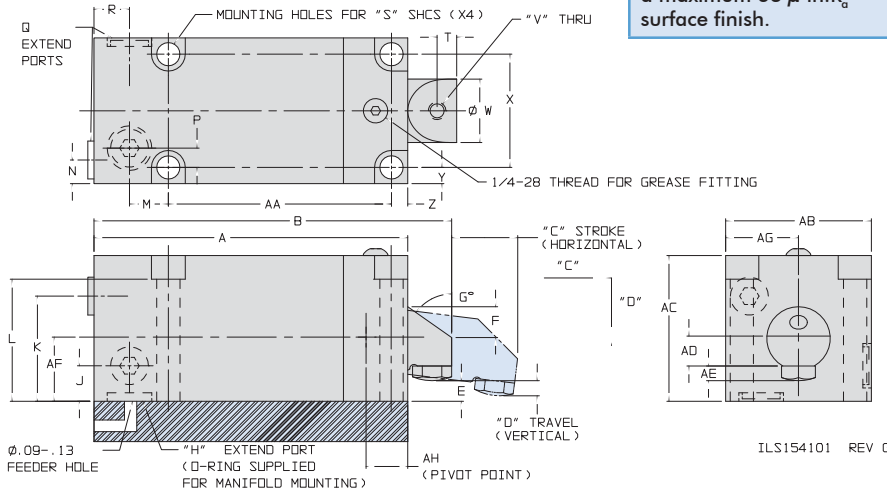
Manifold mounting port is built into each unit, making selection easy, no special models to order.

Rear and side porting are included for ease of plumbing in your application.

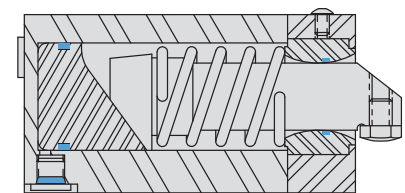
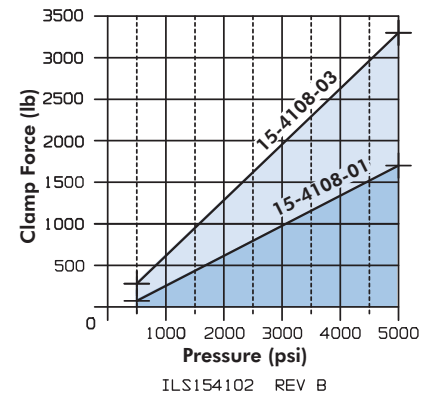
Model No.	Clamping Force (lb.)**	Horizontal Stroke (in.)	Clamping Travel (in.)	Oil Capacity Extend (cu. in.)
<b>Single Acting (S/A)</b>				
<b>Cylinders, actuated hydraulically 1 direction, spring return</b>				
15-4108-01	1700	0.74	0.12	1.1
15-4108-03	3300	0.88	0.16	2.1

**E-8**

\*\* Clamping force is rated at 5,000 psi Maximum Operating Pressure and the Maximum Backpressure to assure return is 10 psi.



For proper sealing, mating surface must be flat within 0.003 in. with a maximum 63 μ in. R<sub>a</sub> surface finish.



### Dimensions

Model No.	A	B	C	D	E	F	G	H	J	K	L	M	N	P	Q	
<b>Single Acting (S/A)</b>																
<b>Cylinders, actuated hydraulically 1 direction, spring return</b>																
15-4108-01	4.01	4.56	0.74	0.12	0.41	0.32	60°	SAE 2	0.35	1.89	1.99	0.95	0.37	0.21	SAE 4	
15-4108-03	5.14	5.78	0.88	0.16	0.53	0.36	60°	SAE 2	0.53	1.91	2.43	0.85	0.47	0.21	SAE 4	
Model No.	R	S	T	V	W	X	Y	Z	AA	AB	AC	AD	AE	AF	AG	AH
<b>Single Acting (S/A)</b>																
<b>Cylinders, actuated hydraulically 1 direction, spring return</b>																
15-4108-01	0.44	1/4"	0.26	1/4-20	0.687	1.70	0.27	0.24	2.36	2.25	2.25	0.30	0.20	0.90	1.13	0.371
15-4108-03	0.44	5/16"	0.29	5/16-18	0.938	2.02	0.37	0.24	3.30	2.75	2.75	0.52	0.22	1.15	1.38	0.465

