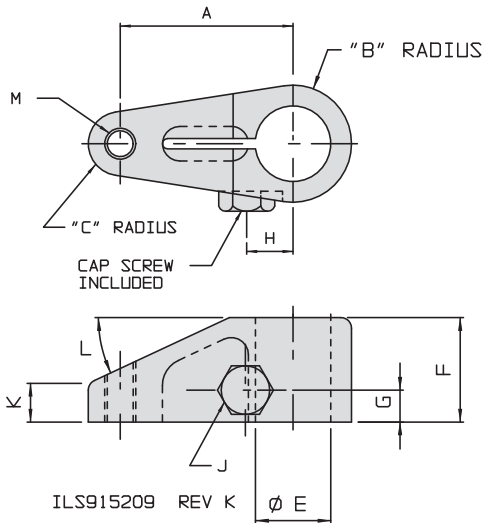


Swing Clamp Arms

TuffCam™ Low Profile Standard and Extended Length

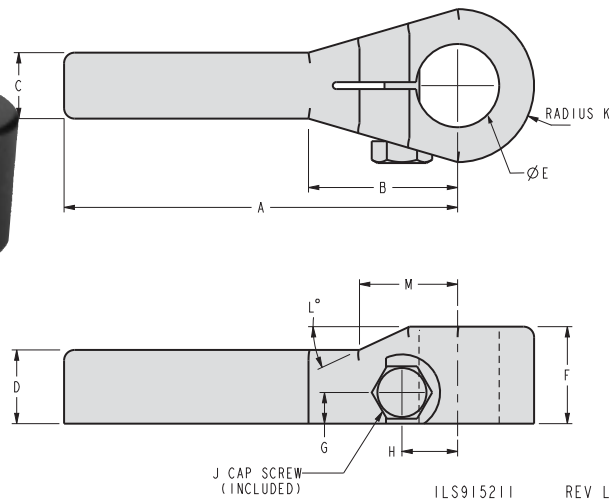


TuffCam™ Low Profile Standard Arm Dimensions

Model No.*	Cylinder Capacity	A	B	C	E	F	G	H	J	K	L	M
91-5218-12	5000	2.50	1.00	0.56	1.250/1.252	1.75	0.50	0.884	M16 x 1.50	0.63	25°	5/8-11
91-5221-11	7500	2.68	1.37	0.56	1.5005/1.5025	1.75	0.56	1.009	M16 x 1.50	0.65	25°	5/8-11

* Use 91-5218-12 use with the low profile swing clamps, models 14-2718-XX and 14-2818-XX only. For arm without tapped hole order model number 91-5218-11.
Use 91-5221-11 with low profile swing clamps model 14-0521-XX, 14-0621-XX, 14-2121-XX, and 14-2221-XX only. For arm without tapped hole order model number 91-5218-11 and 91-5221-06.

**NOTE: Replacement Cap Screw for 91-5218-12 and 91-5218-11 is model number 21-5000-24.
Replacement Cap Screw for 91-5221-11 and 91-5221-06 is model number 21-5000-28.**



NOTE: Please reference Clamp Times and Flow Rate charts on page C-18

TuffCam™ Low Profile Extended Arm Dimensions

Model No.*	Cylinder Capacity	A	B	C	D	E	F	G	H	J	K	L	M
91-5218-13	5000	6.50	2.80	1.13	0.75	1.2500/1.2520	1.75	0.50	0.88	M16 X 1.50	1.00	25	2.76
91-5221-07	7500	7.10	2.69	1.19	1.33	1.5005/1.5025	1.75	0.56	1.00	M16 x 1.50	1.38	25	1.77

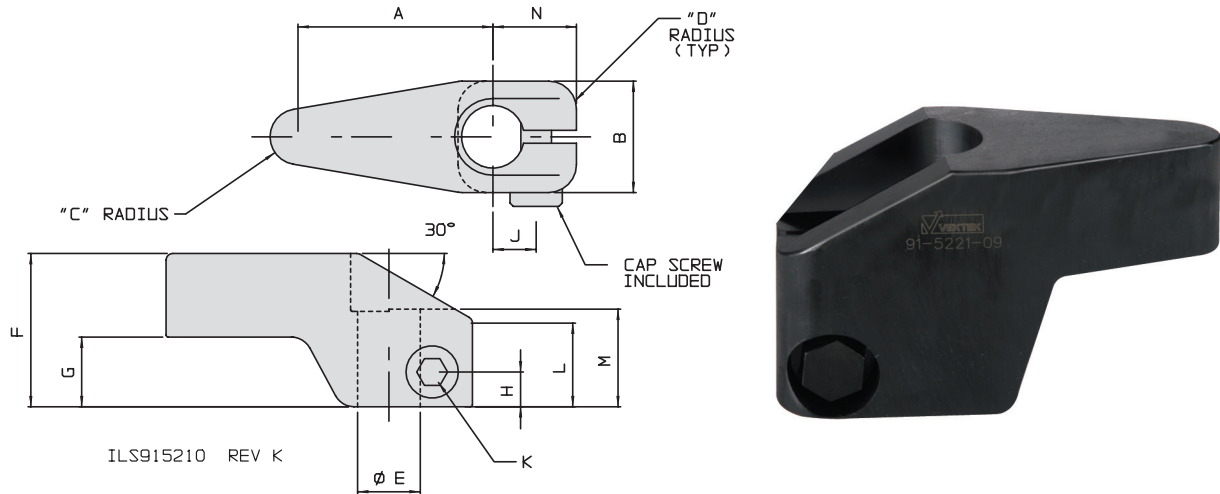
* Use 91-5218-13 with the low profile swing clamps, models 14-2718-XX and 14-2818-XX.
Use 91-5221-07 with low profile swing clamps model 14-0521-XX, 14-0621-XX, 14-2121-XX, and 14-2221-XX.

**NOTE: Replacement Cap Screw for 91-5218-13 is model number 21-5000-24.
Replacement Cap Screw for 91-5221-07 is model number 21-5000-28.**



Swing Clamp Arms

TuffCam™ Low Profile Upreach and Double Ended

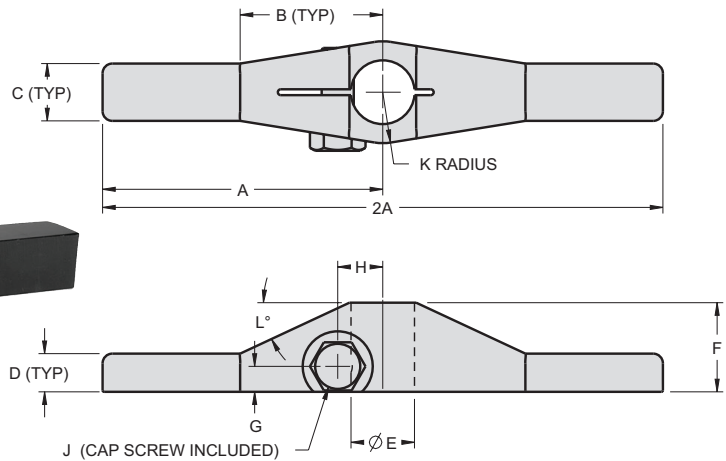


TuffCam™ Low Profile Upreach Arm Dimensions

Model No.*	Cylinder Capacity	A	B	C	D	E	F	G	H	J	K	L	M	N
91-5218-15	5000	3.00	2.00	0.56	0.56	1.250/1.252	2.75	1.44	0.53	0.884	M16 x 1.50	1.61	1.75	1.50
91-5221-09	7500	3.19	2.75	0.56	0.56	1.5005/1.5025	3.00	1.56	0.53	1.009	M16 x 1.50	1.77	1.75	1.62

* Use 91-5218-15 with the low profile swing clamps, models 14-2718-XX and 14-2818-XX only.
 Use 91-5221-09 with low profile swing clamps model 14-0521-XX, 14-0621-XX, 14-2121-XX, and 14-2221-XX only.

NOTE: Replacement Cap Screw for 91-5218-15 and 91-5221-09 is model number 21-5000-25.



TuffCam™ Low Profile Double Ended Arm Dimensions

Model No.	Cylinder Capacity	A	2A	B	C	D	E	F	G	H	J	K	L
91-5218-14*	5000	5.50	11.00	2.80	1.13	0.75	1.250/1.252	1.75	0.50	0.884	M16 X 1.50	0.63	25
91-5221-08**	7500	7.10	14.20	1.75	1.19	1.33	1.5005/1.5025	1.75	0.56	1.009	M16 X 1.50	0.65	25

* Use 91-5218-14 with the low profile swing clamps, models 14-2718-XX and 14-2818-XX only. For arm without tapped hole order Model Number 91-5218-11.

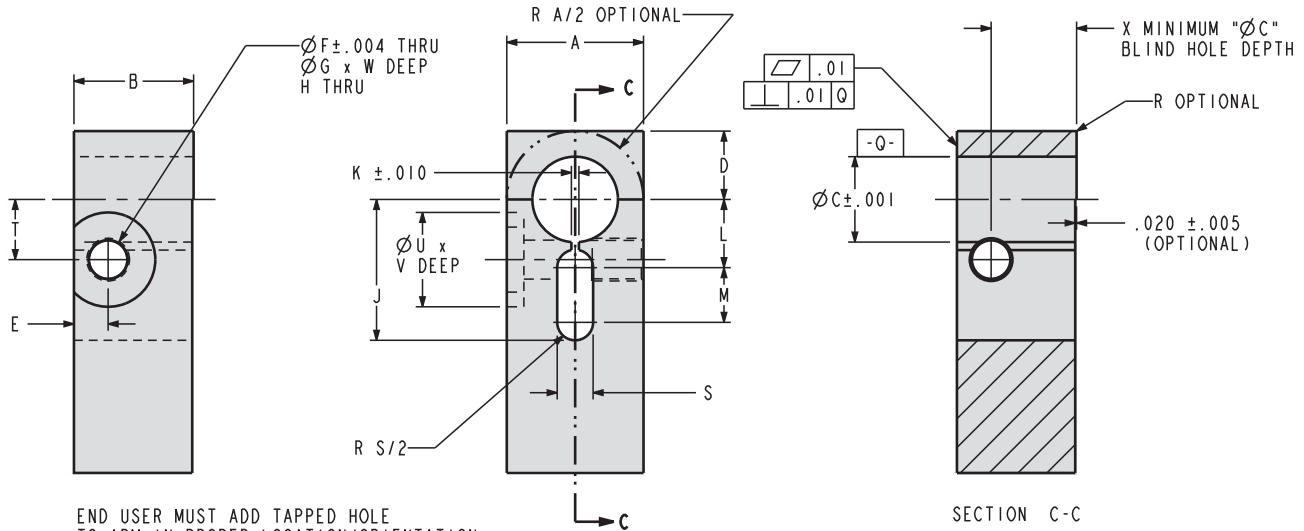
** Use 91-5221-08 with low profile swing clamps model 14-0521-XX, 14-0621-XX, 14-2121-XX, and 14-2221-XX only.

NOTE: Replacement Cap Screw for 91-5218-14 is model number 21-5000-24.
 Replacement Cap screw for 91-5221-08 is model number 21-5000-28.



Swing Clamp Arms

Customer Produced TuffCam™ Low Profile



END USER MUST ADD TAPPED HOLE TO ARM IN PROPER LOCATION/ORIENTATION FOR THEIR APPLICATION.

ILS915214 REV J

Self-produced Low Profile Arm Dimensions

Arm Series	Cylinder Capacity (lbs)	A	B	C	D	E	F	G	H	J	
Recommended Machining Dimensions for Self-produced Clamp Arm											
91-5218-12	5000	2.00	1.75	1.251	1.00	0.50	0.57	0.65	M16 x 1.50-6H	2.06	
91-5218-13											
91-5218-14											
91-5221-07	7500	2.75	1.75	1.5015	1.38	0.56	0.57	0.65	M16 x 1.50-6H	2.25	
91-5221-08											
91-5221-11											
Arm Series	Cylinder Capacity (lbs)	K	L	M	S	T	U	V	W	X S/A D/A	
Recommended Machining Dimensions for Self-produced Clamp Arm											
91-5218-12	5000	0.11	1.00	0.80	0.51	0.88	1.38	0.25	1.01	1.70	1.29
91-5218-13											
91-5218-14											
91-5221-07	7500	0.12	1.12	0.57	0.56	1.00	1.38	0.38	1.00	2.00	1.22
91-5221-08											
91-5221-11											

0-10

Hex head cap screw for standard, extended and double ended arms:

*Arm series 91-5218-12, 915218-13, 91-5218-14 is model number 21-5000-24.

*Arm series 91-5221-07, 91-5221-08, 91-5221-11 is model number 21-5000-28

NOTE: Please reference Clamp Times and Flow Rate charts on page C-18.

