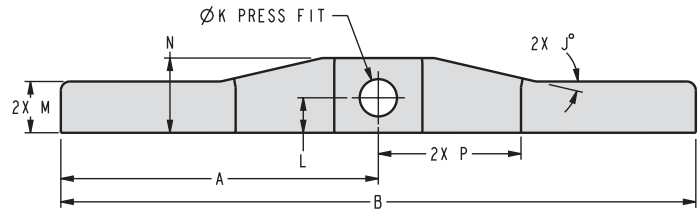
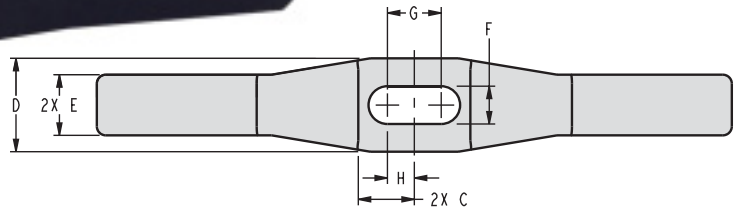


# Swing Clamp Arms

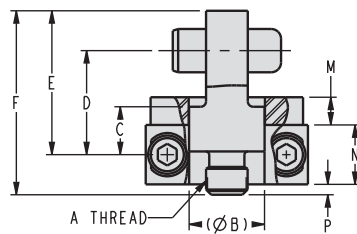
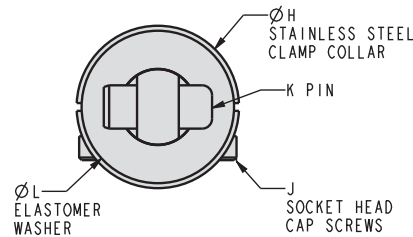
## Double Ended Rocker



### Double Ended Rocker Arm Dimensions

ILS915205 REV F

Model No.	Cylinder Capacity (lbs)	A	B	C	D	E	F	G	H	J	K	L	M	N	P
91-5205-09	450	2.13	4.25	0.38	0.63	0.41	0.25	0.36	0.18	13°	0.250	0.23	0.34	0.46	0.96
91-5209-09	1100	3.00	6.00	0.48	0.88	0.56	0.38	0.50	0.25	18°	0.312	0.38	0.50	0.75	1.27
91-5213-09	2600	4.25	8.50	0.73	1.25	0.75	0.53	0.70	0.35	25°	0.437	0.55	0.63	1.10	1.78
91-5218-09	5000	5.50	11.00	0.98	2.00	1.12	0.78	1.00	0.50	30°	0.624	0.87	0.75	1.75	2.86



ILS915206 REV F

### Rocker Arm Attachment Assembly Dimensions

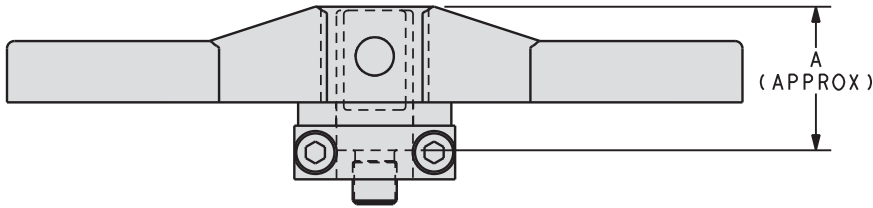
Model No.	Cylinder Capacity (lbs)	A	B	C	D	E	F	G	H	J	K	L	M	N	P
91-5205-08	450	1/4-28	0.437	0.26	0.58	0.81	1.06	0.243	0.94	6-32	Ø0.250 X 0.63	0.88	0.16	0.38	0.06
91-5209-08	1100	3/8-24	0.625	0.33	0.76	1.14	1.58	0.370	1.31	10-32	Ø0.313 X 0.88	1.25	0.19	0.44	0.22
91-5213-08	2600	1/2-20	0.875	0.30	1.05	1.59	2.09	0.524	1.63	1/4-28	Ø0.438 X 1.25	1.63	0.25	0.50	0.25
91-5218-08	5000	5/8-18	1.250	0.40	1.43	2.24	2.88	0.780	2.06	1/4-28	Ø0.625 X 2.00	2.00	0.25	0.50	0.37



# Swing Clamp Arms

## Double Ended Rocker Arm Assembly

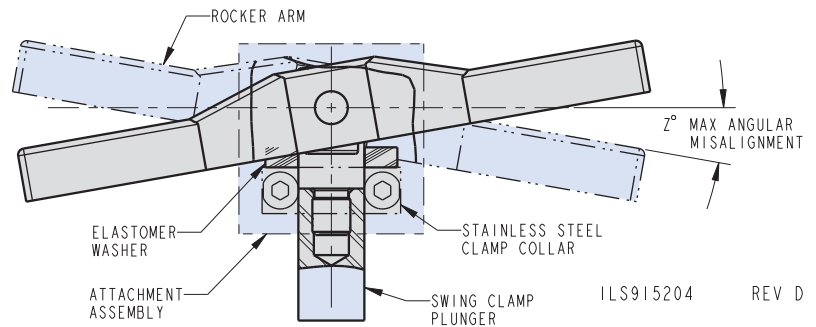
- To order the double ended rocker arms already assembled to the attachment, please use the numbers below, otherwise parts will be shipped separately.



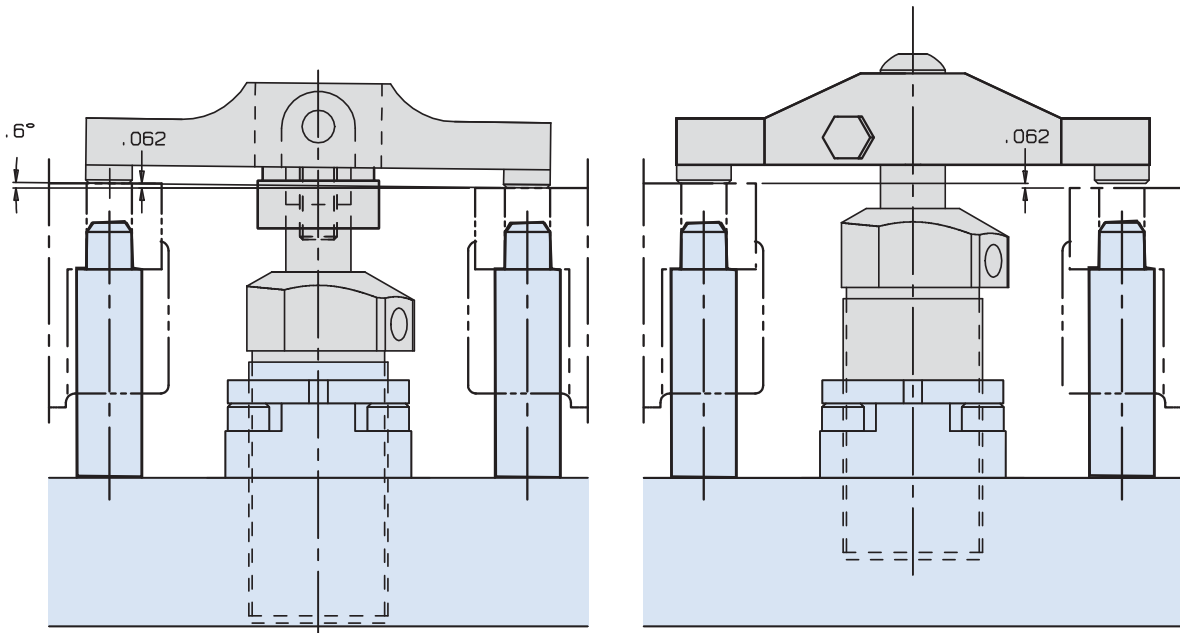
ILS915208 REV E

### Double Ended Rocker Arm Assembly Dimensions

Model No.	Z
91-5205-10	10
91-5209-10	6
91-5213-10	6
91-5218-10	5



ILS915204 REV D



The double ended rocker arm illustrated on the left will provide equal clamping force at both ends.

The fixed double ended arm on the right will transmit more force on the taller part.

Specifications on O-6