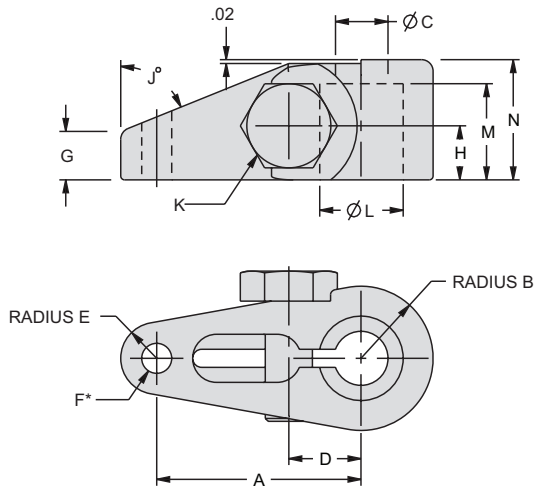


Swing Clamp Arms

Standard Length and Upreach



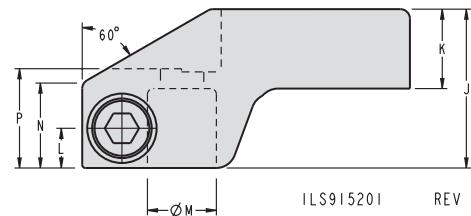
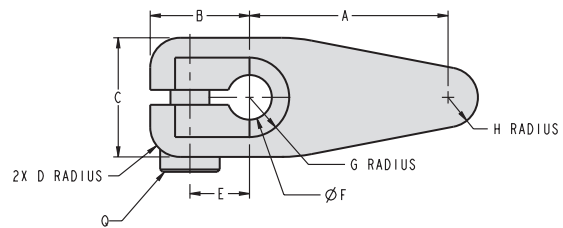
ILS915200 REV K



Standard Arm Dimensions

Model No.	Cylinder Capacity (lbs)	A	B	C	D	E	F*	G	H	J	K	L	M	N
91-5205-01	450	1.06	0.38	0.28	0.38	0.19	10-24	0.25	0.28	68	1/4-28	0.4380/0.4400	0.50	0.63
91-5209-01	1100	1.50	0.50	0.41	0.50	0.25	5/16-18	0.29	0.31	65	5/16-24	0.6255/0.6275	0.71	0.88
91-5213-01	2600	2.00	0.69	0.53	0.66	0.37	3/8-16	0.47	0.37	65	3/8-24	0.8755/0.8775	1.00	1.25
91-5218-01	5000	2.50	1.00	0.66	0.97	0.56	5/8-11	0.63	0.50	65	5/8-18	1.250/1.252	1.44	1.75
Arms without threaded holes														
91-5205-00	450	1.06	0.38	0.28	0.38	0.19	N/A	0.25	0.28	68	1/4-28	0.4380/0.4400	0.50	0.63
91-5209-00	1100	1.50	0.50	0.41	0.50	0.25	N/A	0.29	0.31	65	5/16-24	0.6255/0.6275	0.71	0.88
91-5213-00	2600	2.00	0.69	0.53	0.66	0.37	N/A	0.47	0.37	65	3/8-24	0.8755/0.8775	1.00	1.25
91-5218-00	5000	2.50	1.00	0.66	0.97	0.56	N/A	0.63	0.50	65	5/8-18	1.250/1.252	1.44	1.75

NOTE: See catalog section C for suggested location of drilled and tapped hole for Clocking.



ILS915201 REV G

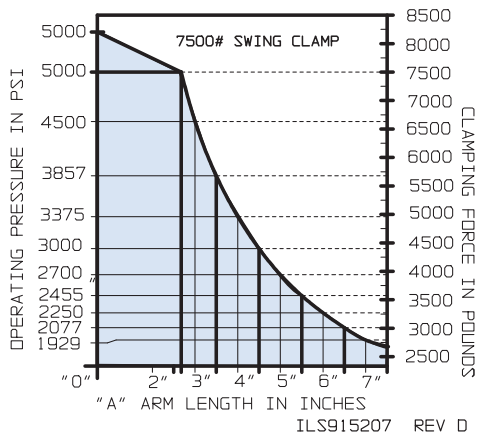
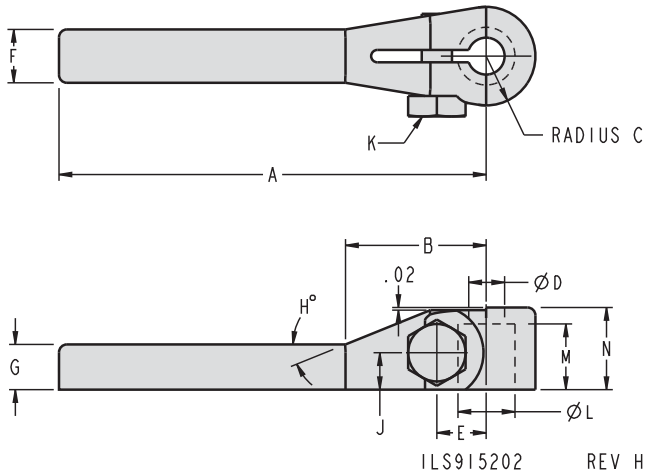
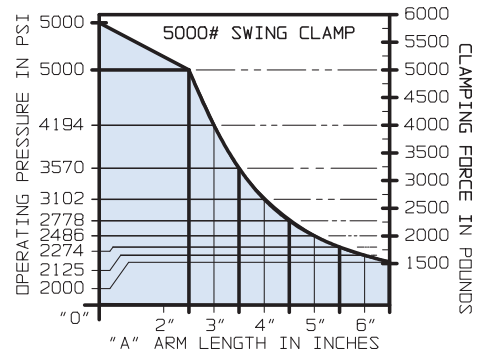
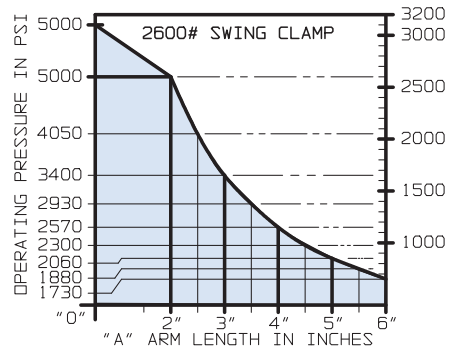
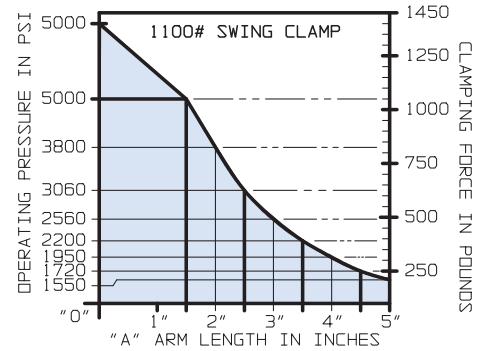
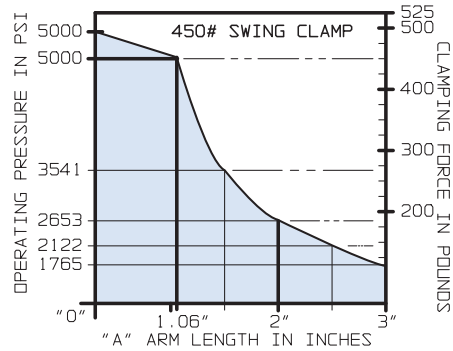
Upreach Arm Dimensions

Model No.	Cylinder Capacity (lbs)	A	B	C	D	E	F	G	H	J	K	L	M	N	P	Q
91-5205-06	450	1.25	0.63	0.75	0.19	0.38	0.28	0.25	0.19	1.00	0.50	0.25	0.4380/0.4400	0.54	0.63	1/4-28
91-5209-06	1100	1.75	0.75	1.00	0.25	0.50	0.41	0.34	0.25	1.38	0.66	0.32	0.6255/0.6275	0.79	0.88	5/16-24
91-5213-06	2600	2.50	1.03	1.38	0.38	0.66	0.53	0.50	0.38	2.00	1.00	0.44	0.8755/0.8775	1.18	1.25	3/8-24
91-5218-06	5000	3.00	1.50	2.00	0.56	0.97	0.66	0.63	0.56	2.75	1.31	0.53	1.250/1.252	1.61	1.75	5/8-18



Swing Clamp Arms

Extended, Arm Length and Pressure Limitations



Arm lengths and pressures operating at or below the curves shown are in the safe operating zones for the clamp model indicated.

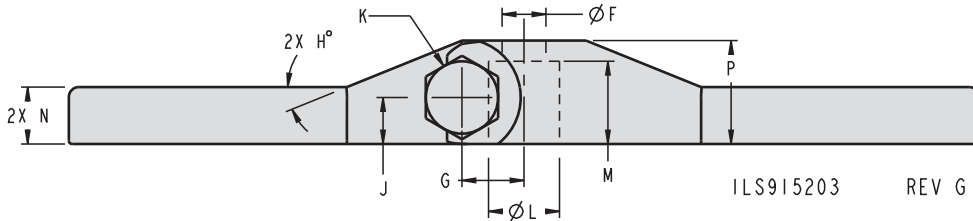
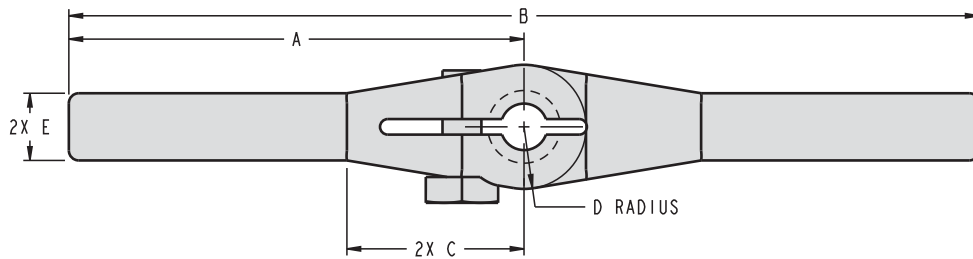
NOTE: Please reference **Clamp Times** and **Flow and C-2** for **TuffCam™** or **C-26** for **Standard Swing Clamps**.

Extended Arm Dimensions

Model No.	Cylinder Capacity (lbs)	A	B	C	D	E	F	G	H	J	K	L	M	N
91-5205-02	450	3.25	1.07	0.38	0.28	0.38	0.41	0.34	22°	0.28	1/4-28	0.4380/0.4400	0.50	0.63
91-5209-02	1100	5.37	1.32	0.50	0.41	0.50	0.56	0.50	25°	0.31	5/16-24	0.6255/0.6275	0.71	0.88
91-5213-02	2600	6.37	2.03	0.69	0.53	0.66	0.75	0.63	25°	0.37	3/8-24	0.8755/0.8775	1.00	1.25
91-5218-02	5000	6.50	2.80	1.00	0.66	0.97	1.13	0.75	25°	0.50	5/8-18	1.250/1.252	1.44	1.75

Swing Clamp Arms

Double Ended



ILS915203 REV G

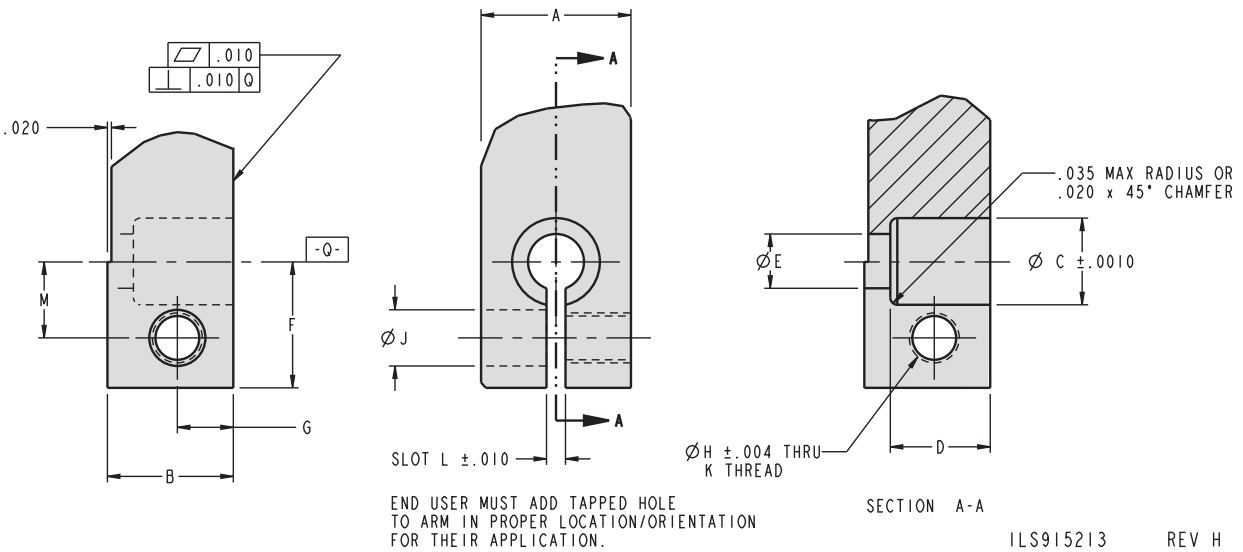
Double Ended Dimensions

Model No.	Cylinder Capacity (lbs)	A	B	C	D	E	F	G	H	J	K	L	M	N	P
91-5205-07	450	2.75	5.50	1.07	0.38	0.41	0.28	0.38	22	0.28	1/4-28	0.4380/0.4400	0.50	0.34	0.63
91-5209-07	1100	4.37	8.75	1.32	0.50	0.56	0.41	0.50	25	0.31	5/16-24	0.6255/0.6275	0.71	0.50	0.88
91-5213-07	2600	5.37	10.75	2.03	0.69	0.75	0.53	0.66	25	0.37	3/8-24	0.8755/0.8775	1.00	0.63	1.25
91-5218-07	5000	5.50	11.00	2.80	1.00	1.13	0.66	0.97	25	0.50	5/8-18	1.250/1.252	1.44	0.75	1.75

0-4

Swing Clamp Arms

Customer-Produced



Self-produced Arm Dimensions for Standard and TuffCam™ Cylinders

Arm Series	Cylinder Capacity (lbs)	A	B	C	D	E	F	G	H	J	K	L	M
Recommended Machining Dimensions for Self-produced Clamp Arms													
91-5205-01	450	0.75	0.63	0.439	0.50	0.28	0.63	0.28	0.219	0.281	1/4-28 UNF 28	0.095	0.38
91-5205-02													
91-5205-06													
91-5205-07													
91-5209-01	1100	1.00	0.88	0.626	0.71	0.41	0.75	0.31	0.272	0.332	5/16-24 UNF 28	0.114	0.50
91-5209-02													
91-5209-06													
91-5209-07	2600	1.38	1.25	0.876	1.00	0.53	1.03	0.37	0.332	0.391	3/8-24 UNF 28	0.114	0.66
91-5213-01													
91-5213-02													
91-5213-06													
91-5213-07	5000	2.00	1.75	1.251	1.44	0.66	1.50	0.56	0.578	0.641	5/8-18 UNF 28	0.114	0.97
91-5218-01													
91-5218-02													
91-5218-06													
91-5218-07													

NOTE: Please reference Clamp Times and Flow Rate charts on page C-2 for TuffCam™ or C-26 for Standard Swing Clamps.

