

Accessory Valves

Pneumatic Confirmation Valve, Block

Confirm Clamp Stroke Position Pneumatically

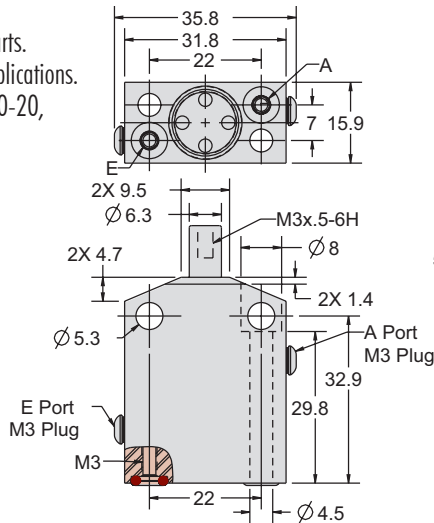
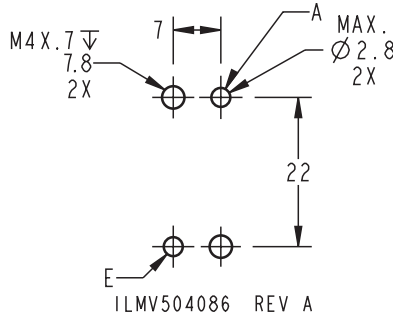
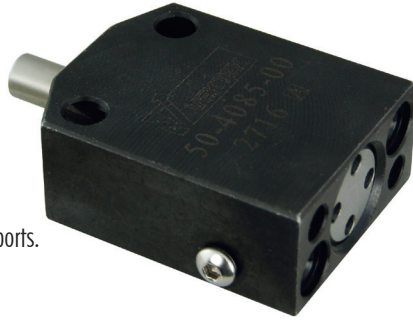
The pneumatic confirmation valve confirms the stage of loading before or after clamping. It is adaptable to multiple devices including: Swing clamps, link clamps, cylinders and work supports.

Avoid machine crashes by confirming specific actions before you cycle your machine. It is designed to be used in both coolant and dry environments, and is easily mounted either vertically or horizontally. Confirmation at its finest!

- Easily fine tune to your fixture giving you a choice of set and differential pressure.
- Confirm signal is based on restricting air flow when tested function is present.
- Over-travel sensing will reopen if a device depresses plunger too far on over travel models.
- Pneumatic Confirmation Valve can be used with almost any clamping device.
- Can help you detect missing or misloaded parts.
- Remote venting recommended in coolant applications.
- 1/8 Tube - M3 Connector - Part No. P3-0370-20, (Order Separately).

NOTE: Mounting hardware not included.

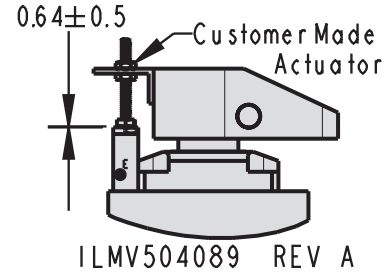
For proper sealing, the mating surface must be flat within 0.08 mm with a maximum surface roughness of 1.6 μm R_a .



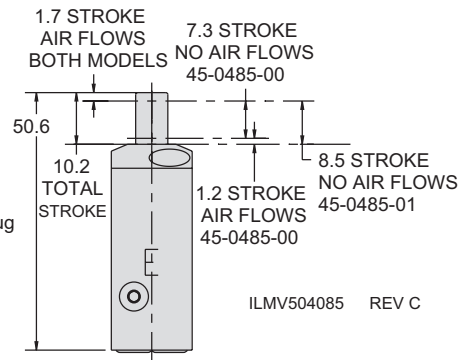
Application Setup:

Adjust actuator .64 ± 0.5 above valve body with clamp positioned at the bottom of clamping stroke.

This will avoid valve and actuator damage if clamp over travels!



NOTE: MOUNTING HARDWARE NOT INCLUDED
E = INPUT
A = OUTPUT (VENT TO ATMOSPHERE)

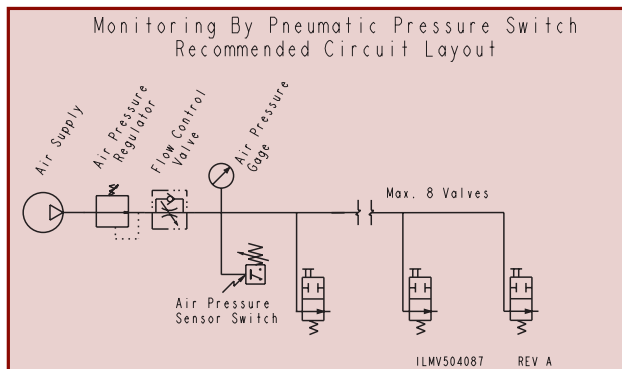


M-15

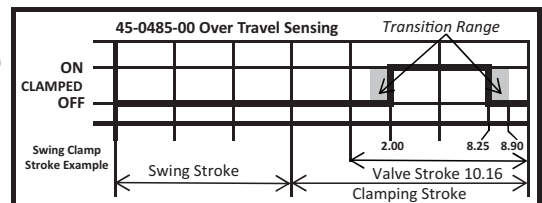
Pneumatic Confirmation Valve

Model No.	Description	Max Air Pressure (bar)	Operating Pressure Range (bar)	Air Flow Rate (L/Min)	Differential Pressure* @ 1.4 Bar Air Pressure	Differential Pressure* @ 4.8 Bar Air Pressure	Plunger Stroke (Nm)	Spring Force (N)	Feed Port Nominal Diameter (mm)	Port Types
45-0485-00	Over-Travel Sensing	10	0.70-4.80	10-20	Min. 0.8	Min. 3.1	10 Max	6.6-13.3	2	Manifold and M3
45-0485-01	Standard	10	0.70-4.80	10-20	Min. 0.8	Min. 3.1	10 Max	6.6-13.3	2	Manifold and M3

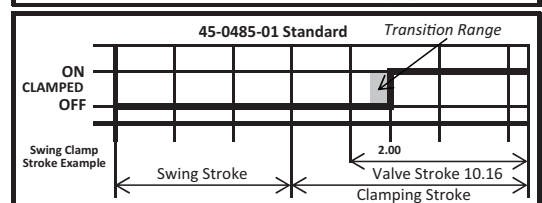
* Pressure drop when one or more valves are open. All valves must be closed for pressure confirmation. Plumb multiple valves in parallel.



45-0485-00 Over Travel Sensing Logic

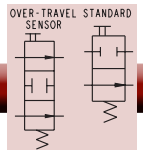


45-0485-01 Standard Logic

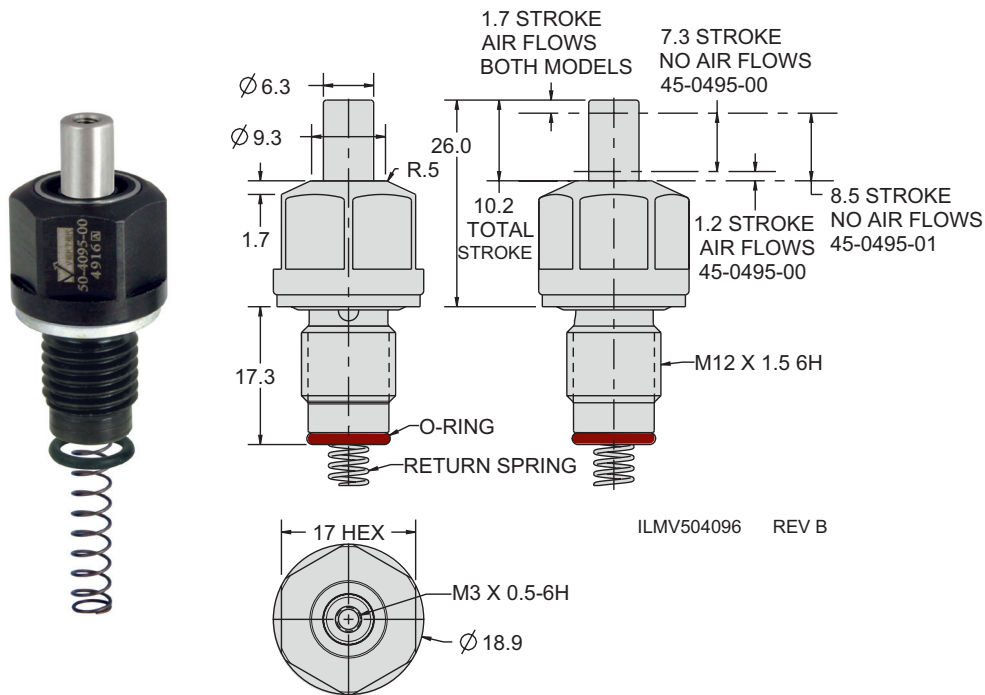


ILMV50408 REV A

Accessory Valves



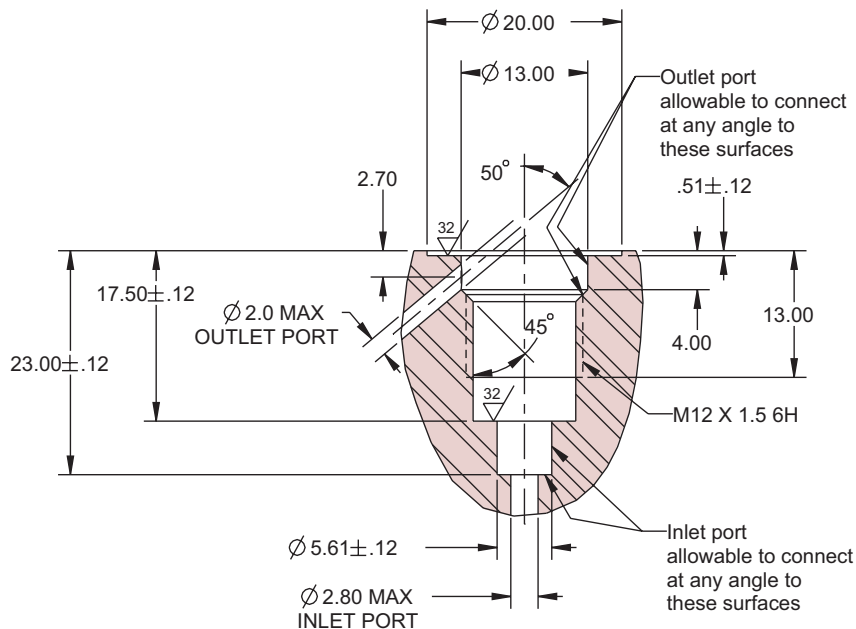
Pneumatic Confirmation Valve, Cartridge



Pneumatic Confirmation Valve Cartridge

Model No.	Description	Max Air Pressure (bar)	Operating Pressure Range (bar)	Air Flow Rate (L/Min)	Differential Pressure*		Plunger Stroke (mm)	Spring Force (N)	Nominal Diameter (mm)	Max Torque (Nm)
					@1.4 Bar Air Pressure	@4.8 Bar Air Pressure				
45-0495-00	Over-Travel Sensing	10	.7-4.8	10-20	Min. .82	Min. 3.10	10	6.6-13.3	2	25
45-0495-01	Standard	10	.7-4.8	10-20	Min. .82	Min. 3.10	10	6.6-13.3	2	25

* Pressure drop when one or more valves are open. All valves must be closed for pressure confirmation. Plumb multiple valves in parallel.



M-16